

**KD-Validated Anti-Superoxide Dismutase 2 Mouse Monoclonal Antibody**  
**Mouse monoclonal antibody**  
**Catalog # AGI1791****Specification****KD-Validated Anti-Superoxide Dismutase 2 Mouse Monoclonal Antibody - Product Information**

Application	WB
Primary Accession	<a href="#">P04179</a>
Reactivity	Rat, Human, Mouse
Clonality	Monoclonal
Isotype	Mouse IgG1 kappa
Calculated MW	Predicted, 25 kDa, observed, 22 kDa kDa
Gene Name	SOD2
Aliases	SOD2; Superoxide Dismutase 2; GCInc1; MnSOD; IPOB; GC1; Superoxide Dismutase [Mn], Mitochondrial; Superoxide Dismutase 2, Mitochondrial; EC 1.15.1.1; Epididymis Secretory Sperm Binding Protein; Manganese-Containing Superoxide Dismutase; Gastric Cancer-Associated LncRNA 1; Gastric Cancer-Associated LncRNA 1; Manganese Superoxide Dismutase; Mangano-Superoxide Dismutase; Mn Superoxide Dismutase; Indophenoloxidase B; Mn-SOD; IPO-B; MVCD6
Immunogen	Recombinant protein of human SOD2

**KD-Validated Anti-Superoxide Dismutase 2 Mouse Monoclonal Antibody - Additional Information**

Gene ID	6648
<b>Other Names</b>	
Superoxide dismutase [Mn], mitochondrial, 1.15.1.1, SOD2	

**KD-Validated Anti-Superoxide Dismutase 2 Mouse Monoclonal Antibody - Protein Information****Name** SOD2**Function**

Destroys superoxide anion radicals which are normally produced within the cells and which are toxic to biological systems.

**Cellular Location**

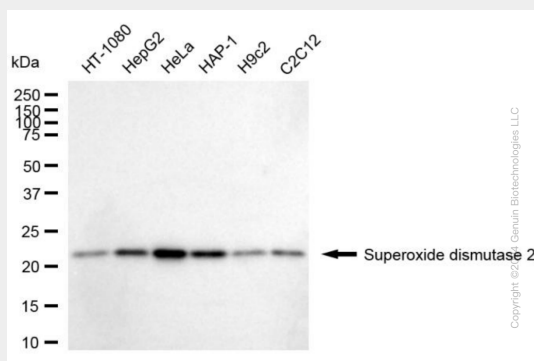
Mitochondrion matrix.

## KD-Validated Anti-Superoxide Dismutase 2 Mouse Monoclonal Antibody - Protocols

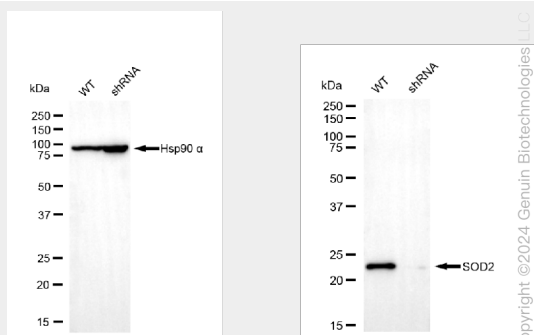
Provided below are standard protocols that you may find useful for product applications.

- [Western Blot](#)
- [Blocking Peptides](#)
- [Dot Blot](#)
- [Immunohistochemistry](#)
- [Immunofluorescence](#)
- [Immunoprecipitation](#)
- [Flow Cytometry](#)
- [Cell Culture](#)

## KD-Validated Anti-Superoxide Dismutase 2 Mouse Monoclonal Antibody - Images



Western blotting analysis using anti-Superoxide dismutase 2 antibody (Cat#62883). Total cell lysates (30 µg) from various cell lines were loaded and separated by SDS-PAGE. The blot was incubated with anti-Superoxide dismutase 2 antibody (Cat#62883, 1:5,000) and HRP-conjugated goat anti-mouse secondary antibody (Cat#101, 1:20,000) respectively. Image was developed using FeQ™ ECL Substrate Kit (Cat#226).



Western blotting analysis using anti-superoxide dismutase 2 antibody (Cat#62883). Superoxide dismutase 2 expression in wild-type (WT) and superoxide dismutase 2 (SOD2) shRNA knockdown (KD) HeLa cells with 20 µg of total cell lysates. Hsp90 α serves as a loading control. The blot was incubated with anti-superoxide dismutase 2 antibody (Cat#62883, 1:5,000) and HRP-conjugated goat anti-mouse secondary antibody (Cat#101, 1:20,000) respectively. Image was developed using NaQ™ ECL Substrate Kit (Cat#716).