

**KD-Validated Anti-Cyclin B1 Rabbit Monoclonal Antibody**  
**Rabbit monoclonal antibody**  
**Catalog # AGI1805****Specification**

---

**KD-Validated Anti-Cyclin B1 Rabbit Monoclonal Antibody - Product Information**

|                   |  |
|-------------------|--|
| Application       | WB, FC, ICC  |
| Primary Accession | <a href="#">P14635</a>   |
| Reactivity        | Rat, Human, Mouse  |
| Clonality         | Monoclonal   |
| Isotype           | Rabbit IgG   |
| Calculated MW     | Predicted, 48 kDa, observed, 55 kDa kDa  |
| Gene Name         | CCNB1  |
| Aliases           | CCNB1; Cyclin B1; CCNB;<br>G2/Mitotic-Specific Cyclin-B1;<br>G2/Mitotic-Specific Cyclin B1 |
| Immunogen         | Recombinant protein of mouse Cyclin B1<br>(UniProt Entry: P24860)                          |

**KD-Validated Anti-Cyclin B1 Rabbit Monoclonal Antibody - Additional Information**

|  |     |
|--|-----|
| Gene ID                                    | 891 |
| <b>Other Names</b>                         |     |
| G2/mitotic-specific cyclin-B1, CCNB1, CCNB |     |

**KD-Validated Anti-Cyclin B1 Rabbit Monoclonal Antibody - Protein Information****Name** CCNB1**Synonyms** CCNB**Function**

Essential for the control of the cell cycle at the G2/M (mitosis) transition.

**Cellular Location**

Cytoplasm. Nucleus. Cytoplasm, cytoskeleton, microtubule organizing center, centrosome

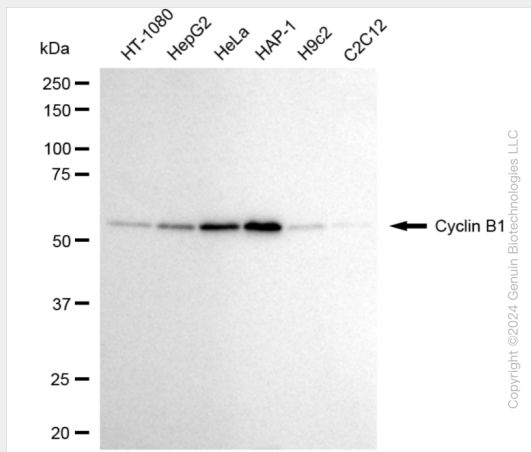
**KD-Validated Anti-Cyclin B1 Rabbit Monoclonal Antibody - Protocols**

Provided below are standard protocols that you may find useful for product applications.

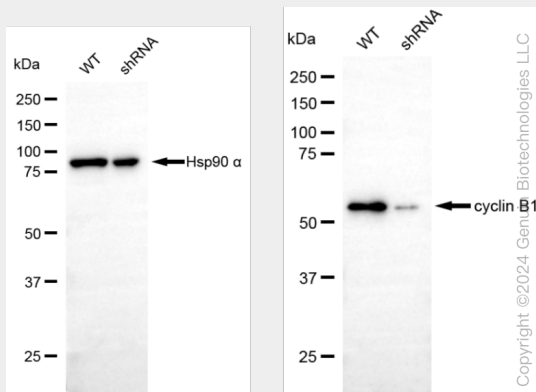
- [Western Blot](#)
- [Blocking Peptides](#)
- [Dot Blot](#)
- [Immunohistochemistry](#)
- [Immunofluorescence](#)

- [Immunoprecipitation](#)
- [Flow Cytometry](#)
- [Cell Culture](#)

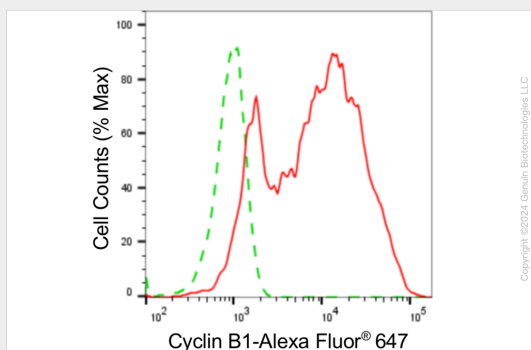
## KD-Validated Anti-Cyclin B1 Rabbit Monoclonal Antibody - Images



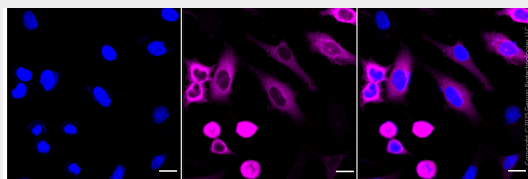
Western blotting analysis using anti-cyclin B1 antibody (Cat#AGI1805). Total cell lysates (30 µg) from various cell lines were loaded and separated by SDS-PAGE. The blot was incubated with anti-cyclin B1 antibody (Cat#AGI1805, 1:5,000) and HRP-conjugated goat anti-rabbit secondary antibody respectively.



Western blotting analysis using anti-cyclin B1 antibody (Cat#AGI1805). Cyclin B1 expression in wild-type (WT) and cyclin B1 (CCNB1) shRNA knockdown (KD) HT-1080 cells with 20 µg of total cell lysates. Hsp90 α serves as a loading control. The blot was incubated with anti-cyclin B1 antibody (Cat#AGI1805, 1:5,000) and HRP-conjugated goat anti-rabbit secondary antibody respectively.



Flow cytometric analysis of Cyclin B1 expression in HeLa cells using anti-Cyclin B1 antibody (Cat#AGI1805, 1:2,000). Green, isotype control; red, Cyclin B1.



Immunocytochemical staining of HeLa cells with cyclin B1 antibody (Cat#AGI1805, 1:1,000). Nuclei were stained blue with DAPI; Cyclin B1 was stained magenta with Alexa Fluor® 647. Images were taken using Leica stellaris 5. Protein abundance based on laser Intensity and smart gain: High. Scale bar: 20  $\mu$ m.