

**KD-Validated Anti-GATA binding protein 3 Rabbit Monoclonal Antibody**  
**Rabbit monoclonal antibody**  
**Catalog # AGI1810****Specification**

---

**KD-Validated Anti-GATA binding protein 3 Rabbit Monoclonal Antibody - Product Information**

Application	WB
Primary Accession	<a href="#">P23771</a>
Reactivity	Rat, Human, Mouse
Clonality	Monoclonal
Isotype	Rabbit IgG
Calculated MW	Predicted, 48 kDa, observed, 40 kDa
Gene Name	KDa
Aliases	GATA3 GATA3; GATA Binding Protein 3; HDR; Trans-Acting T-Cell-Specific Transcription Factor GATA-3; GATA-Binding Factor 3; GATA-Binding Protein 3; HDRS
Immunogen	A synthesized peptide derived from human GATA3

**KD-Validated Anti-GATA binding protein 3 Rabbit Monoclonal Antibody - Additional Information**

Gene ID	2625
<b>Other Names</b>	
Trans-acting T-cell-specific transcription factor GATA-3, GATA-binding factor 3, GATA3	

**KD-Validated Anti-GATA binding protein 3 Rabbit Monoclonal Antibody - Protein Information****Name** GATA3**Function**

Transcriptional activator which binds to the enhancer of the T-cell receptor alpha and delta genes. Binds to the consensus sequence 5'-AGATAG-3'. Required for the T-helper 2 (Th2) differentiation process following immune and inflammatory responses. Positively regulates ASB2 expression (By similarity). Coordinates macrophage transcriptional activation and UCP2-dependent metabolic reprogramming in response to IL33. Upon tissue injury, acts downstream of IL33 signaling to drive differentiation of inflammation-resolving alternatively activated macrophages.

**Cellular Location**

Nucleus.

**Tissue Location**

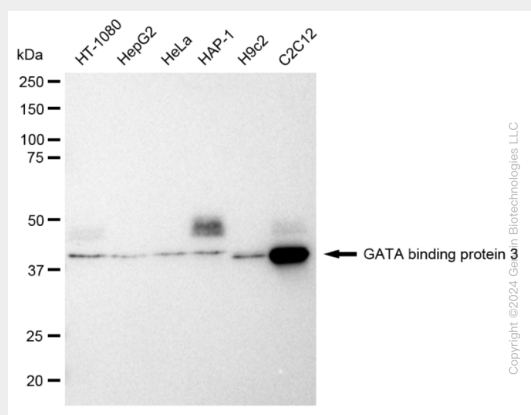
T-cells and endothelial cells.

## KD-Validated Anti-GATA binding protein 3 Rabbit Monoclonal Antibody - Protocols

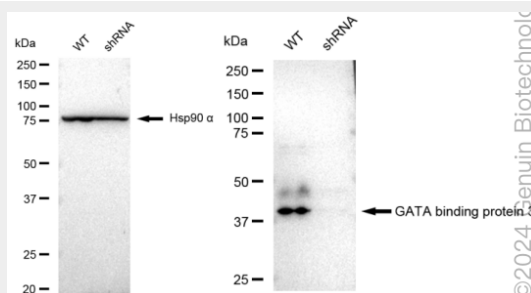
Provided below are standard protocols that you may find useful for product applications.

- [Western Blot](#)
- [Blocking Peptides](#)
- [Dot Blot](#)
- [Immunohistochemistry](#)
- [Immunofluorescence](#)
- [Immunoprecipitation](#)
- [Flow Cytometry](#)
- [Cell Culture](#)

## KD-Validated Anti-GATA binding protein 3 Rabbit Monoclonal Antibody - Images



Western blotting analysis using anti-GATA binding protein 3 antibody (Cat#AGI1810). Total cell lysates (30 µg) from various cell lines were loaded and separated by SDS-PAGE. The blot was incubated with anti-GATA binding protein 3 antibody (Cat#AGI1810, 1:5,000) and HRP-conjugated goat anti-rabbit secondary antibody respectively.



Western blotting analysis using anti-GATA binding protein 3 antibody (Cat#AGI1810). GATA binding protein 3 expression in wild type (WT) and GATA binding protein 3 shRNA knockdown (KD) HeLa cells with 30 µg of total cell lysates. Hsp90 α serves as a loading control. The blot was incubated with anti-GATA binding protein 3 antibody (Cat#AGI1810, 1:5,000) and HRP-conjugated goat anti-rabbit secondary antibody respectively.