

KD-Validated Anti-EIF4EBP1 Rabbit Monoclonal Antibody
Rabbit monoclonal antibody
Catalog # AGI1816**Specification****KD-Validated Anti-EIF4EBP1 Rabbit Monoclonal Antibody - Product Information**

Application	WB, FC, ICC
Primary Accession	Q13541
Reactivity	Rat, Human, Mouse
Clonality	Monoclonal
Isotype	Rabbit IgG
Calculated MW	Predicted, 13 kDa, observed, 15-20 kDa
Gene Name	KDa
Aliases	EIF4EBP1 EIF4EBP1; Eukaryotic Translation Initiation Factor 4E Binding Protein 1; PHAS-I ; 4E-BP1; Phosphorylated Heat- And Acid-Stable Protein Regulated By Insulin 1; Eukaryotic Translation Initiation Factor 4E-Binding Protein 1; EIF4E-Binding Protein 1; 4EBP1; BP-1
Immunogen	A synthesized peptide derived from human eIF4EBP1

KD-Validated Anti-EIF4EBP1 Rabbit Monoclonal Antibody - Additional Information

Gene ID	1978
Other Names	
Eukaryotic translation initiation factor 4E-binding protein 1, 4E-BP1, eIF4E-binding protein 1, Phosphorylated heat- and acid-stable protein regulated by insulin 1, PHAS-I, EIF4EBP1	

KD-Validated Anti-EIF4EBP1 Rabbit Monoclonal Antibody - Protein Information**Name** EIF4EBP1**Function**

Repressor of translation initiation that regulates EIF4E activity by preventing its assembly into the eIF4F complex: hypophosphorylated form competes with EIF4G1/EIF4G3 and strongly binds to EIF4E, leading to repress translation. In contrast, hyperphosphorylated form dissociates from EIF4E, allowing interaction between EIF4G1/EIF4G3 and EIF4E, leading to initiation of translation. Mediates the regulation of protein translation by hormones, growth factors and other stimuli that signal through the MAP kinase and mTORC1 pathways.

Cellular Location

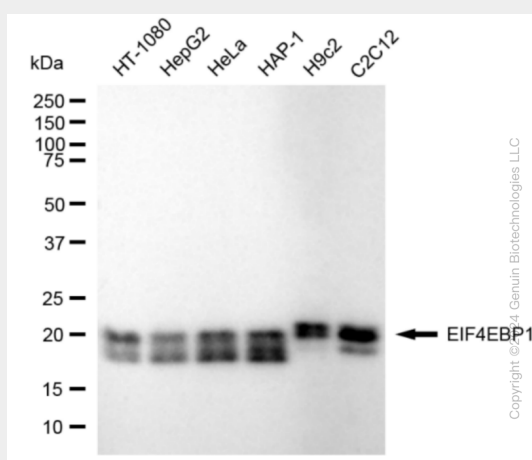
Cytoplasm. Nucleus. Note=Localization to the nucleus is unaffected by phosphorylation status. {ECO:0000250|UniProtKB:Q60876}

KD-Validated Anti-EIF4EBP1 Rabbit Monoclonal Antibody - Protocols

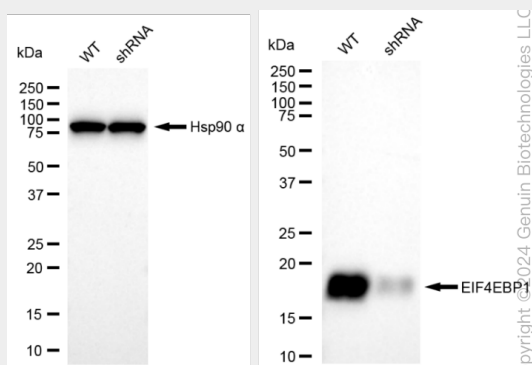
Provided below are standard protocols that you may find useful for product applications.

- [Western Blot](#)
- [Blocking Peptides](#)
- [Dot Blot](#)
- [Immunohistochemistry](#)
- [Immunofluorescence](#)
- [Immunoprecipitation](#)
- [Flow Cytometry](#)
- [Cell Culture](#)

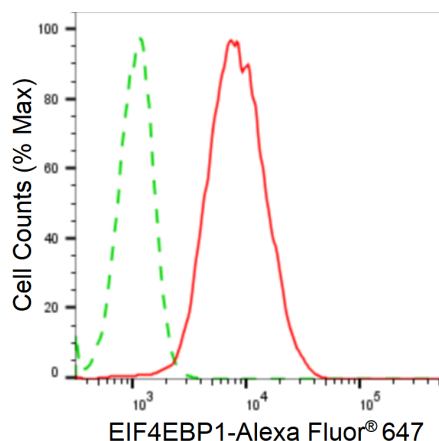
KD-Validated Anti-EIF4EBP1 Rabbit Monoclonal Antibody - Images



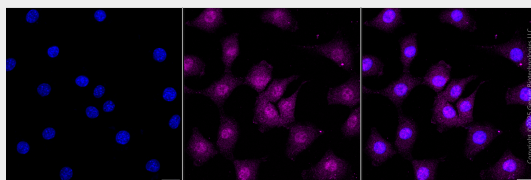
Western blotting analysis using anti-EIF4EBP1 antibody (Cat#AGI1816). Total cell lysates (30 µg) from various cell lines were loaded and separated by SDS-PAGE. The blot was incubated with anti-EIF4EBP1 antibody (Cat#AGI1816, 1:5,000) and HRP-conjugated goat anti-rabbit secondary antibody respectively.



Western blotting analysis using anti-EIF4EBP1 antibody (Cat#AGI1816). EIF4EBP1 expression in wild-type (WT) and EIF4EBP1 shRNA knockdown (KD) HeLa cells with 20 µg of total cell lysates. β-Tubulin serves as a loading control. The blot was incubated with anti-EIF4EBP1 antibody (Cat#AGI1816, 1:5,000) and HRP-conjugated goat anti-rabbit secondary antibody respectively.



Flow cytometric analysis of EIF4EBP1 expression in C2C12 cells using anti-EIF4EBP1 antibody (Cat#AGI1816, 1:2,000). Green, isotype control; red, EIF4EBP1.



Immunocytochemical staining of C2C12 cells with anti-EIF4EBP1 antibody (Cat#AGI1816, 1:1,000). Nuclei were stained blue with DAPI; EIF4EBP1 was stained magenta with Alexa Fluor® 647. Images were taken using Leica stellaris 5. Protein abundance based on laser Intensity and Smart Gain: Medium. Scale bar, 20 µm.