

KD-Validated Anti-Cyclin E2 Rabbit Monoclonal Antibody
Rabbit monoclonal antibody
Catalog # AGI1855**Specification**

KD-Validated Anti-Cyclin E2 Rabbit Monoclonal Antibody - Product Information

Application	WB, ICC
Primary Accession	O96020
Reactivity	Human
Clonality	Monoclonal
Isotype	Rabbit IgG
Calculated MW	Predicted, 47 kDa, observed, 47 kDa kDa
Gene Name	CCNE2
Aliases	CCNE2; Cyclin E2; CYCE2; G1/S-Specific Cyclin-E2
Immunogen	A synthesized peptide derived from human Cyclin E2

KD-Validated Anti-Cyclin E2 Rabbit Monoclonal Antibody - Additional Information

Gene ID	9134
Other Names	
G1/S-specific cyclin-E2, CCNE2	

KD-Validated Anti-Cyclin E2 Rabbit Monoclonal Antibody - Protein Information**Name** CCNE2**Function**

Essential for the control of the cell cycle at the late G1 and early S phase.

Cellular Location

Nucleus.

Tissue Location

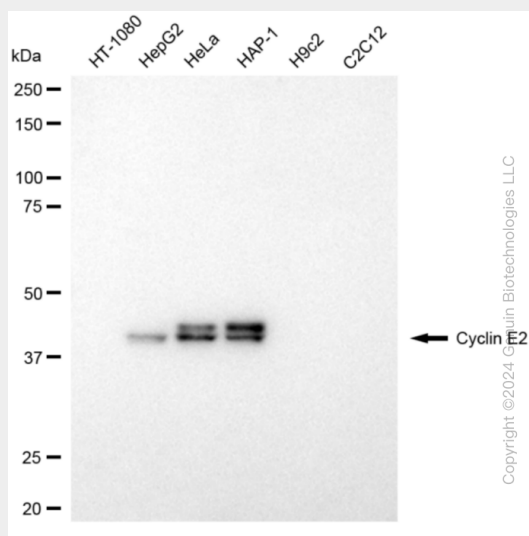
According to PubMed:9858585, highest levels of expression in adult testis, thymus and brain. Lower levels in placenta, spleen and colon. Consistently elevated levels in tumor-derived cells compared to non-transformed proliferating cells. According to PubMed:9840927: low levels in thymus, prostate, brain, skeletal muscle, and kidney. Elevated levels in lung. According to PubMed:9840943 highly expressed in testis, placenta, thymus and brain. In a lesser extent in small intestine and colon.

KD-Validated Anti-Cyclin E2 Rabbit Monoclonal Antibody - Protocols

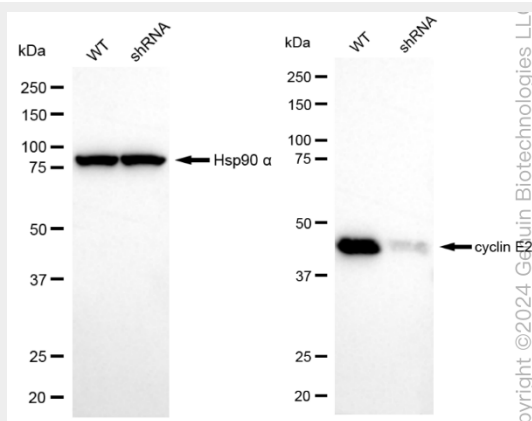
Provided below are standard protocols that you may find useful for product applications.

- [Western Blot](#)
- [Blocking Peptides](#)
- [Dot Blot](#)
- [Immunohistochemistry](#)
- [Immunofluorescence](#)
- [Immunoprecipitation](#)
- [Flow Cytometry](#)
- [Cell Culture](#)

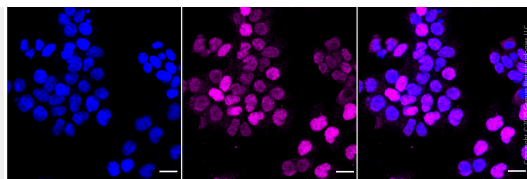
KD-Validated Anti-Cyclin E2 Rabbit Monoclonal Antibody - Images



Western blotting analysis using anti-cyclin E2 antibody (Cat#AGI1855). Total cell lysates (30 µg) from various cell lines were loaded and separated by SDS-PAGE. The blot was incubated with anti-cyclin E2 antibody (Cat#AGI1855, 1:5,000) and HRP-conjugated goat anti-rabbit secondary antibody respectively.



Western blotting analysis using anti-cyclin E2 antibody (Cat#AGI1855). Cyclin E2 expression in wild-type (WT) and cyclin E2 (CCNE2) shRNA knockdown (KD) HeLa cells with 20 µg of total cell lysates. Hsp90 α serves as a loading control. The blot was incubated with anti-cyclin E2 antibody (Cat#AGI1855, 1:5,000) and HRP-conjugated goat anti-rabbit secondary antibody respectively.



Immunocytochemical staining of HeLa cells with cyclin E2 antibody (Cat#AGI1855, 1:1,000). Nuclei were stained blue with DAPI; Cyclin E2 was stained magenta with Alexa Fluor® 647. Images were taken using Leica stellaris 5. Protein abundance based on laser Intensity and smart gain: Medium. Scale bar: 20 μ m.