

KD-Validated Anti-Phospho-CDC6 (Ser106) Rabbit Monoclonal Antibody
Rabbit monoclonal antibody
Catalog # AGI1857**Specification**

KD-Validated Anti-Phospho-CDC6 (Ser106) Rabbit Monoclonal Antibody - Product Information

Application	WB, ICC
Primary Accession	Q99741
Reactivity	Human
Clonality	Monoclonal
Isotype	Rabbit IgG
Calculated MW	Predicted, 63 kDa, observed, 63 kDa kDa
Gene Name	CDC6
Aliases	CDC6; Cell Division Cycle 6; CDC18L; Cell Division Control Protein 6 Homolog; Cdc18-Related Protein; CDC6-Related Protein; P62(Cdc6); HsCDC6; CDC6 (Cell Division Cycle 6, S. Cerevisiae) Homolog; CDC6 Cell Division Cycle 6 Homolog (S. Cerevisiae); Cell Division Cycle 6 Homolog (S. Cerevisiae); CDC6 Cell Division Cycle 6 Homolog; Cell Division Cycle 6 Homolog; HsCDC18; HsCdc18; MGORS5
Immunogen	A synthesized peptide derived from human Phospho-CDC6 (Ser106)

KD-Validated Anti-Phospho-CDC6 (Ser106) Rabbit Monoclonal Antibody - Additional Information

Gene ID	990
Other Names	
Cell division control protein 6 homolog, CDC6-related protein, Cdc18-related protein, HsCdc18, p62(cdc6), HsCDC6, CDC6, CDC18L	

KD-Validated Anti-Phospho-CDC6 (Ser106) Rabbit Monoclonal Antibody - Protein Information**Name** CDC6**Synonyms** CDC18L**Function**

Involved in the initiation of DNA replication. Also participates in checkpoint controls that ensure DNA replication is completed before mitosis is initiated.

Cellular Location

Nucleus. Cytoplasm Note=The protein is nuclear in G1 and cytoplasmic in S-phase cells

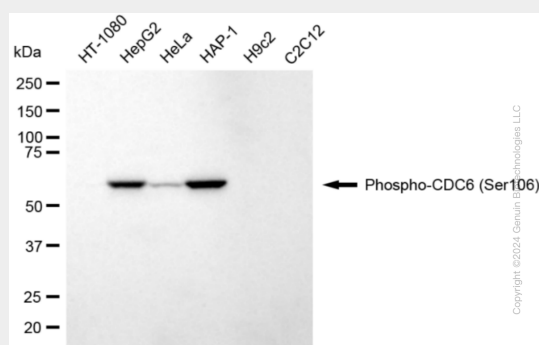
(PubMed:9566895).

KD-Validated Anti-Phospho-CDC6 (Ser106) Rabbit Monoclonal Antibody - Protocols

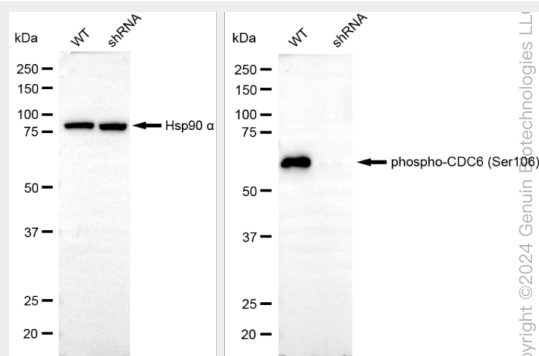
Provided below are standard protocols that you may find useful for product applications.

- [Western Blot](#)
- [Blocking Peptides](#)
- [Dot Blot](#)
- [Immunohistochemistry](#)
- [Immunofluorescence](#)
- [Immunoprecipitation](#)
- [Flow Cytometry](#)
- [Cell Culture](#)

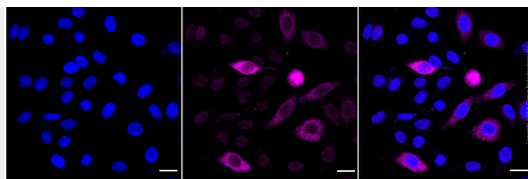
KD-Validated Anti-Phospho-CDC6 (Ser106) Rabbit Monoclonal Antibody - Images



Western blotting analysis using anti-phospho-CDC6 (Ser106) antibody (Cat#AGI1857). Total cell lysates (30 µg) from various cell lines were loaded and separated by SDS-PAGE. The blot was incubated with anti-phospho-CDC6 (Ser106) antibody (Cat#AGI1857, 1:5,000) and HRP-conjugated goat anti-rabbit secondary antibody respectively.



Western blotting analysis using anti-phospho-CDC6 (Ser106) antibody (Cat#AGI1857). Phospho-CDC6 (Ser106) expression in wild type (WT) and CDC6 shRNA knockdown (KD) HeLa cells with 20 µg of total cell lysates. Hsp90 α serves as a loading control. The blot was incubated with anti-phospho-CDC6 (Ser106) antibody (Cat#AGI1857, 1:5,000) and HRP-conjugated goat anti-rabbit secondary antibody respectively.



Immunocytochemical staining of HepG2 cells with anti-phospho-CDC6 (Ser106) antibody (Cat#AGI1857, 1:1,000). Nuclei were stained blue with DAPI; Phospho-CDC6 (Ser106) was stained magenta with Alexa Fluor® 647. Images were taken using Leica stellaris 5. Protein abundance based on laser Intensity and smart gain: Medium. Scale bar: 20 μ m.