

KD-Validated Anti-CRABP2 Rabbit Monoclonal Antibody
Rabbit monoclonal antibody
Catalog # AGI1859**Specification**

KD-Validated Anti-CRABP2 Rabbit Monoclonal Antibody - Product Information

Application	WB, FC
Primary Accession	P29373
Reactivity	Human, Mouse
Clonality	Monoclonal
Isotype	Rabbit IgG
Calculated MW	Predicted, 16 kDa, observed, 16 kDa kDa
Gene Name	CRABP2
Aliases	CRABP2; Cellular Retinoic Acid Binding Protein 2; CRABP-II; Cellular Retinoic Acid-Binding Protein 2; Cellular Retinoic Acid-Binding Protein II; RBP6
Immunogen	Recombinant protein of human CRABP2

KD-Validated Anti-CRABP2 Rabbit Monoclonal Antibody - Additional Information

Gene ID	1382
Other Names	
Cellular retinoic acid-binding protein 2, Cellular retinoic acid-binding protein II, CRABP-II, CRABP2	

KD-Validated Anti-CRABP2 Rabbit Monoclonal Antibody - Protein Information**Name** CRABP2**Function**

Transports retinoic acid to the nucleus. Regulates the access of retinoic acid to the nuclear retinoic acid receptors.

Cellular Location

Cytoplasm. Endoplasmic reticulum. Nucleus. Note=Upon ligand binding, a conformation change exposes a nuclear localization motif and the protein is transported into the nucleus

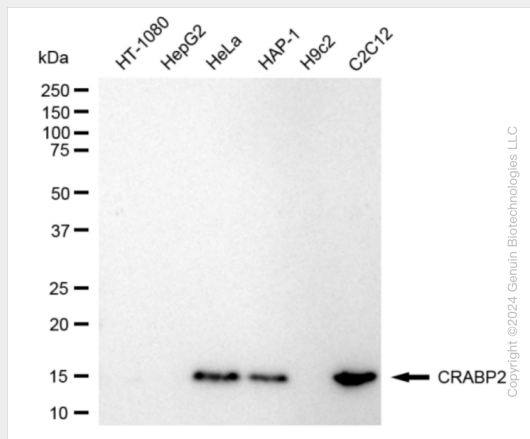
KD-Validated Anti-CRABP2 Rabbit Monoclonal Antibody - Protocols

Provided below are standard protocols that you may find useful for product applications.

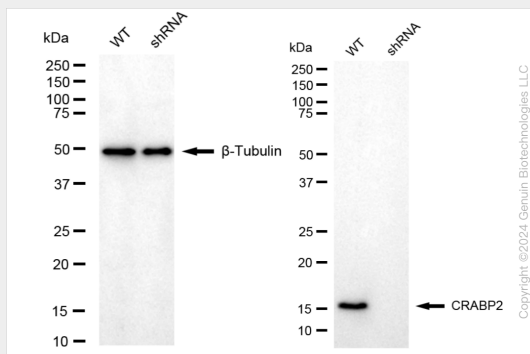
- [Western Blot](#)
- [Blocking Peptides](#)
- [Dot Blot](#)
- [Immunohistochemistry](#)
- [Immunofluorescence](#)

- [Immunoprecipitation](#)
- [Flow Cytometry](#)
- [Cell Culture](#)

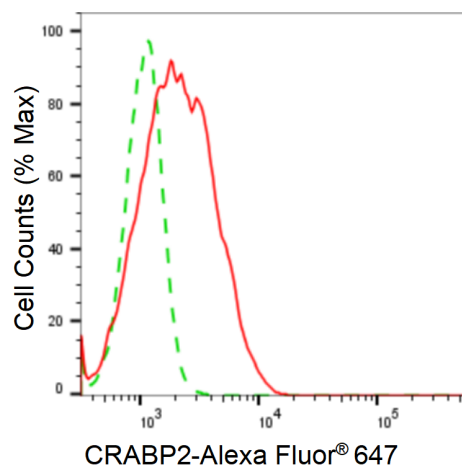
KD-Validated Anti-CRABP2 Rabbit Monoclonal Antibody - Images



Western blotting analysis using anti-CRABP2 antibody (Cat#63267). Total cell lysates (30 µg) from various cell lines were loaded and separated by SDS-PAGE. The blot was incubated with anti-CRABP2 antibody (Cat#63267, 1:5,000) and HRP-conjugated goat anti-rabbit secondary antibody (Cat#201, 1:20,000) respectively. Image was developed using FeQ™ ECL Substrate Kit (Cat#226). CRABP2, cellular retinoic acid binding protein 2.



Western blotting analysis using anti-CRABP2 antibody (Cat#63267). CRABP2 expression in wild-type (WT) and CRABP2 shRNA knockdown (KD) HeLa cells with 20 µg of total cell lysates. β-Tubulin serves as a loading control. The blot was incubated with anti-CRABP2 antibody (Cat#63267, 1:5,000) and HRP-conjugated goat anti-rabbit secondary antibody (Cat#201, 1:20,000) respectively. Image was developed using NaQ™ ECL Substrate Kit (Cat#716).



Flow cytometric analysis of CRABP2 expression in C2C12 cells using anti-CRABP2 antibody (Cat#63267, 1:2,000). Green, isotype control; red, CRABP2.