

KD-Validated Anti-Doublecortin Like Kinase 1 Rabbit Monoclonal Antibody
Rabbit monoclonal antibody
Catalog # AGI1861**Specification**

KD-Validated Anti-Doublecortin Like Kinase 1 Rabbit Monoclonal Antibody - Product Information

Application	WB, FC
Primary Accession	O15075
Reactivity	Human, Mouse
Clonality	Monoclonal
Isotype	Rabbit IgG
Calculated MW	Predicted, 82 kDa, observed, 75 kDa kDa
Gene Name	DCLK1
Aliases	DCLK1; Doublecortin Like Kinase 1; DCDC3A; KIAA0369; DCAMKL1; DCLK; Doublecortin Domain-Containing Protein 3A; Doublecortin-Like And CAM Kinase-Like 1; Serine/Threonine-Protein Kinase DCLK1; Doublecortin-Like Kinase 1; EC 2.7.11.1; Doublecortin And CaM Kinase-Like 1; EC 2.7.11; CLICK1; CL1
Immunogen	A synthesized peptide derived from human DCAMKL1

KD-Validated Anti-Doublecortin Like Kinase 1 Rabbit Monoclonal Antibody - Additional Information

Gene ID	9201
Other Names	Serine/threonine-protein kinase DCLK1, 2.7.11.1, Doublecortin domain-containing protein 3A, Doublecortin-like and CAM kinase-like 1, Doublecortin-like kinase 1, DCLK1, DCAMKL1, DCDC3A, KIAA0369

KD-Validated Anti-Doublecortin Like Kinase 1 Rabbit Monoclonal Antibody - Protein Information**Name** DCLK1**Synonyms** DCAMKL1, DCDC3A, KIAA0369**Function**

Probable kinase that may be involved in a calcium-signaling pathway controlling neuronal migration in the developing brain. May also participate in functions of the mature nervous system.

Tissue Location

In fetal tissues, highly expressed in brain, detectable in lung and liver, but not in kidney. In adult tissues, expressed ubiquitously in the brain, detectable in the heart, liver, spleen, thymus,

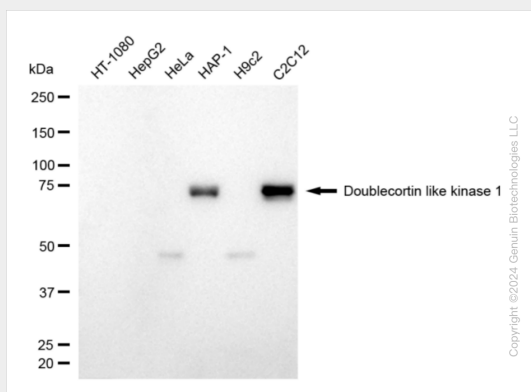
prostate, testis, ovary, small intestine and colon. The type A isoforms seem to be expressed predominantly in fetal brain whereas type B isoforms are expressed abundantly in both fetal and adult brain.

KD-Validated Anti-Doublecortin Like Kinase 1 Rabbit Monoclonal Antibody - Protocols

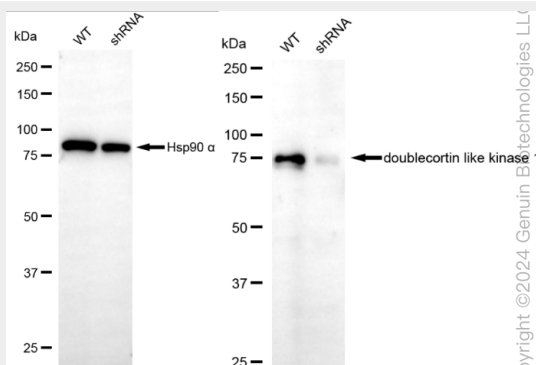
Provided below are standard protocols that you may find useful for product applications.

- [Western Blot](#)
- [Blocking Peptides](#)
- [Dot Blot](#)
- [Immunohistochemistry](#)
- [Immunofluorescence](#)
- [Immunoprecipitation](#)
- [Flow Cytometry](#)
- [Cell Culture](#)

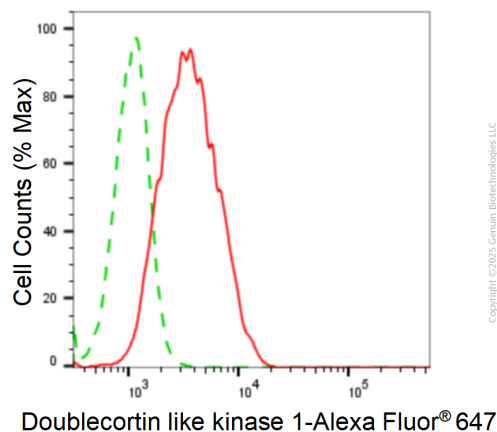
KD-Validated Anti-Doublecortin Like Kinase 1 Rabbit Monoclonal Antibody - Images



Western blotting analysis using anti-doublecortin like kinase 1 antibody (Cat#AGI1861). Total cell lysates (30 µg) from various cell lines were loaded and separated by SDS-PAGE. The blot was incubated with anti-doublecortin like kinase 1 antibody (Cat#AGI1861, 1:5,000) and HRP-conjugated goat anti-rabbit secondary antibody respectively.



Western blotting analysis using anti-doublecortin like kinase 1 antibody (Cat#AGI1861). Doublecortin like kinase 1 expression in wild-type (WT) and doublecortin like kinase 1 (DCLK1) shRNA knockdown (KD) HeLa cells with 20 µg of total cell lysates. β-Tubulin serves as a loading control. The blot was incubated with anti-doublecortin like kinase 1 antibody (Cat#AGI1861, 1:5,000) and HRP-conjugated goat anti-rabbit secondary antibody respectively.



Flow cytometric analysis of doublecortin like kinase 1 expression in C2C12 cells using anti-doublecortin like kinase 1 antibody (Cat#AGI1861, 1:2,000). Green, isotype control; red, doublecortin like kinase 1.