

KD-Validated Anti-DFFA Rabbit Monoclonal Antibody
Rabbit monoclonal antibody
Catalog # AGI1862**Specification**

KD-Validated Anti-DFFA Rabbit Monoclonal Antibody - Product Information

Application	WB, FC, ICC
Primary Accession	O00273
Reactivity	Human
Clonality	Monoclonal
Isotype	Rabbit IgG
Calculated MW	Predicted, 37 kDa, observed, 40 kDa
Gene Name	KDa DFFA
Aliases	DFFA; DNA Fragmentation Factor Subunit Alpha; DFF-45; DFF45; ICAD; DFF1; DNA Fragmentation Factor, 45kDa, Alpha Polypeptide; DNA Fragmentation Factor 45KDa Subunit; Inhibitor Of CAD; DNA Fragmentation Factor, 45 KD, Alpha Polypeptide; DNA Fragmentation Factor, 45 KD, Alpha Subunit
Immunogen	A synthesized peptide derived from human ICAD

KD-Validated Anti-DFFA Rabbit Monoclonal Antibody - Additional Information

Gene ID	1676
Other Names	
DNA fragmentation factor subunit alpha, DNA fragmentation factor 45 kDa subunit, DFF-45, Inhibitor of CAD, ICAD, DFFA, DFF1, DFF45	

KD-Validated Anti-DFFA Rabbit Monoclonal Antibody - Protein Information**Name** DFFA**Synonyms** DFF1, DFF45**Function**

Inhibitor of the caspase-activated DNase (DFF40).

Cellular Location

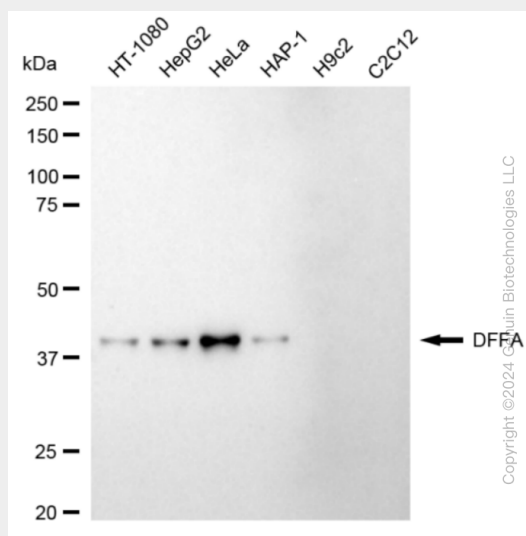
Cytoplasm.

KD-Validated Anti-DFFA Rabbit Monoclonal Antibody - Protocols

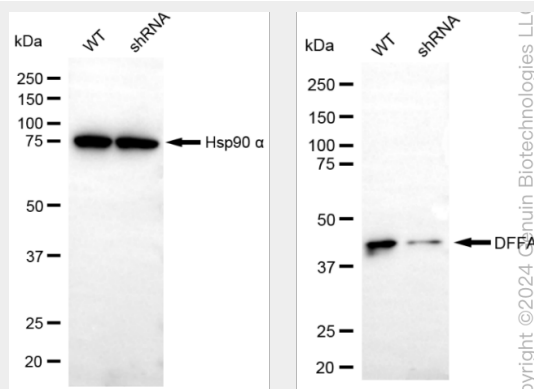
Provided below are standard protocols that you may find useful for product applications.

- [Western Blot](#)
- [Blocking Peptides](#)
- [Dot Blot](#)
- [Immunohistochemistry](#)
- [Immunofluorescence](#)
- [Immunoprecipitation](#)
- [Flow Cytometry](#)
- [Cell Culture](#)

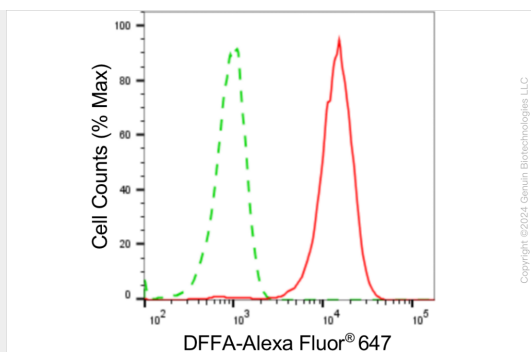
KD-Validated Anti-DFFA Rabbit Monoclonal Antibody - Images



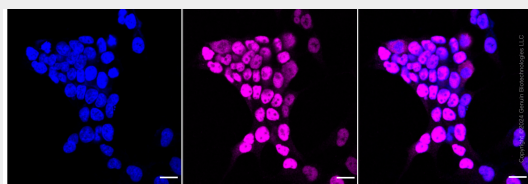
Western blotting analysis using anti-DFFA antibody (Cat#AGI1862). Total cell lysates (30 µg) from various cell lines were loaded and separated by SDS-PAGE. The blot was incubated with anti-DFFA antibody (Cat#AGI1862, 1:5,000) and HRP-conjugated goat anti-rabbit secondary antibody respectively.



Western blotting analysis using anti-DFFA antibody (Cat#AGI1862). DFFA expression in wild-type (WT) and DFFA shRNA knockdown (KD) HeLa cells with 20 µg of total cell lysates. Hsp90 α serves as a loading control. The blot was incubated with anti-DFFA antibody (Cat#AGI1862, 1:5,000) and HRP-conjugated goat anti-rabbit secondary antibody respectively.



Flow cytometric analysis of DFFA expression in HeLa cells using anti-DFFA antibody (Cat#AGI1862, 1:2,000). Green, isotype control; red, DFFA.



Immunocytochemical staining of HeLa cells with DFFA antibody (Cat#AGI1862, 1:1,000). Nuclei were stained blue with DAPI; DFFA was stained magenta with Alexa Fluor® 647. Images were taken using Leica stellaris 5. Protein abundance based on laser Intensity and smart gain: High. Scale bar: 20 μ m.