

**KD-Validated Anti-GCLC Rabbit Monoclonal Antibody**  
**Rabbit monoclonal antibody**  
**Catalog # AGI1864****Specification**

---

**KD-Validated Anti-GCLC Rabbit Monoclonal Antibody - Product Information**

Application	WB, FC, ICC
Primary Accession	<a href="#">P48506</a>
Reactivity	Rat, Human, Mouse
Clonality	Monoclonal
Isotype	Rabbit IgG
Calculated MW	Predicted, 73 kDa, observed, 73 kDa
Gene Name	GCLC
Aliases	GCLC; Glutamate-Cysteine Ligase Catalytic Subunit; GLCLC; GLCL; GCS; Glutamate--Cysteine Ligase Catalytic Subunit; Gamma-Glutamylcysteine Synthetase; GCS Heavy Chain; EC 6.3.2.2; Gamma-ECS; Glutamate-Cysteine Ligase, Catalytic Subunit; GCL
Immunogen	Recombinant protein of human GCLC

**KD-Validated Anti-GCLC Rabbit Monoclonal Antibody - Additional Information**

Gene ID 2729

**Other Names**

Glutamate--cysteine ligase catalytic subunit, 6.3.2.2, GCS heavy chain, Gamma-ECS, Gamma-glutamylcysteine synthetase, GCLC ([http://www.genenames.org/cgi-bin/gene\\_symbol\\_report?hgnc\\_id=4311](http://www.genenames.org/cgi-bin/gene_symbol_report?hgnc_id=4311))>HGNC:4311</a>), GLCL, GLCLC

**KD-Validated Anti-GCLC Rabbit Monoclonal Antibody - Protein Information****Name** GCLC ([HGNC:4311](#))**Synonyms** GLCL, GLCLC**Function**

Catalyzes the ATP-dependent ligation of L-glutamate and L- cysteine and participates in the first and rate-limiting step in glutathione biosynthesis.

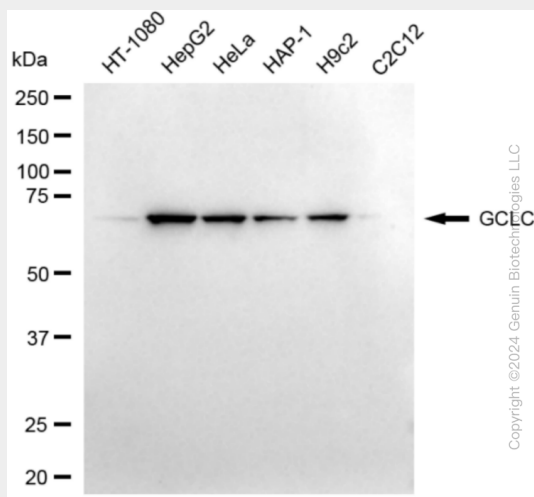
**KD-Validated Anti-GCLC Rabbit Monoclonal Antibody - Protocols**

Provided below are standard protocols that you may find useful for product applications.

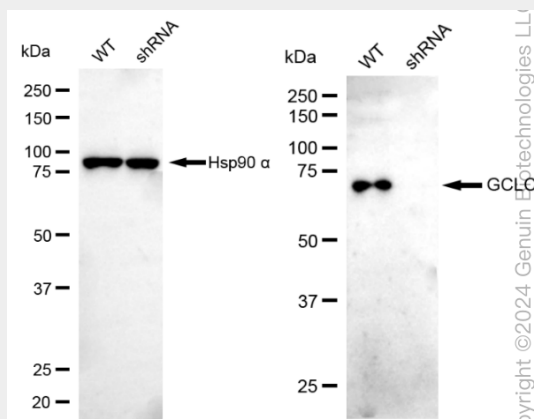
- [Western Blot](#)

- [Blocking Peptides](#)
- [Dot Blot](#)
- [Immunohistochemistry](#)
- [Immunofluorescence](#)
- [Immunoprecipitation](#)
- [Flow Cytometry](#)
- [Cell Culture](#)

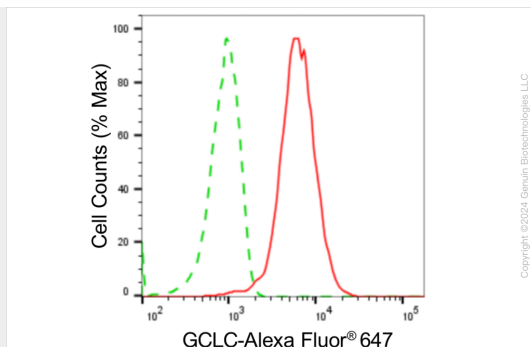
## KD-Validated Anti-GCLC Rabbit Monoclonal Antibody - Images



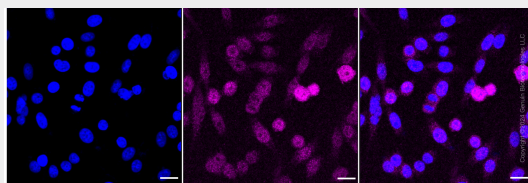
Western blotting analysis using anti-GCLC antibody (Cat#AGI1864). Total cell lysates (30 µg) from various cell lines were loaded and separated by SDS-PAGE. The blot was incubated with anti-GCLC antibody (Cat#AGI1864, 1:5,000) and HRP-conjugated goat anti-rabbit secondary antibody respectively.



Western blotting analysis using anti-GCLC antibody (Cat#AGI1864). GCLC expression in wild type (WT) and GCLC shRNA knockdown (KD) HeLa cells with 20 µg of total cell lysates. Hsp90 α serves as a loading control. The blot was incubated with anti-GCLC antibody (Cat#AGI1864, 1:5,000) and HRP-conjugated goat anti-rabbit secondary antibody respectively.



Flow cytometric analysis of GCLC expression in HepG2 cells using anti-GCLC antibody ((Cat#AGI1864, 1:2,000). Green, isotype control; red, GCLC.



Immunocytochemical staining of HepG2 cells with anti-GCLC antibody (Cat#AGI1864, 1:1,000). Nuclei were stained blue with DAPI; GCLC was stained magenta with Alexa Fluor® 647. Images were taken using Leica stellaris 5. Protein abundance based on laser Intensity and smart gain: Medium. Scale bar: 20 µm.