

KD-Validated Anti-G Protein-Coupled Receptor Kinase 6 Rabbit Monoclonal Antibody
Rabbit monoclonal antibody
Catalog # AGI1865**Specification**

KD-Validated Anti-G Protein-Coupled Receptor Kinase 6 Rabbit Monoclonal Antibody - Product Information

Application	WB, FC
Primary Accession	P43250
Reactivity	Rat, Human, Mouse
Clonality	Monoclonal
Isotype	Rabbit IgG
Calculated MW	Predicted, 66 kDa, observed, 70 kDa
Gene Name	GRK6
Aliases	GRK6; G Protein-Coupled Receptor Kinase 6; GPRK6; EC 2.7.11.16; G Protein-Coupled Receptor Kinase GRK6; EC 2.7.11
Immunogen	A synthesized peptide derived from human GRK6

KD-Validated Anti-G Protein-Coupled Receptor Kinase 6 Rabbit Monoclonal Antibody - Additional Information

Gene ID	2870
Other Names	
G protein-coupled receptor kinase 6, 2.7.11.16, G protein-coupled receptor kinase GRK6, GRK6, GPRK6	

KD-Validated Anti-G Protein-Coupled Receptor Kinase 6 Rabbit Monoclonal Antibody - Protein Information**Name** GRK6**Synonyms** GPRK6**Function**

Specifically phosphorylates the activated forms of G protein- coupled receptors. Such receptor phosphorylation initiates beta- arrestin-mediated receptor desensitization, internalization, and signaling events leading to their desensitization. Seems to be involved in the desensitization of D2-like dopamine receptors in striatum and chemokine receptor CXCR4 which is critical for CXCL12-induced cell chemotaxis (By similarity). Phosphorylates rhodopsin (RHO) (in vitro) and a non G-protein-coupled receptor: LRP6 during Wnt signaling (in vitro).

Cellular Location

Membrane; Lipid-anchor.

Tissue Location

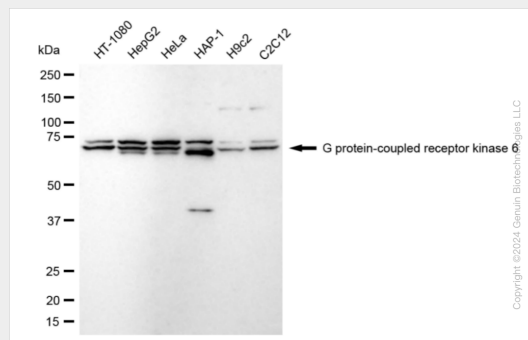
Widely expressed..

KD-Validated Anti-G Protein-Coupled Receptor Kinase 6 Rabbit Monoclonal Antibody - Protocols

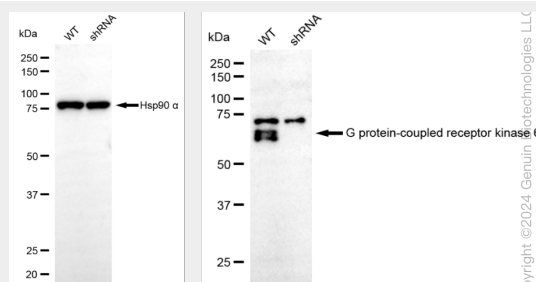
Provided below are standard protocols that you may find useful for product applications.

- [Western Blot](#)
- [Blocking Peptides](#)
- [Dot Blot](#)
- [Immunohistochemistry](#)
- [Immunofluorescence](#)
- [Immunoprecipitation](#)
- [Flow Cytometry](#)
- [Cell Culture](#)

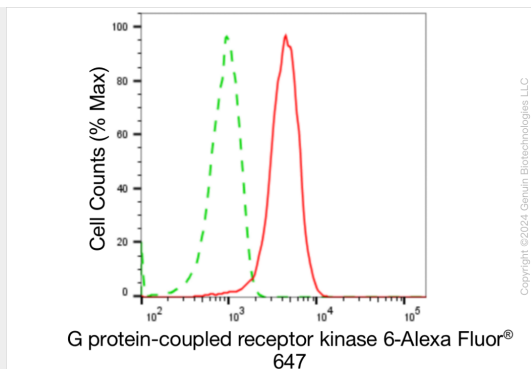
KD-Validated Anti-G Protein-Coupled Receptor Kinase 6 Rabbit Monoclonal Antibody - Images



Western blotting analysis using anti-G protein-coupled receptor kinase 6 antibody (Cat#AGI1865). Total cell lysates (30 µg) from various cell lines were loaded and separated by SDS-PAGE. The blot was incubated with anti-G protein-coupled receptor kinase 6 antibody (Cat#AGI1865, 1:5,000) and HRP-conjugated goat anti-rabbit secondary antibody respectively.



Western blotting analysis using anti-G protein-coupled receptor kinase 6 antibody (Cat#AGI1865). GRK6 expression in wild type (WT) and GRK6 shRNA knockdown (KD) HeLa cells with 20 µg of total cell lysates. Hsp90 α serves as a loading control. The blot was incubated with anti-G protein-coupled receptor kinase 6 antibody (Cat#AGI1865, 1:5,000) and HRP-conjugated goat anti-rabbit secondary antibody respectively.



Flow cytometric analysis of G protein-coupled receptor kinase 6 expression in HepG2 cells using anti-G protein-coupled receptor kinase 6 antibody (Cat#AGI1865, 1:2,000). Green, isotype control; red, G protein-coupled receptor kinase 6.