

**KD-Validated Anti-IGFBP7 Rabbit Monoclonal Antibody**  
**Rabbit monoclonal antibody**  
**Catalog # AGI1866****Specification****KD-Validated Anti-IGFBP7 Rabbit Monoclonal Antibody - Product Information**

Application	WB, FC
Primary Accession	<a href="#">Q16270</a>
Reactivity	Human
Clonality	Monoclonal
Isotype	Rabbit IgG
Calculated MW	Predicted, 29 kDa, observed, 29 kDa kDa
Gene Name	IGFBP7
Aliases	IGFBP7; Insulin Like Growth Factor Binding Protein 7; IGFBP-7; MAC25; PSF; FSTL2; Insulin-Like Growth Factor-Binding Protein 7; Prostacyclin-Stimulating Factor; Tumor-Derived Adhesion Factor; PGI2-Stimulating Factor; IGF-Binding Protein 7; IGFBP-RP1; IBP-7; TAF; Insulin-Like Growth Factor Binding Protein 7; MAC25 Protein; Angiomodulin; IGFBP-7v; IGFBPRP1; RAMSVPS; AGM
Immunogen	A synthesized peptide derived from human IGFBP7

**KD-Validated Anti-IGFBP7 Rabbit Monoclonal Antibody - Additional Information**

Gene ID	3490
<b>Other Names</b>	Insulin-like growth factor-binding protein 7, IBP-7, IGF-binding protein 7, IGFBP-7, IGFBP-rP1, MAC25 protein, PGI2-stimulating factor, Prostacyclin-stimulating factor, Tumor-derived adhesion factor, TAF, IGFBP7, MAC25, PSF

**KD-Validated Anti-IGFBP7 Rabbit Monoclonal Antibody - Protein Information****Name** IGFBP7**Synonyms** MAC25, PSF**Function**

Binds IGF1 and IGF2 with a relatively low affinity. Stimulates prostacyclin (PGI2) production. Stimulates cell adhesion. Acts as a ligand for CD93 to play a role in angiogenesis (PubMed:<a href="http://www.uniprot.org/citations/38218180" target="\_blank">38218180</a>).

**Cellular Location**

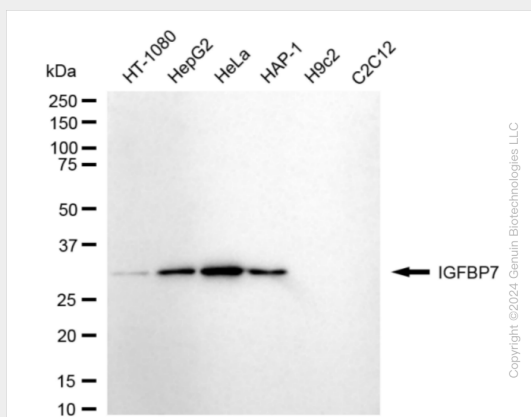
Secreted.

## KD-Validated Anti-IGFBP7 Rabbit Monoclonal Antibody - Protocols

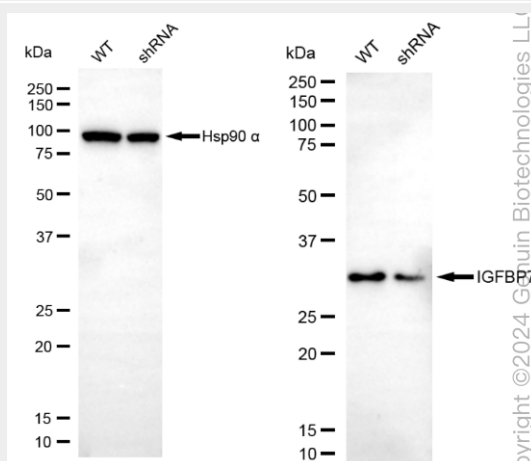
Provided below are standard protocols that you may find useful for product applications.

- [Western Blot](#)
- [Blocking Peptides](#)
- [Dot Blot](#)
- [Immunohistochemistry](#)
- [Immunofluorescence](#)
- [Immunoprecipitation](#)
- [Flow Cytometry](#)
- [Cell Culture](#)

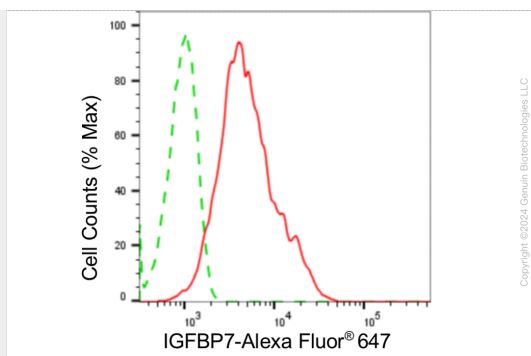
## KD-Validated Anti-IGFBP7 Rabbit Monoclonal Antibody - Images



Western blotting analysis using anti-IGFBP7 antibody (Cat#AGI1866). Total cell lysates (30 µg) from various cell lines were loaded and separated by SDS-PAGE. The blot was incubated with anti-IGFBP7 antibody (Cat#AGI1866, 1:5,000) and HRP-conjugated goat anti-rabbit secondary antibody respectively.



Western blotting analysis using anti-IGFBP7 antibody (Cat#AGI1866). IGFBP7 expression in wild-type (WT) and IGFBP7 shRNA knockdown (KD) HT-1080 cells with 20 µg of total cell lysates. β-Tubulin serves as a loading control. The blot was incubated with anti-IGFBP7 antibody (Cat#AGI1866, 1:5,000) and HRP-conjugated goat anti-rabbit secondary antibody respectively.



Flow cytometric analysis of IGFBP7 expression in HepG2 cells using anti-IGFBP7 antibody (Cat#AGI1866, 1:2,000). Green, isotype control; red, IGFBP7.