

**KD-Validated Anti-LDL Receptor Related Protein 1 Rabbit Monoclonal Antibody**  
**Rabbit monoclonal antibody**  
**Catalog # AGI1869****Specification****KD-Validated Anti-LDL Receptor Related Protein 1 Rabbit Monoclonal Antibody - Product Information**

Application	WB, FC
Primary Accession	<a href="#">Q07954</a>
Reactivity	Rat, Human, Mouse
Clonality	Monoclonal
Isotype	Rabbit IgG
Calculated MW	Predicted, 505 kDa, observed, 85 kDa KDa
Gene Name	LRP1
Aliases	LRP1; LDL Receptor Related Protein 1; APOER; Alpha-2-Macroglobulin Receptor; IGFBP3R1; IGFBP-3R; LRP1A; CD91; A2Human, rat; LRP; APR; Prolow-Density Lipoprotein Receptor-Related Protein 1; Low Density Lipoprotein Receptor-Related Protein 1; Apolipoprotein E Receptor; Transforming Growth Factor- $\beta$ Receptor Type V; TbetaR-V/LRP-1/IGFBP-3 Receptor; Type V Tgf-Beta Receptor; CD91 Antigen; EC 3.4.21.9; EC 1.1.1.94; IGFBP3R; TGFB5; LRP-1; KPA
Immunogen	A synthesized peptide derived from human LRP1

**KD-Validated Anti-LDL Receptor Related Protein 1 Rabbit Monoclonal Antibody - Additional Information**

Gene ID	4035
<b>Other Names</b>	
Prolow-density lipoprotein receptor-related protein 1, LRP-1, Alpha-2-macroglobulin receptor, A2MR, Apolipoprotein E receptor, APOER, CD91, Low-density lipoprotein receptor-related protein 1 85 kDa subunit, LRP-85, Low-density lipoprotein receptor-related protein 1 515 kDa subunit, LRP-515, Low-density lipoprotein receptor-related protein 1 intracellular domain, LRPICD, LRP1 ( <a href="http://www.genenames.org/cgi-bin/gene_symbol_report?hgnc_id=6692" target="_blank">http://www.genenames.org/cgi-bin/gene_symbol_report?hgnc_id=6692</a> ), A2MR, APR	

**KD-Validated Anti-LDL Receptor Related Protein 1 Rabbit Monoclonal Antibody - Protein Information****Name** LRP1 ([HGNC:6692](#))**Synonyms** A2MR, APR

## Function

Endocytic receptor involved in endocytosis and in phagocytosis of apoptotic cells (PubMed:<a href="http://www.uniprot.org/citations/11907044" target="\_blank">11907044</a>, PubMed:<a href="http://www.uniprot.org/citations/12713657" target="\_blank">12713657</a>). Required for early embryonic development (By similarity). Involved in cellular lipid homeostasis. Involved in the plasma clearance of chylomicron remnants and activated LRPAP1 (alpha 2-macroglobulin), as well as the local metabolism of complexes between plasminogen activators and their endogenous inhibitors. Acts as an LRPAP1 alpha-2- macroglobulin receptor (PubMed:<a href="http://www.uniprot.org/citations/1702392" target="\_blank">1702392</a>, PubMed:<a href="http://www.uniprot.org/citations/26142438" target="\_blank">26142438</a>). Acts as TAU/MAPT receptor and controls the endocytosis of TAU/MAPT as well as its subsequent spread (PubMed:<a href="http://www.uniprot.org/citations/32296178" target="\_blank">32296178</a>). May modulate cellular events, such as APP metabolism, kinase-dependent intracellular signaling, neuronal calcium signaling as well as neurotransmission (PubMed:<a href="http://www.uniprot.org/citations/12888553" target="\_blank">12888553</a>). Also acts as a receptor for IGFBP3 to mediate cell growth inhibition (PubMed:<a href="http://www.uniprot.org/citations/9252371" target="\_blank">9252371</a>).

## Cellular Location

[Low-density lipoprotein receptor-related protein 1 85 kDa subunit]: Cell membrane; Single-pass type I membrane protein Membrane, coated pit [Low-density lipoprotein receptor-related protein 1 intracellular domain]: Cytoplasm Nucleus. Note=After cleavage, the intracellular domain (LRPICD) is detected both in the cytoplasm and in the nucleus.

## Tissue Location

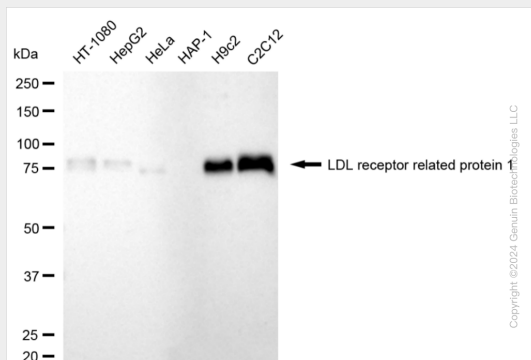
Most abundant in liver, brain and lung.

## KD-Validated Anti-LDL Receptor Related Protein 1 Rabbit Monoclonal Antibody - Protocols

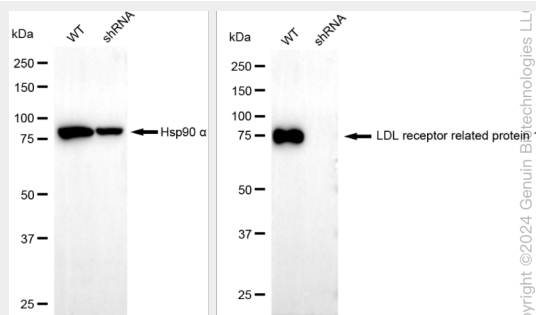
Provided below are standard protocols that you may find useful for product applications.

- [Western Blot](#)
- [Blocking Peptides](#)
- [Dot Blot](#)
- [Immunohistochemistry](#)
- [Immunofluorescence](#)
- [Immunoprecipitation](#)
- [Flow Cytometry](#)
- [Cell Culture](#)

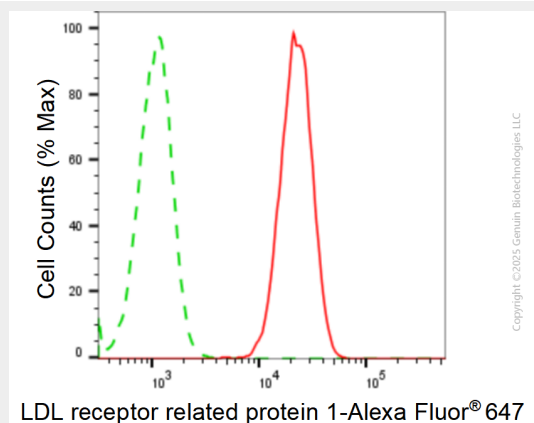
## KD-Validated Anti-LDL Receptor Related Protein 1 Rabbit Monoclonal Antibody - Images



Western blotting analysis using anti-LDL receptor related protein 1 antibody (Cat#AGI1869). Total cell lysates (30  $\mu$ g) from various cell lines were loaded and separated by SDS-PAGE. The blot was incubated with anti-LDL receptor related protein 1 antibody (Cat#AGI1869, 1:5,000) and HRP-conjugated goat anti-rabbit secondary antibody respectively.



Western blotting analysis using anti-LDL receptor related protein 1 antibody (Cat#AGI1869). LDL receptor related protein 1 expression in wild type (WT) and LDL receptor related protein 1 (LRP1) shRNA knockdown (KD) HeLa cells with 20  $\mu$ g of total cell lysates.  $\beta$ -Tubulin serves as a loading control. The blot was incubated with anti-LDL receptor related protein 1 antibody (Cat#AGI1869, 1:5,000) and HRP-conjugated goat anti-rabbit secondary antibody respectively.



Flow cytometric analysis of LDL receptor related protein 1 expression in C2C12 cells using anti-LDL receptor related protein 1 antibody (Cat#AGI1869, 1:2,000). Green, isotype control; red, LDL receptor related protein 1.