

**KD-Validated Anti-STAU1 Rabbit Monoclonal Antibody**  
**Rabbit monoclonal antibody**  
**Catalog # AGI1880****Specification**

---

**KD-Validated Anti-STAU1 Rabbit Monoclonal Antibody - Product Information**

Application	WB, FC
Primary Accession	<a href="#">O95793</a>
Reactivity	Rat, Human, Mouse
Clonality	Monoclonal
Isotype	Rabbit IgG
Calculated MW	Predicted, 63 kDa, observed, 63 kDa kDa
Gene Name	STAU1
Aliases	STAU1; Staufen Double-Stranded RNA Binding Protein 1; PPP1R150; STAU; Double-Stranded RNA-Binding Protein Staufen Homolog 1; Protein Phosphatase 1, Regulatory Subunit 150; Staufen, RNA Binding Protein, Homolog 1 (Drosophila); Staufen (Drosophila, RNA-Binding Protein); Staufen, RNA Binding Protein (Drosophila); Staufen, RNA Binding Protein, Homolog 1 A synthesized peptide derived from human Staufen
Immunogen	

**KD-Validated Anti-STAU1 Rabbit Monoclonal Antibody - Additional Information**

Gene ID	6780
<b>Other Names</b>	
Double-stranded RNA-binding protein Staufen homolog 1, STAU1, STAU	

**KD-Validated Anti-STAU1 Rabbit Monoclonal Antibody - Protein Information****Name** STAU1**Synonyms** STAU**Function**

Binds double-stranded RNA (regardless of the sequence) and tubulin. May play a role in specific positioning of mRNAs at given sites in the cell by cross-linking cytoskeletal and RNA components, and in stimulating their translation at the site.

**Cellular Location**

Cytoplasm. Rough endoplasmic reticulum. Note=Localizes exclusively with the rough endoplasmic reticulum (RER)

**Tissue Location**

Widely expressed. Expressed in brain, pancreas, heart, skeletal muscles, liver, lung, kidney and

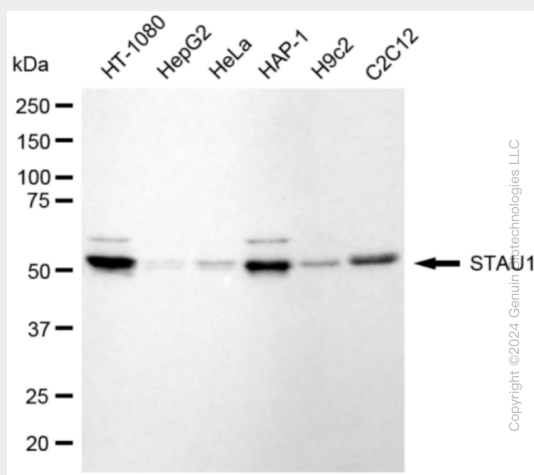
placenta

## KD-Validated Anti-STAU1 Rabbit Monoclonal Antibody - Protocols

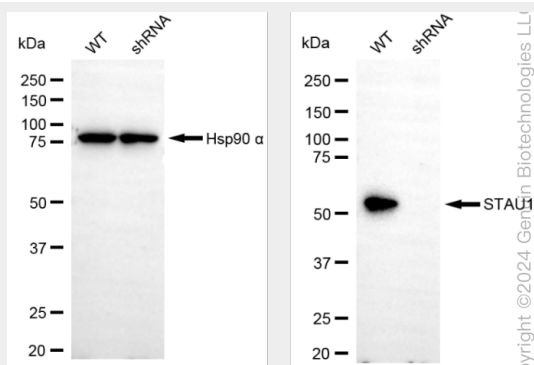
Provided below are standard protocols that you may find useful for product applications.

- [Western Blot](#)
- [Blocking Peptides](#)
- [Dot Blot](#)
- [Immunohistochemistry](#)
- [Immunofluorescence](#)
- [Immunoprecipitation](#)
- [Flow Cytometry](#)
- [Cell Culture](#)

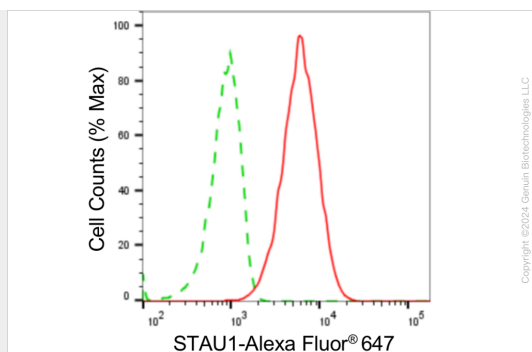
## KD-Validated Anti-STAU1 Rabbit Monoclonal Antibody - Images



Western blotting analysis using anti-STAU1 antibody (Cat#AGI1880). Total cell lysates (30 µg) from various cell lines were loaded and separated by SDS-PAGE. The blot was incubated with anti-STAU1 antibody (Cat#AGI1880, 1:5,000) and HRP-conjugated goat anti-rabbit secondary antibody respectively.



Western blotting analysis using anti-STAU1 antibody (Cat#AGI1880). STAU1 expression in wild type (WT) and STAU1 shRNA knockdown (KD) HeLa cells with 20 µg of total cell lysates. Hsp90 α serves as a loading control. The blot was incubated with anti-STAU1 antibody (Cat#AGI1880, 1:5,000) and HRP-conjugated goat anti-rabbit secondary antibody respectively.



Flow cytometric analysis of STAU1 expression in HT-1080 cells using anti-STAU1 antibody (Cat#AGI1880, 1:2,000). Green, isotype control; red, STAU1.