

KD-Validated Anti-BCL2 Like 1 Rabbit Monoclonal Antibody
Rabbit monoclonal antibody
Catalog # AGI1882

Specification

KD-Validated Anti-BCL2 Like 1 Rabbit Monoclonal Antibody - Product Information

Application	WB, ICC
Primary Accession	Q07817
Reactivity	Rat, Human, Mouse
Clonality	Monoclonal
Isotype	Rabbit IgG
Calculated MW	Predicted, 26 kDa, observed, 30 kDa kDa
Gene Name	BCL2L1
Aliases	BCL2L1; BCL2 Like 1; BCL2L; BCLX; PPP1R52; Bcl-X; Protein Phosphatase 1, Regulatory Subunit 52; Apoptosis Regulator Bcl-X; Bcl-2-Like Protein 1; Bcl-XL; Bcl-XS; BCL-XL/S; Bcl2-L-1
Immunogen	Recombinant protein of human Bcl-XL

KD-Validated Anti-BCL2 Like 1 Rabbit Monoclonal Antibody - Additional Information

Gene ID	598
Other Names	
Bcl-2-like protein 1, Bcl2-L-1, Apoptosis regulator Bcl-X, BCL2L1, BCL2L, BCLX	

KD-Validated Anti-BCL2 Like 1 Rabbit Monoclonal Antibody - Protein Information

Name BCL2L1

Synonyms BCL2L, BCLX

Function

Potent inhibitor of cell death. Inhibits activation of caspases. Appears to regulate cell death by blocking the voltage- dependent anion channel (VDAC) by binding to it and preventing the release of the caspase activator, CYC1, from the mitochondrial membrane. Also acts as a regulator of G2 checkpoint and progression to cytokinesis during mitosis. Isoform Bcl-X(S) promotes apoptosis.

Cellular Location

[Isoform Bcl-X(L)]: Mitochondrion inner membrane. Mitochondrion outer membrane Mitochondrion matrix. Cytoplasmic vesicle, secretory vesicle, synaptic vesicle membrane. Cytoplasm, cytosol. Cytoplasm, cytoskeleton, microtubule organizing center, centrosome. Nucleus membrane; Single-pass membrane protein; Cytoplasmic side. Note=After neuronal stimulation, translocates from cytosol to synaptic vesicle and mitochondrion membrane in a calmodulin-dependent manner (By similarity). Localizes to the centrosome when phosphorylated at Ser-49

Tissue Location

Bcl-X(S) is expressed at high levels in cells that undergo a high rate of turnover, such as

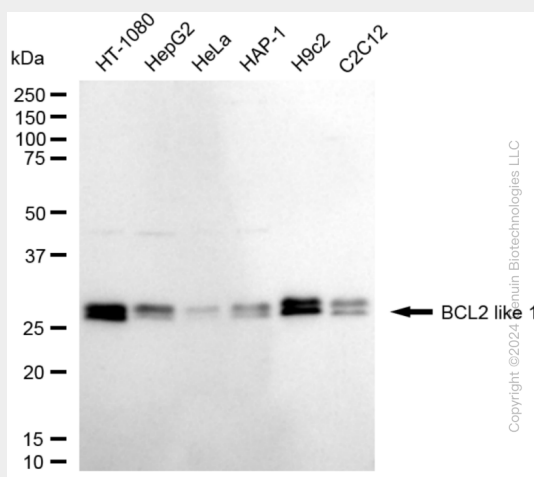
developing lymphocytes. In contrast, Bcl-X(L) is found in tissues containing long-lived postmitotic cells, such as adult brain

KD-Validated Anti-BCL2 Like 1 Rabbit Monoclonal Antibody - Protocols

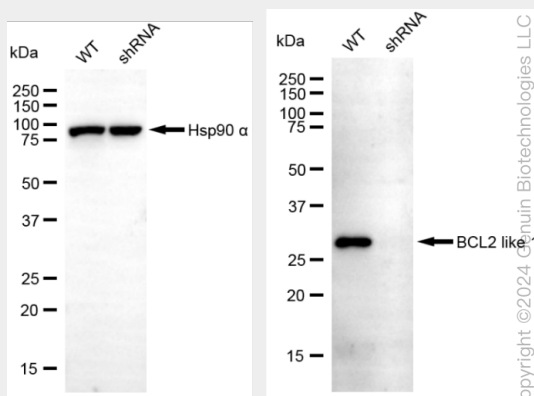
Provided below are standard protocols that you may find useful for product applications.

- [Western Blot](#)
- [Blocking Peptides](#)
- [Dot Blot](#)
- [Immunohistochemistry](#)
- [Immunofluorescence](#)
- [Immunoprecipitation](#)
- [Flow Cytometry](#)
- [Cell Culture](#)

KD-Validated Anti-BCL2 Like 1 Rabbit Monoclonal Antibody - Images

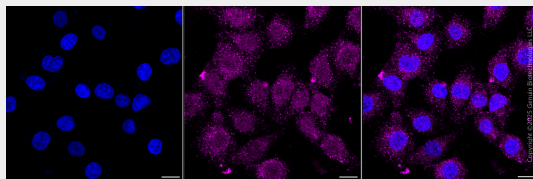


Western blotting analysis using anti-BCL2 like 1 antibody (Cat#AGI1882). Total cell lysates (30 µg) from various cell lines were loaded and separated by SDS-PAGE. The blot was incubated with anti-BCL2 like 1 antibody (Cat#AGI1882, 1:5,000) and HRP-conjugated goat anti-rabbit secondary antibody respectively.



Western blotting analysis using anti-BCL2 like 1 antibody (Cat#AGI1882). BCL2 like 1 expression in wild type (WT) and BCL2 like 1 (BCL2L1) shRNA knockdown (KD) HeLa cells with 20 µg of total cell lysates. β-Tubulin serves as a loading control. The blot was incubated with anti-BCL2 like 1

antibody (Cat#AGI1882, 1:5,000) and HRP-conjugated goat anti-rabbit secondary antibody respectively.



Immunocytochemical staining of HT-1080 cells with anti-BCL2 like 1 antibody (Cat#AGI1882, 1:1,000). Nuclei were stained blue with DAPI; BCL2 like 1 was stained magenta with Alexa Fluor® 647. Images were taken using Leica stellaris 5. Protein abundance based on laser Intensity and smart gain: Low. Scale bar, 20 μ m.