

KD-Validated Anti-Catalase Rabbit Monoclonal Antibody
Rabbit monoclonal antibody
Catalog # AGI1883**Specification**

KD-Validated Anti-Catalase Rabbit Monoclonal Antibody - Product Information

Application	WB
Primary Accession	P04040
Reactivity	Rat, Human
Clonality	Monoclonal
Isotype	Rabbit IgG
Calculated MW	Predicted, 60 kDa, observed, 60 kDa kDa
Gene Name	CAT
Aliases	CAT; Catalase; EC 1.11.1.6; Epididymis Secretory Sperm Binding Protein
Immunogen	A synthesized peptide derived from human Catalase

KD-Validated Anti-Catalase Rabbit Monoclonal Antibody - Additional Information

Gene ID	847
Other Names	
Catalase, 1.11.1.6, CAT	

KD-Validated Anti-Catalase Rabbit Monoclonal Antibody - Protein Information**Name** CAT**Function**

Catalyzes the degradation of hydrogen peroxide (H₂O₂) generated by peroxisomal oxidases to water and oxygen, thereby protecting cells from the toxic effects of hydrogen peroxide (PubMed:7882369). Promotes growth of cells including T-cells, B-cells, myeloid leukemia cells, melanoma cells, mastocytoma cells and normal and transformed fibroblast cells (PubMed:7882369).

Cellular Location

Peroxisome matrix

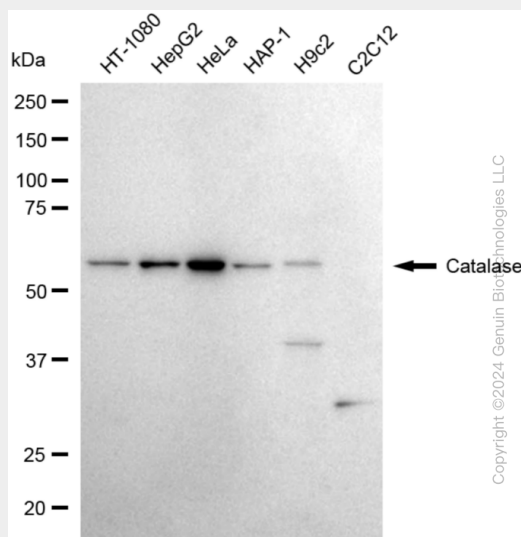
KD-Validated Anti-Catalase Rabbit Monoclonal Antibody - Protocols

Provided below are standard protocols that you may find useful for product applications.

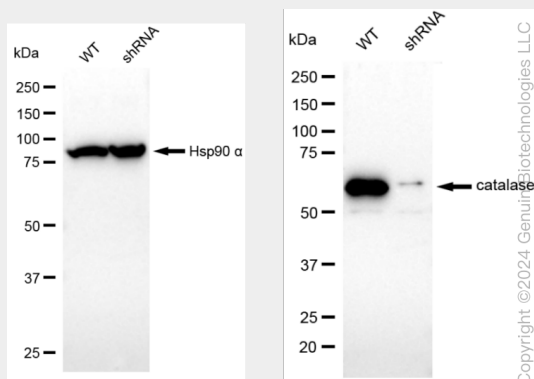
- [Western Blot](#)
- [Blocking Peptides](#)
- [Dot Blot](#)

- [Immunohistochemistry](#)
- [Immunofluorescence](#)
- [Immunoprecipitation](#)
- [Flow Cytometry](#)
- [Cell Culture](#)

KD-Validated Anti-Catalase Rabbit Monoclonal Antibody - Images



Western blotting analysis using anti-catalase antibody (Cat#AGI1883). Total cell lysates (30 µg) from various cell lines were loaded and separated by SDS-PAGE. The blot was incubated with anti-catalase antibody (Cat#AGI1883, 1:5,000) and HRP-conjugated goat anti-rabbit secondary antibody respectively.



Western blotting analysis using anti-catalase antibody (Cat#AGI1883). Catalase expression in wild type (WT) and catalase (CAT) shRNA knockdown (KD) HeLa cells with 20 µg of total cell lysates. Hsp90 α serves as a loading control. The blot was incubated with anti-catalase antibody (Cat#AGI1883, 1:5,000) and HRP-conjugated goat anti-rabbit secondary antibody respectively.