

KD-Validated Anti-E2F Transcription Factor 4 Rabbit Monoclonal Antibody
Rabbit monoclonal antibody
Catalog # AGI1884**Specification**

KD-Validated Anti-E2F Transcription Factor 4 Rabbit Monoclonal Antibody - Product Information

Application	WB, FC
Primary Accession	Q16254
Reactivity	Human
Clonality	Monoclonal
Isotype	Rabbit IgG
Calculated MW	Predicted, 44 kDa, observed, 65 kDa KDa
Gene Name	E2F4
Aliases	E2F4; E2F Transcription Factor 4; E2F-4; E2F Transcription Factor 4, P107/P130-Binding; Transcription Factor E2F4; P107/P130-Binding Protein
Immunogen	A synthesized peptide derived from human E2F4

KD-Validated Anti-E2F Transcription Factor 4 Rabbit Monoclonal Antibody - Additional Information

Gene ID 1874

Other Names

Transcription factor E2F4, E2F-4, E2F4

KD-Validated Anti-E2F Transcription Factor 4 Rabbit Monoclonal Antibody - Protein Information**Name** E2F4**Function**

Transcription activator that binds DNA cooperatively with DP proteins through the E2 recognition site, 5'-TTTC[CG]CGC-3' found in the promoter region of a number of genes whose products are involved in cell cycle regulation or in DNA replication. The DRTF1/E2F complex functions in the control of cell-cycle progression from G1 to S phase. E2F4 binds with high affinity to RBL1 and RBL2. In some instances can also bind RB1. Specifically required for multiciliate cell differentiation: together with MCIDAS and E2F5, binds and activate genes required for centriole biogenesis.

Cellular Location

Nucleus.

Tissue Location

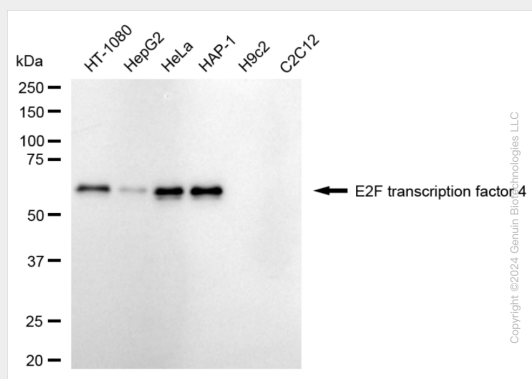
Found in all tissue examined including heart, brain, placenta, lung, liver, skeletal muscle, kidney and pancreas

KD-Validated Anti-E2F Transcription Factor 4 Rabbit Monoclonal Antibody - Protocols

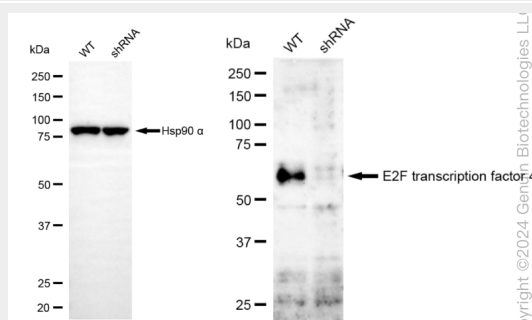
Provided below are standard protocols that you may find useful for product applications.

- [Western Blot](#)
- [Blocking Peptides](#)
- [Dot Blot](#)
- [Immunohistochemistry](#)
- [Immunofluorescence](#)
- [Immunoprecipitation](#)
- [Flow Cytometry](#)
- [Cell Culture](#)

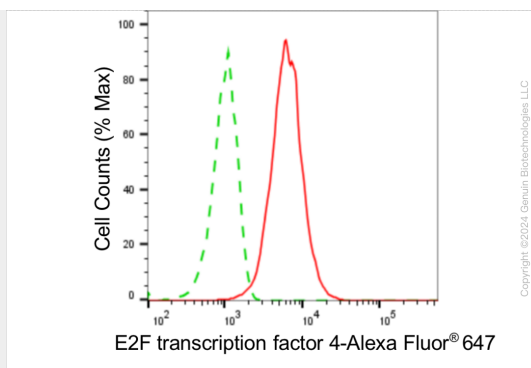
KD-Validated Anti-E2F Transcription Factor 4 Rabbit Monoclonal Antibody - Images



Western blotting analysis using anti-E2F transcription factor 4 antibody (Cat#63375). Total cell lysates (30 µg) from various cell lines were loaded and separated by SDS-PAGE. The blot was incubated with anti-E2F transcription factor 4 antibody (Cat#63375, 1:2,500) and HRP-conjugated goat anti-rabbit secondary antibody (Cat#201, 1:20,000) respectively. Image was developed using NaQ™ ECL Substrate Kit (Cat#716).



Western blotting analysis using anti-E2F transcription factor 4 antibody (Cat#63375). E2F transcription factor 4 expression in wild type (WT) and E2F transcription factor 4 (E2F4) shRNA knockdown (KD) HeLa cells with 20 µg of total cell lysates. Hsp90 α serves as a loading control. The blot was incubated with anti-E2F transcription factor 4 antibody (Cat#63375, 1:2,500) and HRP-conjugated goat anti-rabbit secondary antibody (Cat#201, 1:20,000) respectively. Image was developed using NaQ™ ECL Substrate Kit (Cat#716).



Flow cytometric analysis of E2F transcription factor 4 expression in HAP-1 cells using anti-E2F transcription factor 4 antibody (Cat#63375, 1:2,000). Green, isotype control; red, E2F transcription factor 4.