

KD-Validated Anti-ALPP Rabbit Monoclonal Antibody
Rabbit monoclonal antibody
Catalog # AGI1888**Specification**

KD-Validated Anti-ALPP Rabbit Monoclonal Antibody - Product Information

Application	WB, FC, ICC
Primary Accession	P05187
Reactivity	Human
Clonality	Monoclonal
Isotype	Rabbit IgG
Calculated MW	Predicted, 58 kDa, observed, 63 kDa kDa
Gene Name	ALPP
Aliases	ALPP; Alkaline Phosphatase, Placental; PLAP; PALP; Alkaline Phosphatase, Placental Type; Alkaline Phosphatase Regan Isozyme; Placental Alkaline Phosphatase 1; EC 3.1.3.1; PLAP-1; Alkaline Phosphatase, Placental (Regan Isozyme); Intestinal-Type Alkaline Phosphatase; Intestinal Alkaline Phosphatase; Placental Alkaline Phosphatase; Alkaline Phosphomonoesterase; Glycerophosphatase; Regan Isozyme; ALPI; ALP; IAP
Immunogen	A synthesized peptide derived from human Placental alkaline phosphatase (phospho LAP)

KD-Validated Anti-ALPP Rabbit Monoclonal Antibody - Additional Information

Gene ID	250
Other Names	
Alkaline phosphatase, placental type, 3.1.3.1, Alkaline phosphatase Regan isozyme, Placental alkaline phosphatase 1, PLAP-1, ALPP (HGNC:439)	

KD-Validated Anti-ALPP Rabbit Monoclonal Antibody - Protein Information**Name** ALPP ([HGNC:439](#))**Function**

Alkaline phosphatase that can hydrolyze various phosphate compounds.

Cellular Location

Cell membrane; Lipid-anchor, GPI-anchor

Tissue Location

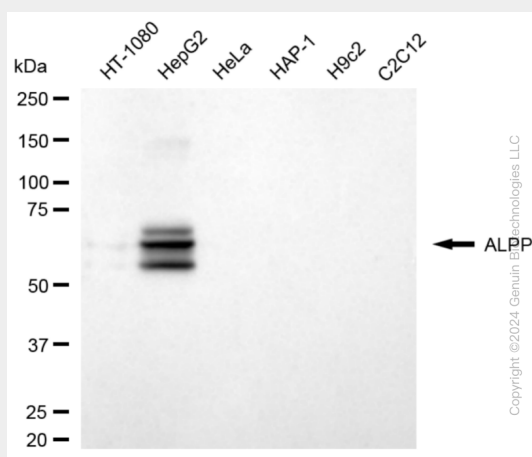
Detected in placenta (at protein level).

KD-Validated Anti-ALPP Rabbit Monoclonal Antibody - Protocols

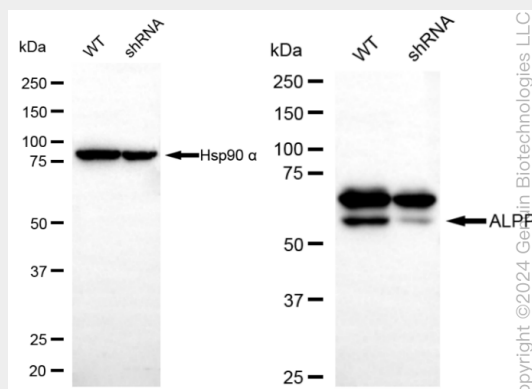
Provided below are standard protocols that you may find useful for product applications.

- [Western Blot](#)
- [Blocking Peptides](#)
- [Dot Blot](#)
- [Immunohistochemistry](#)
- [Immunofluorescence](#)
- [Immunoprecipitation](#)
- [Flow Cytometry](#)
- [Cell Culture](#)

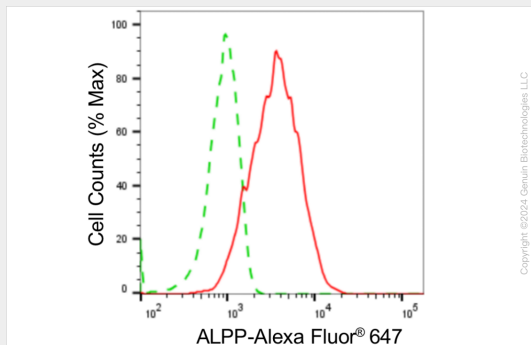
KD-Validated Anti-ALPP Rabbit Monoclonal Antibody - Images



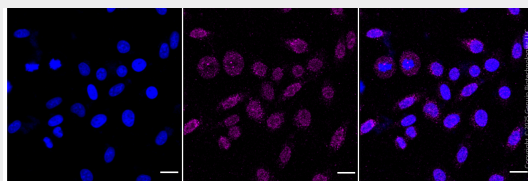
Western blotting analysis using anti-ALPP antibody (Cat#AGI1888). Total cell lysates (30 µg) from various cell lines were loaded and separated by SDS-PAGE. The blot was incubated with anti-ALPP antibody (Cat#AGI1888, 1:5,000) and HRP-conjugated goat anti-rabbit secondary antibody respectively.



Western blotting analysis using anti-ALPP antibody (Cat#AGI1888). ALPP expression in wild type (WT) and ALPP shRNA knockdown (KD) HeLa cells with 20 µg of total cell lysates. Hsp90 α serves as a loading control. The blot was incubated with anti-ALPP antibody (Cat#AGI1888, 1:5,000) and HRP-conjugated goat anti-rabbit secondary antibody respectively.



Flow cytometric analysis of ALPP expression in HepG2 cells using anti-ALPP antibody (Cat#AGI1888, 1:2,000). Green, isotype control; red, ALPP.



Immunocytochemical staining of HepG2 cells with anti-ALPP antibody (Cat#AGI1888, 1:1,000). Nuclei were stained blue with DAPI; ALPP was stained magenta with Alexa Fluor® 647. Images were taken using Leica stellaris 5. Protein abundance based on laser Intensity and smart gain: Medium. Scale bar: 20 µm.