

KD-Validated Anti-AP3M1 Rabbit Monoclonal Antibody
Rabbit monoclonal antibody
Catalog # AGI1893**Specification****KD-Validated Anti-AP3M1 Rabbit Monoclonal Antibody - Product Information**

Application	WB
Primary Accession	Q9Y2T2
Reactivity	Rat, Human, Mouse
Clonality	Monoclonal
Isotype	Rabbit IgG
Calculated MW	Predicted, 47 kDa, observed, 43 kDa
Gene Name	KDa AP3M1
Aliases	AP3M1; Adaptor Related Protein Complex 3 Subunit Mu 1; Adaptor Related Protein Complex 3 Mu 1 Subunit; AP-3 Complex Subunit Mu-1; Mu-Adaptin 3A; Mu3A-Adaptin; Adapter-Related Protein Complex 3 Mu-1 Subunit; Adaptor-Related Protein Complex 3 Subunit Mu-1; Clathrin Adaptor Complex AP3, Mu-3A Subunit; AP-3 Adapter Complex Mu3A Subunit; AP-3 Adaptor Complex Mu3A Subunit
Immunogen	A synthesized peptide derived from human AP3M1

KD-Validated Anti-AP3M1 Rabbit Monoclonal Antibody - Additional Information

Gene ID	26985
Other Names	
AP-3 complex subunit mu-1, AP-3 adaptor complex mu3A subunit, Adaptor-related protein complex 3 subunit mu-1, Mu-adaptin 3A, Mu3A-adaptin, AP3M1	

KD-Validated Anti-AP3M1 Rabbit Monoclonal Antibody - Protein Information**Name** AP3M1**Function**

Part of the AP-3 complex, an adaptor-related complex which is not clathrin-associated. The complex is associated with the Golgi region as well as more peripheral structures. It facilitates the budding of vesicles from the Golgi membrane and may be directly involved in trafficking to lysosomes. In concert with the BLOC-1 complex, AP-3 is required to target cargos into vesicles assembled at cell bodies for delivery into neurites and nerve terminals.

Cellular Location

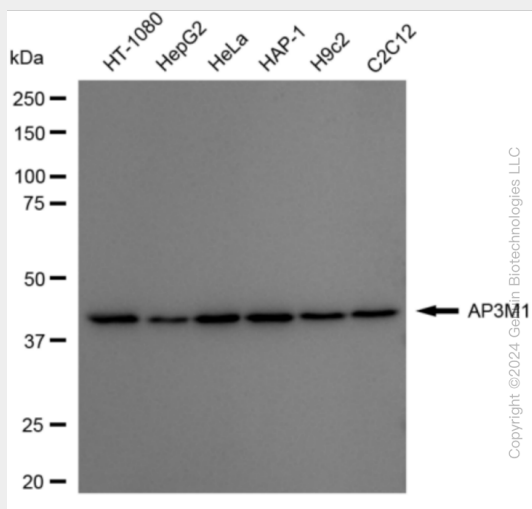
Golgi apparatus. Cytoplasmic vesicle membrane; Peripheral membrane protein; Cytoplasmic side. Note=Component of the coat surrounding the cytoplasmic face of coated vesicles located at the Golgi complex

KD-Validated Anti-AP3M1 Rabbit Monoclonal Antibody - Protocols

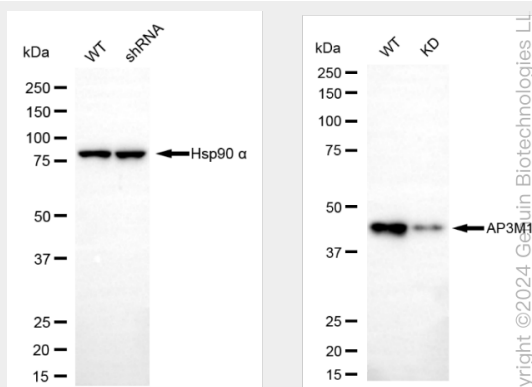
Provided below are standard protocols that you may find useful for product applications.

- [Western Blot](#)
- [Blocking Peptides](#)
- [Dot Blot](#)
- [Immunohistochemistry](#)
- [Immunofluorescence](#)
- [Immunoprecipitation](#)
- [Flow Cytometry](#)
- [Cell Culture](#)

KD-Validated Anti-AP3M1 Rabbit Monoclonal Antibody - Images



Western blotting analysis using anti-AP3M1 antibody (Cat#AGI1893). Total cell lysates (30 µg) from various cell lines were loaded and separated by SDS-PAGE. The blot was incubated with anti-AP3M1 antibody (Cat#AGI1893, 1:5,000) and HRP-conjugated goat anti-rabbit secondary antibody respectively.



Western blotting analysis using anti-AP3M1 antibody (Cat#AGI1893). AP3M1 expression in wild type (WT) and AP3M1 knockdown (KD) HeLa cells with 20 µg of total cell lysates. Hsp90 α serves as a loading control. The blot was incubated with anti-AP3M1 antibody (Cat#AGI1893, 1:5,000) and HRP-conjugated goat anti-Rabbit secondary antibody respectively.