

**KD-Validated Anti-C3orf38 Rabbit Monoclonal Antibody**  
**Rabbit monoclonal antibody**  
**Catalog # AGI1895****Specification**

---

**KD-Validated Anti-C3orf38 Rabbit Monoclonal Antibody - Product Information**

Application	WB
Primary Accession	<a href="#">Q5JPI3</a>
Reactivity	Human
Clonality	Monoclonal
Isotype	Rabbit IgG
Calculated MW	Predicted, 38 kDa, observed, 35 kDa kDa
Gene Name	C3orf38
Aliases	C3orf38; Chromosome 3 Open Reading Frame 38; Uncharacterized Protein C3orf38; Dense Incisors; MGC26717
Immunogen	Recombinant protein of human C3orf38

**KD-Validated Anti-C3orf38 Rabbit Monoclonal Antibody - Additional Information**

Gene ID	285237
<b>Other Names</b>	
Uncharacterized protein C3orf38, C3orf38	

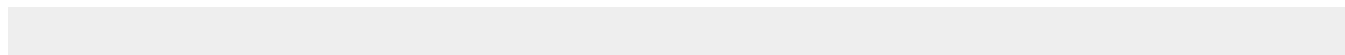
**KD-Validated Anti-C3orf38 Rabbit Monoclonal Antibody - Protein Information****Name** C3orf38**Function**

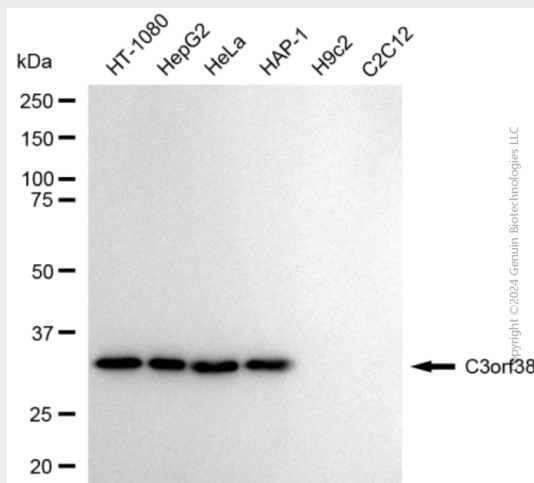
May be involved in apoptosis regulation.

**KD-Validated Anti-C3orf38 Rabbit Monoclonal Antibody - Protocols**

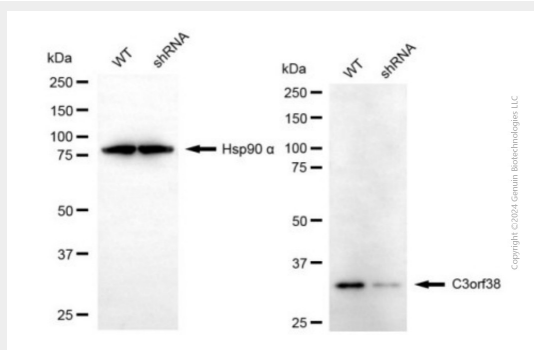
Provided below are standard protocols that you may find useful for product applications.

- [Western Blot](#)
- [Blocking Peptides](#)
- [Dot Blot](#)
- [Immunohistochemistry](#)
- [Immunofluorescence](#)
- [Immunoprecipitation](#)
- [Flow Cytometry](#)
- [Cell Culture](#)

**KD-Validated Anti-C3orf38 Rabbit Monoclonal Antibody - Images**



Western blotting analysis using anti-C3orf38 antibody (Cat#AGI1895). Total cell lysates (30 µg) from various cell lines were loaded and separated by SDS-PAGE. The blot was incubated with anti-C3orf38 antibody (Cat#AGI1895, 1:5,000) and HRP-conjugated goat anti-rabbit secondary antibody respectively.



Western blotting analysis using anti-C3orf38 antibody (Cat#AGI1895). C3orf38 expression in wild type (WT) and C3orf38 shRNA knockdown (KD) HeLa cells with 20 µg of total cell lysates. Hsp90 α serves as a loading control. The blot was incubated with anti-C3orf38 antibody (Cat#AGI1895, 1:5,000) and HRP-conjugated goat anti-rabbit secondary antibody respectively.