

KD-Validated Anti-Cell Division Cycle 123 Mouse Monoclonal Antibody
Mouse monoclonal antibody
Catalog # AGI1912**Specification**

KD-Validated Anti-Cell Division Cycle 123 Mouse Monoclonal Antibody - Product Information

Application	WB, FC
Primary Accession	O75794
Reactivity	Human
Clonality	Monoclonal
Isotype	Mouse IgG2b
Calculated MW	Predicted, 39 kDa, observed, 45 kDa
Gene Name	KDa CDC123
Aliases	CDC123; Cell Division Cycle 123; D123; Cell Division Cycle Protein 123 Homolog; C10orf7; HT-1080; PZ32; Cell Division Cycle 123 Homolog (S. Cerevisiae); Chromosome 10 Open Reading Frame 7; Cell Division Cycle 123 Homolog; Protein D123; C10ORF7
Immunogen	Recombinant protein of human CDC123

KD-Validated Anti-Cell Division Cycle 123 Mouse Monoclonal Antibody - Additional Information

Gene ID	8872
Other Names	
Translation initiation factor eIF2 assembly protein, Cell division cycle protein 123 homolog, Protein D123, HT-1080, PZ32, CDC123, C10orf7, D123	

KD-Validated Anti-Cell Division Cycle 123 Mouse Monoclonal Antibody - Protein Information**Name** CDC123**Synonyms** C10orf7, D123**Function**

ATP-dependent protein-folding chaperone for the eIF2 complex (PubMed:35031321, PubMed:37507029). Binds to the gamma subunit of the eIF2 complex which allows the subunit to assemble with the alpha and beta subunits (By similarity).

Cellular Location

Cytoplasm {ECO:0000250|UniProtKB:Q62834}.

Tissue Location

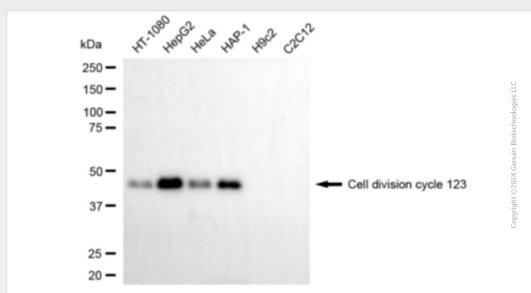
Widely expressed. Expressed in spleen, thymus, prostate, testis, ovary, small intestine, colon and leukocytes with the highest expression in testis.

KD-Validated Anti-Cell Division Cycle 123 Mouse Monoclonal Antibody - Protocols

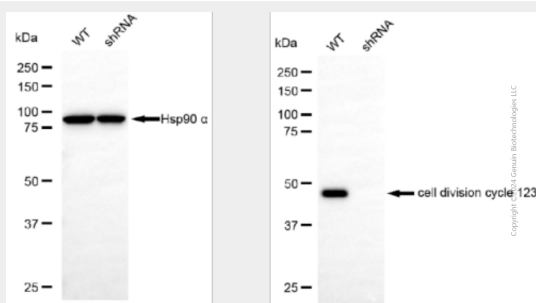
Provided below are standard protocols that you may find useful for product applications.

- [Western Blot](#)
- [Blocking Peptides](#)
- [Dot Blot](#)
- [Immunohistochemistry](#)
- [Immunofluorescence](#)
- [Immunoprecipitation](#)
- [Flow Cytometry](#)
- [Cell Culture](#)

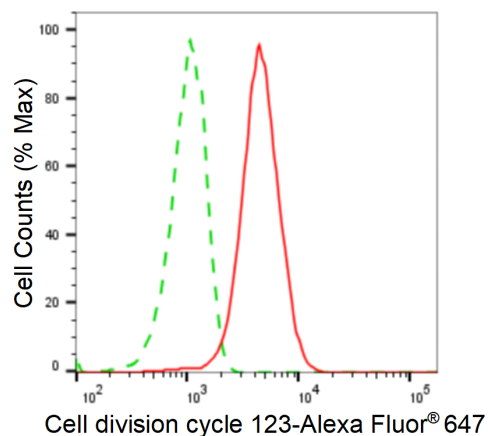
KD-Validated Anti-Cell Division Cycle 123 Mouse Monoclonal Antibody - Images



Western blotting analysis using anti-cell division cycle 123 antibody (Cat#AGI1912). Total cell lysates (30 µg) from various cell lines were loaded and separated by SDS-PAGE. The blot was incubated with anti-cell division cycle 123 antibody (Cat#AGI1912, 1:5,000) and HRP-conjugated goat anti-mouse secondary antibody respectively.



Western blotting analysis using anti-cell division cycle 123 antibody (Cat#AGI1912). Cell division cycle 123 expression in wild type (WT) and cell division cycle 123 (CDC123) shRNA knockdown (KD) HeLa cells with 20 µg of total cell lysates. Hsp90 α serves as a loading control. The blot was incubated with anti-cell division cycle 123 antibody (Cat#AGI1912, 1:5,000) and HRP-conjugated goat anti-mouse secondary antibody respectively.



Flow cytometric analysis of cell division cycle 123 expression in HepG2 cells using anti-cell division cycle 123 antibody (Cat#AGI1912, 1:2,000). Green, isotype control; red, cell division cycle 123.