

KD-Validated Anti-NEFM Mouse Monoclonal Antibody
Mouse monoclonal antibody
Catalog # AGI1923**Specification****KD-Validated Anti-NEFM Mouse Monoclonal Antibody - Product Information**

Application	WB, FC
Primary Accession	P07197
Reactivity	Human
Clonality	Monoclonal
Isotype	Mouse IgG1
Calculated MW	Predicted, 102 kDa, observed, 150 kDa kDa
Gene Name	NEFM
Aliases	NEFM; Neurofilament Medium Chain; NF-M; NFM; NEF3; Neurofilament, Medium Polypeptide 150kDa; Neurofilament Medium Polypeptide; Neurofilament Triplet M Protein; 160 kDa Neurofilament Protein; Neurofilament 3; Neurofilament, Medium Polypeptide; Neurofilament-3 (150 KD Medium); Neurofilament Medium
Immunogen	Recombinant protein of human NEFM

KD-Validated Anti-NEFM Mouse Monoclonal Antibody - Additional Information

Gene ID	4741
Other Names	Neurofilament medium polypeptide, NF-M, 160 kDa neurofilament protein, Neurofilament 3, Neurofilament triplet M protein, NEFM, NEF3, NFM

KD-Validated Anti-NEFM Mouse Monoclonal Antibody - Protein Information**Name** NEFM**Synonyms** NEF3, NFM**Function**

Neurofilaments usually contain three intermediate filament proteins: NEFL, NEFM, and NEFH which are involved in the maintenance of neuronal caliber. May additionally cooperate with the neuronal intermediate filament proteins PRPH and INA to form neuronal filamentous networks (By similarity).

Cellular Location

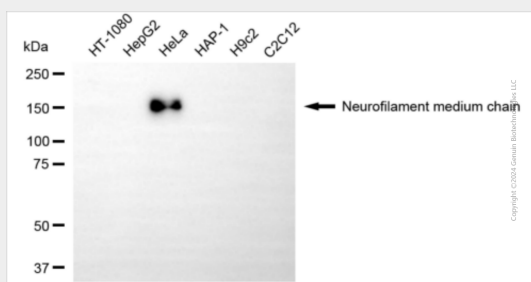
Cytoplasm, cytoskeleton {ECO:0000250|UniProtKB:P08553}. Cell projection, axon {ECO:0000250|UniProtKB:P08553}

KD-Validated Anti-NEFM Mouse Monoclonal Antibody - Protocols

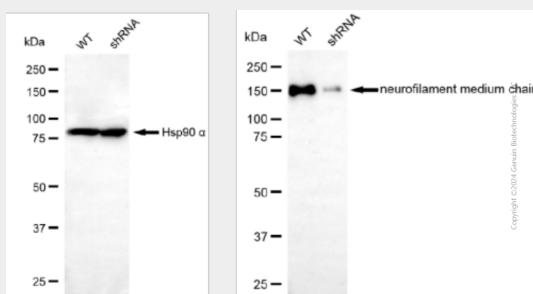
Provided below are standard protocols that you may find useful for product applications.

- [Western Blot](#)
- [Blocking Peptides](#)
- [Dot Blot](#)
- [Immunohistochemistry](#)
- [Immunofluorescence](#)
- [Immunoprecipitation](#)
- [Flow Cytometry](#)
- [Cell Culture](#)

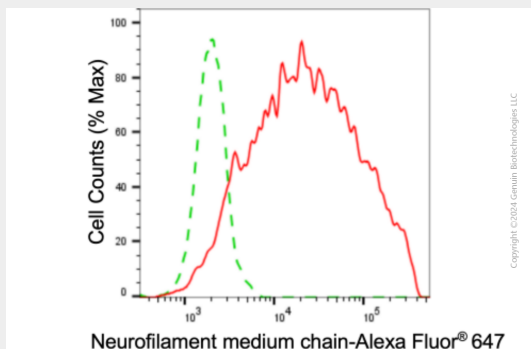
KD-Validated Anti-NEFM Mouse Monoclonal Antibody - Images



Western blotting analysis using anti-neurofilament medium chain antibody (Cat#AGI1923). Total cell lysates (30 µg) from various cell lines were loaded and separated by SDS-PAGE. The blot was incubated with anti-neurofilament medium chain antibody (Cat#AGI1923, 1:5,000) and HRP-conjugated goat anti-mouse secondary antibody respectively.



Western blotting analysis using anti-neurofilament medium chain antibody (Cat#AGI1923). Neurofilament medium chain expression in wild type (WT) and neurofilament medium chain (NEFM) shRNA knockdown (KD) HeLa cells with 20 µg of total cell lysates. Hsp90 α serves as a loading control. The blot was incubated with anti-neurofilament medium chain antibody (Cat#AGI1923, 1:5,000) and HRP-conjugated goat anti-mouse secondary antibody respectively.



Flow cytometric analysis of Neurofilament medium chain expression in HeLa cells using anti-Neurofilament medium chain antibody (Cat#AGI1923, 1:2,000). Green, isotype control; red, Neurofilament medium chain.