

KD-Validated Anti-Annexin A11 Mouse Monoclonal Antibody
Mouse monoclonal antibody
Catalog # AGI1928**Specification**

KD-Validated Anti-Annexin A11 Mouse Monoclonal Antibody - Product Information

Application	WB
Primary Accession	P50995
Reactivity	Rat, Human, Mouse
Clonality	Monoclonal
Isotype	Mouse IgG1
Calculated MW	Predicted, 54 kDa, observed, 50 kDa
Gene Name	KDa ANXA11
Aliases	ANXA11; Annexin A11; Annexin XI; ANX11; Calcyclin-Associated Annexin 50; 56 KDa Autoantigen; Annexin-11; CAP-50; Epididymis Secretory Sperm Binding Protein; IBMWMA; ALS23; CAP50
Immunogen	Recombinant protein of human ANXA11

KD-Validated Anti-Annexin A11 Mouse Monoclonal Antibody - Additional Information

Gene ID	311
Other Names	
Annexin A11, 56 kDa autoantigen, Annexin XI, Annexin-11, Calcyclin-associated annexin 50, CAP-50, ANXA11, ANX11	

KD-Validated Anti-Annexin A11 Mouse Monoclonal Antibody - Protein Information**Name** ANXA11**Synonyms** ANX11**Function**

Binds specifically to calcyclin in a calcium-dependent manner (By similarity). Required for midbody formation and completion of the terminal phase of cytokinesis.

Cellular Location

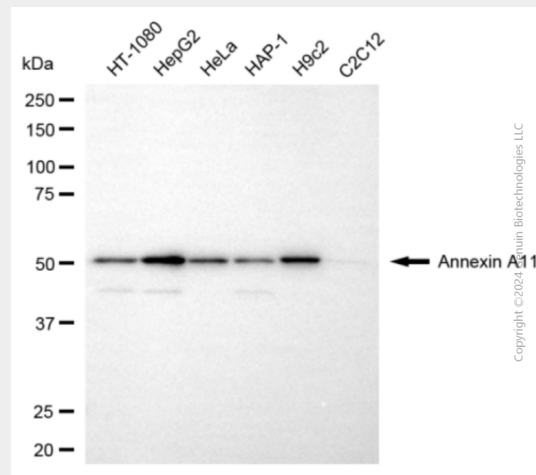
Cytoplasm. Melanosome. Nucleus envelope. Nucleus, nucleoplasm. Cytoplasm, cytoskeleton, spindle Note=Found throughout the nucleoplasm at interphase and during mitosis concentrates around the mitotic apparatus (By similarity). Elevation of intracellular calcium causes relocalization from the nucleoplasm to the nuclear envelope, with little effect on the cytoplasmic pool
Localization to the nuclear envelope is cell-cycle dependent

KD-Validated Anti-Annexin A11 Mouse Monoclonal Antibody - Protocols

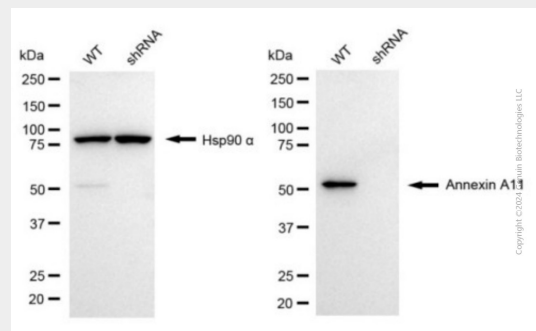
Provided below are standard protocols that you may find useful for product applications.

- [Western Blot](#)
- [Blocking Peptides](#)
- [Dot Blot](#)
- [Immunohistochemistry](#)
- [Immunofluorescence](#)
- [Immunoprecipitation](#)
- [Flow Cytometry](#)
- [Cell Culture](#)

KD-Validated Anti-Annexin A11 Mouse Monoclonal Antibody - Images



Western blotting analysis using anti-annexin A11 antibody (Cat#AGI1928). Total cell lysates (30 µg) from various cell lines were loaded and separated by SDS-PAGE. The blot was incubated with anti-annexin A11 antibody (Cat#AGI1928, 1:2,500) and HRP-conjugated goat anti-mouse secondary antibody respectively.



Western blotting analysis using anti-annexin A11 antibody (Cat#AGI1928). Annexin A11 expression in wild type (WT) and annexin A11 (ANXA11) shRNA knockdown (KD) HeLa cells with 20 µg of total cell lysates. Hsp90 α serves as a loading control. The blot was incubated with anti-annexin A11 antibody (Cat#AGI1928, 1:2,500) and HRP-conjugated goat anti-mouse secondary antibody respectively.