

KD-Validated Anti-Annexin A1 Mouse Monoclonal Antibody
Mouse monoclonal antibody
Catalog # AGI1929**Specification****KD-Validated Anti-Annexin A1 Mouse Monoclonal Antibody - Product Information**

| | |
|-------------------|--|
| Application | WB, FC, ICC |
| Primary Accession | P04083 |
| Reactivity | Rat, Human |
| Clonality | Monoclonal |
| Isotype | Mouse IgG1 |
| Calculated MW | Predicted, 39 kDa, observed, 33 kDa kDa |
| Gene Name | ANXA1 |
| Aliases | ANXA1; Annexin A1; ANX1; LPC1; Phospholipase A2 Inhibitory Protein; Chromobindin-9; Calpactin II; Calpactin-2; Annexin-1; Epididymis Secretory Sperm Binding Protein; Annexin I (Lipocortin I); Lipocortin I; Annexin I; P35 |
| Immunogen | Recombinant protein of human ANXA1 |

KD-Validated Anti-Annexin A1 Mouse Monoclonal Antibody - Additional Information

| | |
|--------------------|--|
| Gene ID | 301 |
| Other Names | Annexin A1, Annexin I, Annexin-1, Calpactin II, Calpactin-2, Chromobindin-9, Lipocortin I, Phospholipase A2 inhibitory protein, p35, Annexin Ac2-26, ANXA1, ANX1, LPC1 |

KD-Validated Anti-Annexin A1 Mouse Monoclonal Antibody - Protein Information**Name** ANXA1**Synonyms** ANX1, LPC1**Function**

Plays important roles in the innate immune response as effector of glucocorticoid-mediated responses and regulator of the inflammatory process. Has anti-inflammatory activity (PubMed: [8425544](http://www.uniprot.org/citations/8425544)). Plays a role in glucocorticoid-mediated down-regulation of the early phase of the inflammatory response (By similarity). Contributes to the adaptive immune response by enhancing signaling cascades that are triggered by T-cell activation, regulates differentiation and proliferation of activated T-cells (PubMed: [17008549](http://www.uniprot.org/citations/17008549)). Promotes the differentiation of T-cells into Th1 cells and negatively regulates differentiation into Th2 cells (PubMed: [17008549](http://www.uniprot.org/citations/17008549)). Has no effect on unstimulated T cells (PubMed: [17008549](http://www.uniprot.org/citations/17008549)). Negatively regulates hormone exocytosis via activation of the formyl peptide receptors and reorganization of the actin cytoskeleton (PubMed: [19625660](http://www.uniprot.org/citations/19625660))

target="_blank">19625660). Has high affinity for Ca(2+) and can bind up to eight Ca(2+) ions (By similarity). Displays Ca(2+)-dependent binding to phospholipid membranes (PubMed:2532504, PubMed:8557678). Plays a role in the formation of phagocytic cups and phagosomes. Plays a role in phagocytosis by mediating the Ca(2+)-dependent interaction between phagosomes and the actin cytoskeleton (By similarity).

Cellular Location

Nucleus. Cytoplasm. Cell projection, cilium {ECO:0000250|UniProtKB:P46193}. Cell membrane. Membrane; Peripheral membrane protein. Endosome membrane {ECO:0000250|UniProtKB:P07150}; Peripheral membrane protein {ECO:0000250|UniProtKB:P07150}. Basolateral cell membrane {ECO:0000250|UniProtKB:P51662}. Apical cell membrane {ECO:0000250|UniProtKB:P10107}. Lateral cell membrane {ECO:0000250|UniProtKB:P10107}. Secreted. Secreted, extracellular space. Cell membrane; Peripheral membrane protein; Extracellular side. Secreted, extracellular exosome. Cytoplasmic vesicle, secretory vesicle lumen. Cell projection, phagocytic cup {ECO:0000250|UniProtKB:P10107}. Early endosome {ECO:0000250|UniProtKB:P19619}. Cytoplasmic vesicle membrane {ECO:0000250|UniProtKB:P19619}; Peripheral membrane protein {ECO:0000250|UniProtKB:P19619}. Note=Secreted, at least in part via exosomes and other secretory vesicles. Detected in exosomes and other extracellular vesicles (PubMed:25664854). Alternatively, the secretion is dependent on protein unfolding and facilitated by the cargo receptor TMED10; it results in the protein translocation from the cytoplasm into ERGIC (endoplasmic reticulum-Golgi intermediate compartment) followed by vesicle entry and secretion (PubMed:32272059). Detected in gelatinase granules in resting neutrophils (PubMed:10772777). Secretion is increased in response to wounding and inflammation (PubMed:25664854). Secretion is increased upon T-cell activation (PubMed:17008549). Neutrophil adhesion to endothelial cells stimulates secretion via gelatinase granules, but foreign particle phagocytosis has no effect (PubMed:10772777). Colocalizes with actin fibers at phagocytic cups (By similarity). Displays calcium-dependent binding to phospholipid membranes (PubMed:2532504, PubMed:8557678) {ECO:0000250|UniProtKB:P10107, ECO:0000269|PubMed:10772777, ECO:0000269|PubMed:17008549, ECO:0000269|PubMed:2532504, ECO:0000269|PubMed:25664854, ECO:0000269|PubMed:32272059, ECO:0000269|PubMed:8557678}

Tissue Location

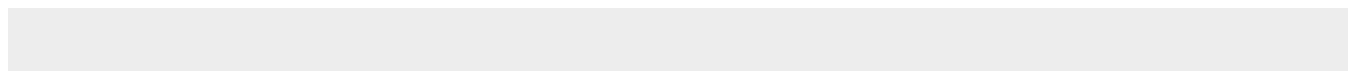
Detected in resting neutrophils (PubMed:10772777). Detected in peripheral blood T-cells (PubMed:17008549). Detected in extracellular vesicles in blood serum from patients with inflammatory bowel disease, but not in serum from healthy donors (PubMed:25664854) Detected in placenta (at protein level) (PubMed:2532504). Detected in liver.

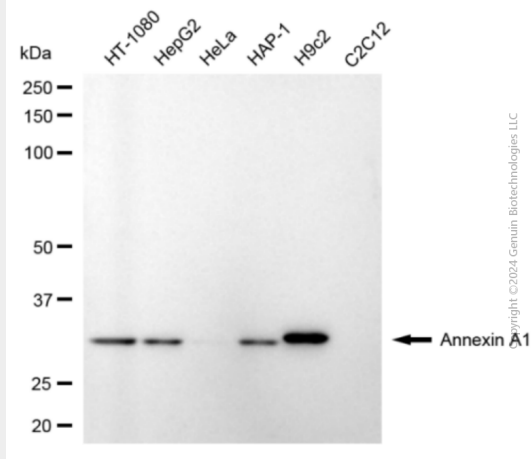
KD-Validated Anti-Annexin A1 Mouse Monoclonal Antibody - Protocols

Provided below are standard protocols that you may find useful for product applications.

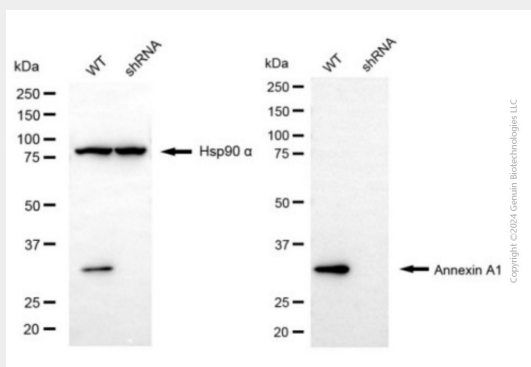
- [Western Blot](#)
- [Blocking Peptides](#)
- [Dot Blot](#)
- [Immunohistochemistry](#)
- [Immunofluorescence](#)
- [Immunoprecipitation](#)
- [Flow Cytometry](#)
- [Cell Culture](#)

KD-Validated Anti-Annexin A1 Mouse Monoclonal Antibody - Images

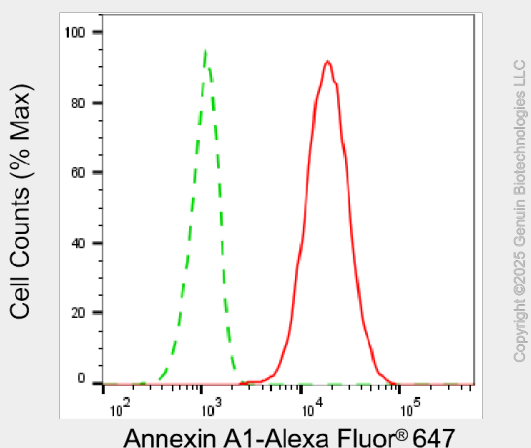




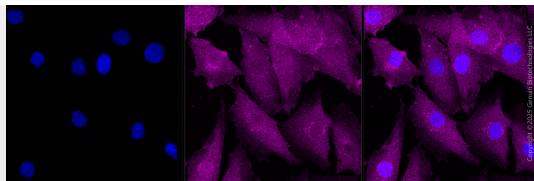
Western blotting analysis using anti-annexin A1 antibody (Cat#AGI1929). Total cell lysates (30 µg) from various cell lines were loaded and separated by SDS-PAGE. The blot was incubated with anti-annexin A1 antibody (Cat#AGI1929, 1:5,000) and HRP-conjugated goat anti-mouse secondary antibody respectively.



Western blotting analysis using anti-annexin A1 antibody (Cat#AGI1929). Annexin A1 expression in wild type (WT) and annexin A1 (ANXA1) shRNA knockdown (KD) HeLa cells with 20 µg of total cell lysates. Hsp90 α serves as a loading control. The blot was incubated with anti-annexin A1 antibody (Cat#AGI1929, 1:5,000) and HRP-conjugated goat anti-mouse secondary antibody respectively.



Flow cytometric analysis of Annexin A1 expression in H9c2 cells using anti-Annexin A1 antibody (Cat#AGI1929, 1:2,000). Green, isotype control; red, Annexin A1.



Immunocytochemical staining of H9C2 cells with anti-Annexin A1 antibody (Cat#AGI1929, 1:1,000). Nuclei were stained blue with DAPI; Annexin A1 was stained magenta with Alexa Fluor® 647. Images were taken using Leica stellaris 5. Protein abundance based on laser Intensity and smart gain□Medium. Scale bar, 20 μ m.