

**KD-Validated Anti-Latexin Mouse Monoclonal Antibody**  
**Mouse monoclonal antibody**  
**Catalog # AGI1935****Specification**

---

**KD-Validated Anti-Latexin Mouse Monoclonal Antibody - Product Information**

Application	WB, FC
Primary Accession	<a href="#">Q9BS40</a>
Reactivity	Rat, Human
Clonality	Monoclonal
Isotype	Mouse IgG1
Calculated MW	Predicted, 26 kDa, observed, 26 kDa kDa
Gene Name	LXN
Aliases	LXN; Latexin; Endogenous Carboxypeptidase Inhibitor; Tissue Carboxypeptidase Inhibitor; ECI; TCI; Protein MUM; MUM
Immunogen	Recombinant protein of human LXN

**KD-Validated Anti-Latexin Mouse Monoclonal Antibody - Additional Information**

Gene ID	56925
<b>Other Names</b>	
Latexin, Endogenous carboxypeptidase inhibitor, ECI, Protein MUM, Tissue carboxypeptidase inhibitor, TCI, LXN	

**KD-Validated Anti-Latexin Mouse Monoclonal Antibody - Protein Information****Name** LXN**Function**

Hardly reversible, non-competitive, and potent inhibitor of CPA1, CPA2 and CPA4. May play a role in inflammation.

**Cellular Location**

Cytoplasm.

**Tissue Location**

Highly expressed in heart, prostate, ovary, kidney, pancreas, and colon, moderate or low in other tissues including brain

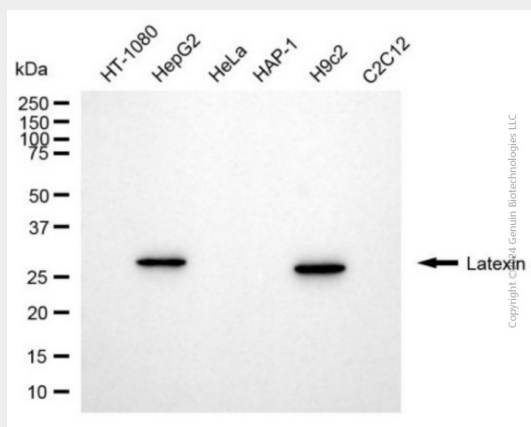
**KD-Validated Anti-Latexin Mouse Monoclonal Antibody - Protocols**

Provided below are standard protocols that you may find useful for product applications.

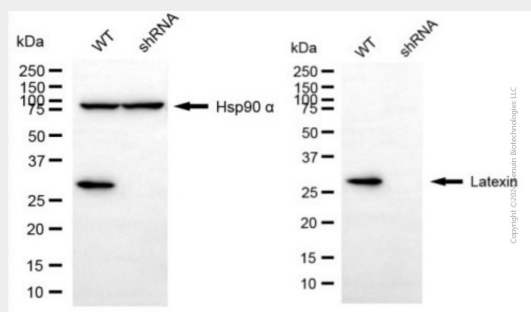
- [Western Blot](#)

- [Blocking Peptides](#)
- [Dot Blot](#)
- [Immunohistochemistry](#)
- [Immunofluorescence](#)
- [Immunoprecipitation](#)
- [Flow Cytometry](#)
- [Cell Culture](#)

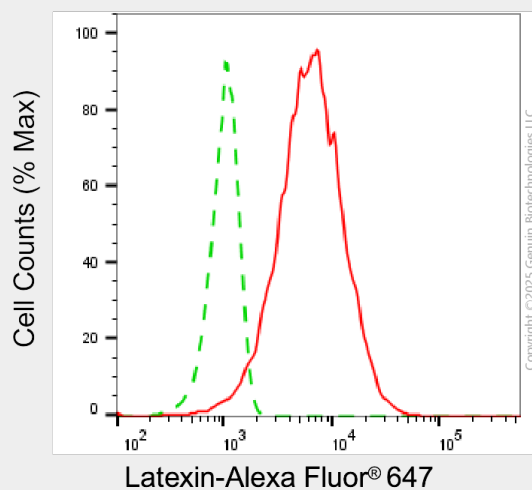
## KD-Validated Anti-Latexin Mouse Monoclonal Antibody - Images



Western blotting analysis using anti-latexin antibody (Cat#63529). Total cell lysates (30 µg) from various cell lines were loaded and separated by SDS-PAGE. The blot was incubated with anti-latexin antibody (Cat#63529, 1:5,000) and HRP-conjugated goat anti-mouse secondary antibody (Cat#101, 1:20,000) respectively. Image was developed using NaQ™ ECL Substrate Kit (Cat#716).



Western blotting analysis using anti-latexin antibody (Cat#63529). Latexin expression in wild type (WT) and latexin (LXN) shRNA knockdown (KD) HeLa cells with 20 µg of total cell lysates. Hsp90 α serves as a loading control. The blot was incubated with anti-latexin antibody (Cat#63529, 1:5,000) and HRP-conjugated goat anti-mouse secondary antibody (Cat#101, 1:20,000) respectively. Image was developed using FeQ™ ECL Substrate Kit (Cat#226).



Flow cytometric analysis of Latexin expression in HepG2 cells using anti-Latexin antibody (Cat#63529, 1:2,000). Green, isotype control; red, Latexin.