

**KD-Validated Anti-PFKP Mouse Monoclonal Antibody**  
**Mouse monoclonal antibody**  
**Catalog # AGI1937****Specification****KD-Validated Anti-PFKP Mouse Monoclonal Antibody - Product Information**

Application	WB, FC, ICC
Primary Accession	<a href="#">Q01813</a>
Reactivity	Human
Clonality	Monoclonal
Isotype	Mouse IgG1
Calculated MW	Predicted, 86 kDa, observed, 75 kDa kDa
Gene Name	PFKP
Aliases	PFKP; Phosphofructokinase, Platelet; PFK-C; PFKF; ATP-Dependent 6-Phosphofructokinase, Platelet Type; Phosphofructo-1-Kinase Isozyme C; 6-Phosphofructokinase Type C; Phosphohexokinase; EC 2.7.1.11; ATP-PFK; PFK-P; 6-Phosphofructokinase, Platelet Type; Phosphofructokinase, Platelet Type; Phosphofructokinase 1; EC 2.7.1
Immunogen	Recombinant protein of human PFKP

**KD-Validated Anti-PFKP Mouse Monoclonal Antibody - Additional Information**

Gene ID	5214
<b>Other Names</b>	
ATP-dependent 6-phosphofructokinase, platelet type {ECO:0000255 HAMAP-Rule:MF_03184}, ATP-PFK {ECO:0000255 HAMAP-Rule:MF_03184}, PFK-P, 2.7.1.11 {ECO:0000255 HAMAP-Rule:MF_03184}, 6-phosphofructokinase type C, Phosphofructo-1-kinase isozyme C, PFK-C, Phosphohexokinase {ECO:0000255 HAMAP-Rule:MF_03184}, PFKP, PFKF	

**KD-Validated Anti-PFKP Mouse Monoclonal Antibody - Protein Information****Name** PFKP**Synonyms** PFKF**Function**

Catalyzes the phosphorylation of D-fructose 6-phosphate to fructose 1,6-bisphosphate by ATP, the first committing step of glycolysis.

**Cellular Location**

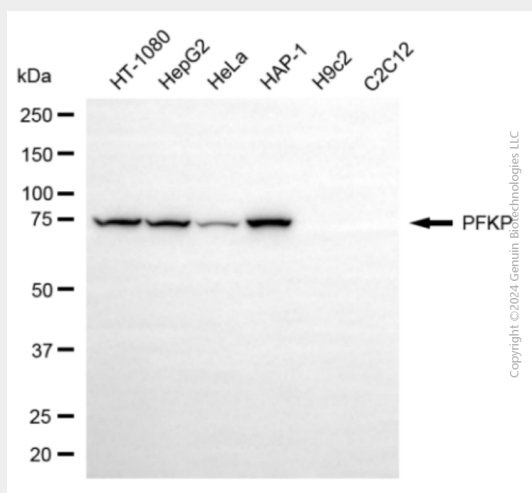
Cytoplasm {ECO:0000255|HAMAP-Rule:MF\_03184}.

## KD-Validated Anti-PFKP Mouse Monoclonal Antibody - Protocols

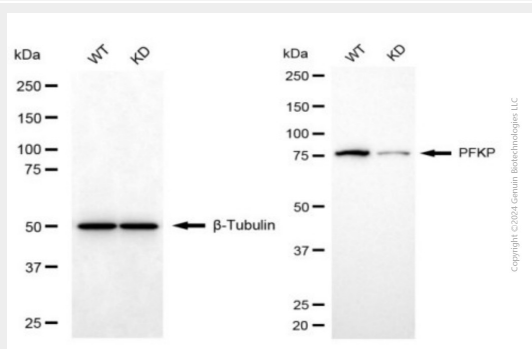
Provided below are standard protocols that you may find useful for product applications.

- [Western Blot](#)
- [Blocking Peptides](#)
- [Dot Blot](#)
- [Immunohistochemistry](#)
- [Immunofluorescence](#)
- [Immunoprecipitation](#)
- [Flow Cytometry](#)
- [Cell Culture](#)

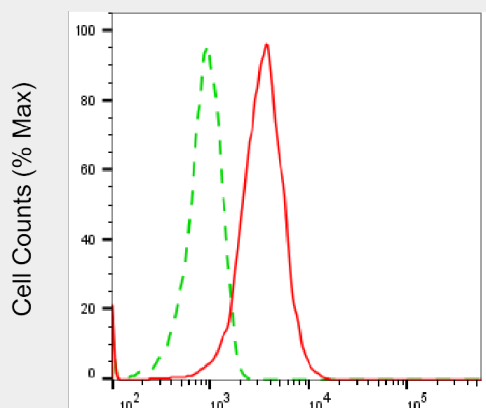
## KD-Validated Anti-PFKP Mouse Monoclonal Antibody - Images



Western blotting analysis using anti-PFKP antibody (Cat#AGI1937). Total cell lysates (30 µg) from various cell lines were loaded and separated by SDS-PAGE. The blot was incubated with anti-PFKP antibody (Cat#AGI1937, 1:5,000) and HRP-conjugated goat anti-mouse secondary antibody respectively.



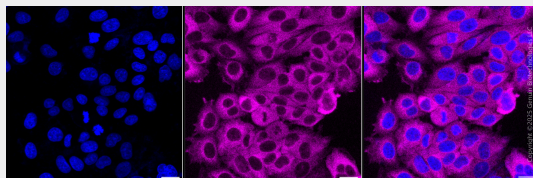
Western blotting analysis using anti-PFKP antibody (Cat#AGI1937). PFKP expression in wild type (WT) and PFKP knockdown (KD) HSHC cells with 20 µg of total cell lysates. β-Tubulin serves as a loading control. The blot was incubated with anti-PFKP antibody (Cat#AGI1937, 1:5,000) and HRP-conjugated goat anti-mouse secondary antibody respectively.



Copyright ©2025 Genuin Biotechnologies LLC

PFKP-Alexa Fluor® 647

Flow cytometric analysis of PFKP expression in HepG2 cells using anti-PFKP antibody (Cat#AGI1937, 1:2,000). Green, isotype control; red, PFKP.



Immunocytochemical staining of HepG2 cells with anti-PFKP antibody (Cat#AGI1937, 1:1,000). Nuclei were stained blue with DAPI; PFKP was stained magenta with Alexa Fluor® 647. Images were taken using Leica stellaris 5. Protein abundance based on laser Intensity and Smart Gain□Medium. Scale bar, 20 μm.