

KD-Validated Anti-Calpastatin Mouse Monoclonal Antibody
Mouse monoclonal antibody
Catalog # AGI1940**Specification**

KD-Validated Anti-Calpastatin Mouse Monoclonal Antibody - Product Information

Application	WB
Primary Accession	P20810
Reactivity	Human
Clonality	Monoclonal
Isotype	Mouse IgG1
Calculated MW	Predicted, 77 kDa, observed, 120 kDa KDa
Gene Name	CAST
Aliases	CAST; Calpastatin; Sperm BS-17 Component; Calpain Inhibitor; MIR583HG; MIR583 Host Gene; NONHSAG041072.2; NONHSAG041079.2; NONHSAG041069.2; NONHSAG041075.2; NONHSAG041074.2; HSALNG0043632; HSALNG0148668; HSALNG0043636; HSALNG0043640; HSALNG0037602; HSALNG0043637; MIR583 Host; Lnc-CAST-10; Lnc-CAST-3; BS-17; PLACK
Immunogen	Recombinant protein of human CAST

KD-Validated Anti-Calpastatin Mouse Monoclonal Antibody - Additional Information

Gene ID	831
Other Names	
Calpastatin, Calpain inhibitor, Sperm BS-17 component, CAST	

KD-Validated Anti-Calpastatin Mouse Monoclonal Antibody - Protein Information**Name** CAST**Function**

Specific inhibition of calpain (calcium-dependent cysteine protease). Plays a key role in postmortem tenderization of meat and have been proposed to be involved in muscle protein degradation in living tissue.

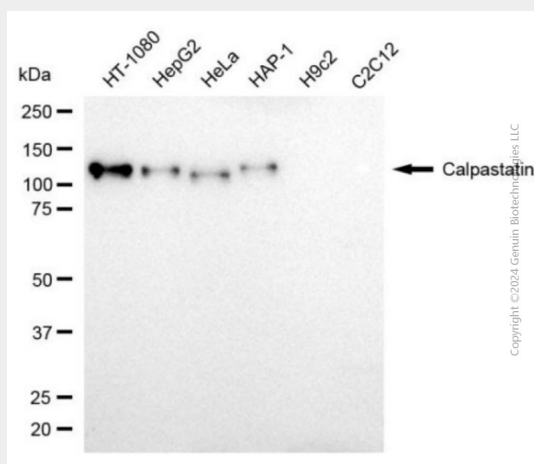
KD-Validated Anti-Calpastatin Mouse Monoclonal Antibody - Protocols

Provided below are standard protocols that you may find useful for product applications.

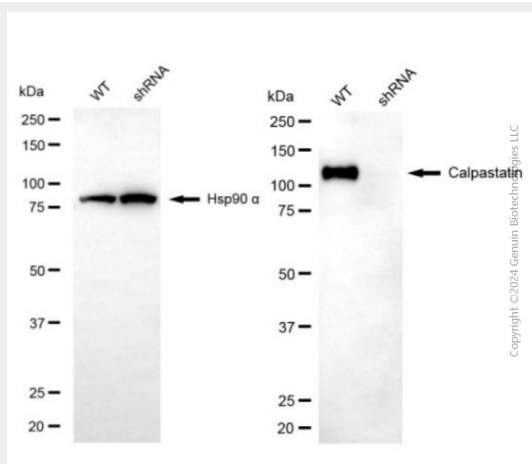
- [Western Blot](#)
- [Blocking Peptides](#)

- [Dot Blot](#)
- [Immunohistochemistry](#)
- [Immunofluorescence](#)
- [Immunoprecipitation](#)
- [Flow Cytometry](#)
- [Cell Culture](#)

KD-Validated Anti-Calpastatin Mouse Monoclonal Antibody - Images



Western blotting analysis using anti-calpastatin antibody (Cat#63547). Total cell lysates (30 µg) from various cell lines were loaded and separated by SDS-PAGE. The blot was incubated with anti-calpastatin antibody (Cat#63547, 1:5,000) and HRP-conjugated goat anti-mouse secondary antibody (Cat#101, 1:20,000) respectively. Image was developed using FeQ™ ECL Substrate Kit (Cat#226).



Western blotting analysis using anti-calpastatin antibody (Cat#63547). Calpastatin expression in wild type (WT) and calpastatin (CAST) shRNA knockdown (KD) HeLa cells with 20 µg of total cell lysates. Hsp90 α serves as a loading control. The blot was incubated with anti-calpastatin antibody (Cat#63547, 1:5,000) and HRP-conjugated goat anti-mouse secondary antibody (Cat#101, 1:20,000) respectively. Image was developed using FeQ™ ECL Substrate Kit (Cat#226).