

KD-Validated Anti-CDCA8 Mouse Monoclonal Antibody
Mouse monoclonal antibody
Catalog # AGI1951**Specification****KD-Validated Anti-CDCA8 Mouse Monoclonal Antibody - Product Information**

Application	WB, FC, ICC
Primary Accession	Q53HL2
Reactivity	Human
Clonality	Monoclonal
Isotype	Mouse IgG1
Calculated MW	Predicted, 31 kDa, observed, 31 kDa kDa
Gene Name	CDCA8
Aliases	CDCA8; Cell Division Cycle Associated 8; Borealin; MESRGP; DasraB; BOR; Pluripotent Embryonic Stem Cell-Related Gene 3 Protein; Cell Division Cycle-Associated Protein 8; FLJ12042; HDasra-B; Dasra-B; Dasra B; PESCRG3
Immunogen	Recombinant protein of human CDCA8

KD-Validated Anti-CDCA8 Mouse Monoclonal Antibody - Additional Information

Gene ID	55143
Other Names	
Borealin, Cell division cycle-associated protein 8, Dasra-B, hDasra-B, Pluripotent embryonic stem cell-related gene 3 protein, CDCA8, PESCRG3	

KD-Validated Anti-CDCA8 Mouse Monoclonal Antibody - Protein Information**Name** CDCA8**Synonyms** PESCRG3**Function**

Component of the chromosomal passenger complex (CPC), a complex that acts as a key regulator of mitosis. The CPC complex has essential functions at the centromere in ensuring correct chromosome alignment and segregation and is required for chromatin-induced microtubule stabilization and spindle assembly. Major effector of the TTK kinase in the control of attachment-error-correction and chromosome alignment.

Cellular Location

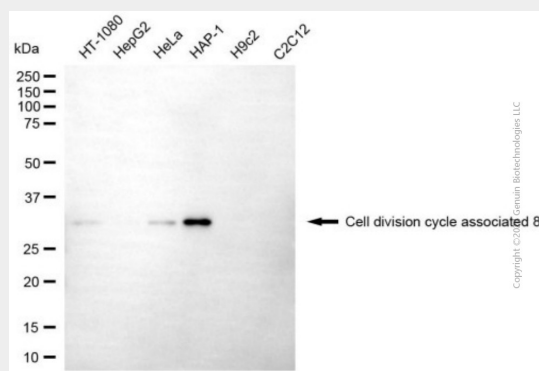
Nucleus, nucleolus. Cytoplasm. Cytoplasm, cytoskeleton, spindle. Chromosome, centromere. Note=Localizes on chromosome arms and inner centromeres from prophase through metaphase and then transferring to the spindle midzone and midbody from anaphase through cytokinesis. Colocalizes with SENP3 in the nucleolus in interphase cells.

KD-Validated Anti-CDCA8 Mouse Monoclonal Antibody - Protocols

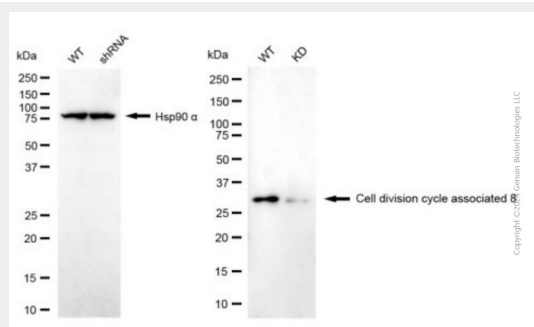
Provided below are standard protocols that you may find useful for product applications.

- [Western Blot](#)
- [Blocking Peptides](#)
- [Dot Blot](#)
- [Immunohistochemistry](#)
- [Immunofluorescence](#)
- [Immunoprecipitation](#)
- [Flow Cytometry](#)
- [Cell Culture](#)

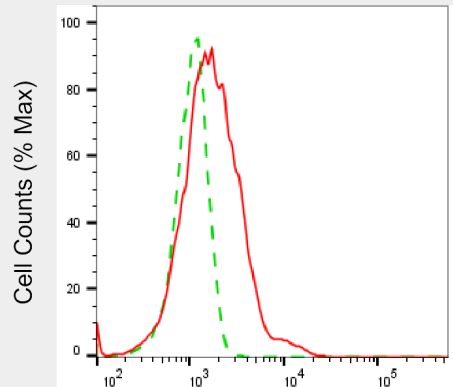
KD-Validated Anti-CDCA8 Mouse Monoclonal Antibody - Images



Western blotting analysis using anti-cell division cycle associated 8 antibody (Cat#AGI1951). Total cell lysates (30 µg) from various cell lines were loaded and separated by SDS-PAGE. The blot was incubated with anti-cell division cycle associated 8 antibody (Cat#AGI1951, 1:5,000) and HRP-conjugated goat anti-mouse secondary antibody respectively.

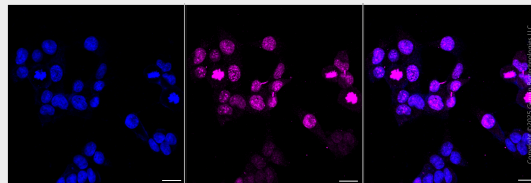


Western blotting analysis using anti-cell division cycle associated 8 antibody (Cat#AGI1951). Cell division cycle associated 8 expression in wild type (WT) and cell division cycle associated 8 (CDCA8) knockdown (KD) HSHC cells with 20 µg of total cell lysates. Hsp90 α serves as a loading control. The blot was incubated with anti-cell division cycle associated 8 antibody (Cat#AGI1951, 1:5,000) and HRP-conjugated goat anti-mouse secondary antibody respectively.



Cell division cycle associated 8-Alexa Fluor® 647

Flow cytometric analysis of Cell division cycle associated 8 expression in HAP-1 cells using anti-Cell division cycle associated 8 antibody (Cat#AGI1951, 1:2,000). Green, isotype control; red, Cell division cycle associated 8.



Immunocytochemical staining of HAP-1 cells with Cell division cycle associated 8 antibody (Cat#AGI1951, 1:1,000). Nuclei were stained blue with DAPI; Cell division cycle associated 8 was stained magenta with Alexa Fluor® 647. Images were taken using Leica stellaris 5. Protein abundance based on laser Intensity and smart gain: Medium. Scale bar, 20 μ m.