

KD-Validated Anti-SRSF9 Mouse Monoclonal Antibody
Mouse monoclonal antibody
Catalog # AGI1953**Specification****KD-Validated Anti-SRSF9 Mouse Monoclonal Antibody - Product Information**

Application	WB, FC, ICC
Primary Accession	Q13242
Reactivity	Rat, Human, Mouse
Clonality	Monoclonal
Isotype	Mouse IgG2b
Calculated MW	Predicted, 26 kDa, observed, 26 kDa kDa
Gene Name	SRSF9
Aliases	SRSF9; Serine And Arginine Rich Splicing Factor 9; Splicing Factor, Arginine/Serine-Rich 9; Serine/Arginine-Rich Splicing Factor 9; SRp30c; SFRS9; Pre-mRNA-Splicing Factor SRp30C; SR Splicing Factor 9; SRP30C
Immunogen	Recombinant protein of human SRSF9

KD-Validated Anti-SRSF9 Mouse Monoclonal Antibody - Additional Information

Gene ID	8683
Other Names	Serine/arginine-rich splicing factor 9, Pre-mRNA-splicing factor SRp30C, Splicing factor, arginine/serine-rich 9, SRSF9, SFRS9, SRP30C

KD-Validated Anti-SRSF9 Mouse Monoclonal Antibody - Protein Information**Name** SRSF9**Synonyms** SFRS9, SRP30C**Function**

Plays a role in constitutive splicing and can modulate the selection of alternative splice sites. Represses the splicing of MAPT/Tau exon 10.

Cellular Location

Nucleus. Note=Cellular stresses such as heat shock may induce localization to discrete nuclear bodies termed SAM68 nuclear bodies (SNBs), HAP bodies, or stress bodies. Numerous splicing factors including SRSF1/SFRS1/SF2, SRSF7/SFRS7, SAFB and KHDRBS1/SAM68 accumulate at these structures, which may participate in the post- transcriptional regulation of mRNAs in stressed cells

Tissue Location

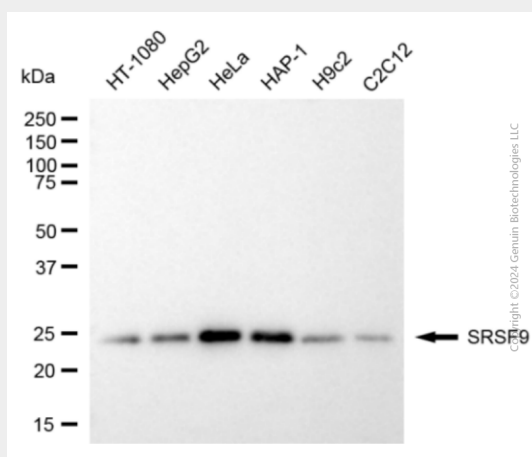
Expressed at high levels in the heart, kidney, pancreas and placenta, and at lower levels in the brain, liver, lung and skeletal muscle.

KD-Validated Anti-SRSF9 Mouse Monoclonal Antibody - Protocols

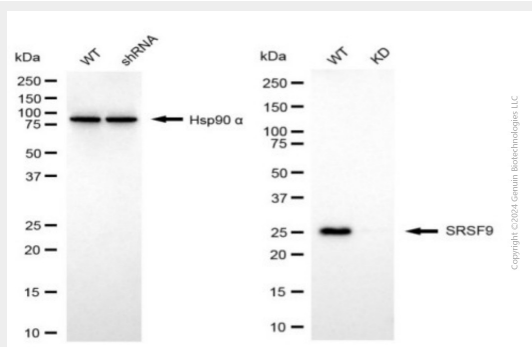
Provided below are standard protocols that you may find useful for product applications.

- [Western Blot](#)
- [Blocking Peptides](#)
- [Dot Blot](#)
- [Immunohistochemistry](#)
- [Immunofluorescence](#)
- [Immunoprecipitation](#)
- [Flow Cytometry](#)
- [Cell Culture](#)

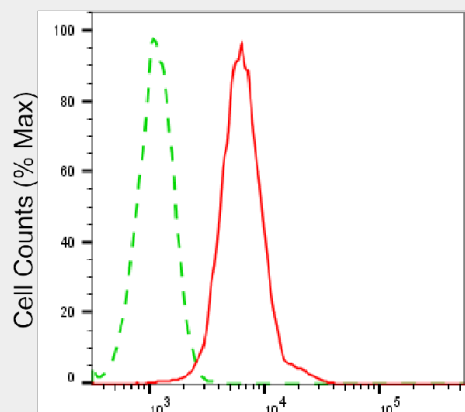
KD-Validated Anti-SRSF9 Mouse Monoclonal Antibody - Images



Western blotting analysis using anti-SRSF9 antibody (Cat#63578). Total cell lysates (30 µg) from various cell lines were loaded and separated by SDS-PAGE. The blot was incubated with anti-SRSF9 antibody (Cat#63578, 1:5,000) and HRP-conjugated goat anti-mouse secondary antibody (Cat#101, 1:20,000) respectively. Image was developed using NaQ™ ECL Substrate Kit (Cat#716).



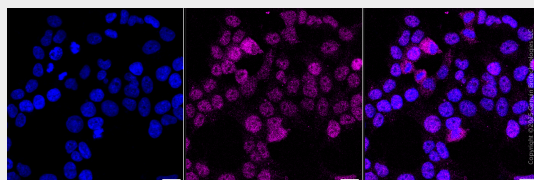
Western blotting analysis using anti-SRSF9 antibody (Cat#63578). SRSF9 expression in wild type (WT) and SRSF9 knockdown (KD) HSHC cells with 20 µg of total cell lysates. Hsp90 α serves as a loading control. The blot was incubated with anti-SRSF9 antibody (Cat#63578, 1:5,000) and HRP-conjugated goat anti-mouse secondary antibody (Cat#101, 1:20,000) respectively. Image was developed using NaQ™ ECL Substrate Kit (Cat#716).



Copyright ©2025 Genuin Biotechnologies LLC

SRSF9-Alexa Fluor® 647

Flow cytometric analysis of SRSF9 expression in HeLa cells using anti-SRSF9 antibody (Cat#63578, 1:2,000). Green, isotype control; red, SRSF9.



Immunocytochemical staining of HeLa cells with anti-SRSF9 antibody (Cat#63578, 1:1,000). Nuclei were stained blue with DAPI; SRSF9 was stained magenta with Alexa Fluor® 647. Images were taken using Leica stellaris 5. Protein abundance based on laser Intensity and Smart Gain□Low. Scale bar, 20 μm.