

KD-Validated Anti-GRHPR mouse monoclonal antibody
Mouse monoclonal antibody
Catalog # AGI1964**Specification**

KD-Validated Anti-GRHPR mouse monoclonal antibody - Product Information

Application	WB
Primary Accession	Q9UBQ7
Reactivity	Human, Mouse
Clonality	Monoclonal
Isotype	Mouse IgG1
Calculated MW	Predicted, 36 kDa, observed, 36 kDa kDa
Gene Name	GRHPR
Aliases	GRHPR; Glyoxylate And Hydroxypyruvate Reductase; Glyoxylate Reductase/Hydroxypyruvate Reductase; GLXR; PH2; Glyoxylate Reductase And Hydroxypyruvate Reductase; Epididymis Secretory Sperm Binding Protein; Primary Hyperoxaluria Type 2; Glycerate-2-Dehydrogenase; EC 1.1.1.79; EC 1.1.1.81; GLYD
Immunogen	Recombinant protein of human GRHPR

KD-Validated Anti-GRHPR mouse monoclonal antibody - Additional Information

Gene ID	9380
Other Names	
Glyoxylate reductase/hydroxypyruvate reductase, 1.1.1.79, 1.1.1.81, GRHPR, GLXR	

KD-Validated Anti-GRHPR mouse monoclonal antibody - Protein Information**Name** GRHPR**Synonyms** GLXR**Function**

Enzyme with hydroxy-pyruvate reductase, glyoxylate reductase and D-glycerate dehydrogenase enzymatic activities. Reduces hydroxypyruvate to D-glycerate, glyoxylate to glycolate, oxidizes D-glycerate to hydroxypyruvate.

Tissue Location

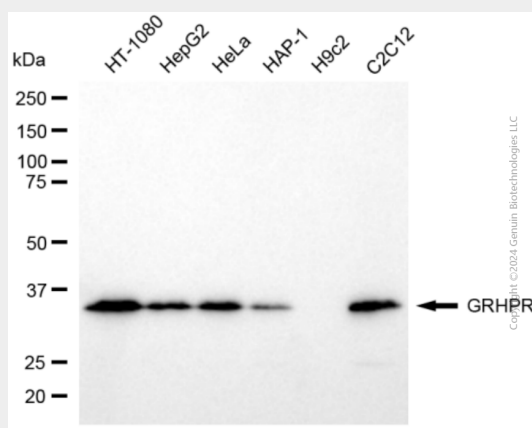
Ubiquitous. Most abundantly expressed in the liver.

KD-Validated Anti-GRHPR mouse monoclonal antibody - Protocols

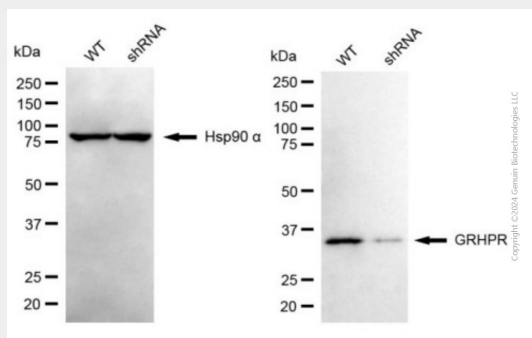
Provided below are standard protocols that you may find useful for product applications.

- [Western Blot](#)
- [Blocking Peptides](#)
- [Dot Blot](#)
- [Immunohistochemistry](#)
- [Immunofluorescence](#)
- [Immunoprecipitation](#)
- [Flow Cytometry](#)
- [Cell Culture](#)

KD-Validated Anti-GRHPR mouse monoclonal antibody - Images



Western blotting analysis using anti-GRHPR antibody (Cat#AGI1964). Total cell lysates (30 µg) from various cell lines were loaded and separated by SDS-PAGE. The blot was incubated with anti-GRHPR antibody (Cat#AGI1964, 1:2,500) and HRP-conjugated goat anti-mouse secondary antibody respectively.



Western blotting analysis using anti-GRHPR antibody (Cat#AGI1964). GRHPR expression in wild type (WT) and GRHPR shRNA knockdown (KD) HSHC cells with 20 µg of total cell lysates. Hsp90 α serves as a loading control. The blot was incubated with anti-GRHPR antibody (Cat#AGI1964, 1:2,500) and HRP-conjugated goat anti-mouse secondary antibody respectively.