

KD-Validated Anti-LTBR mouse monoclonal antibody
Mouse monoclonal antibody
Catalog # AGI1967**Specification****KD-Validated Anti-LTBR mouse monoclonal antibody - Product Information**

Application	WB, ICC
Primary Accession	P36941
Reactivity	Rat, Human, Mouse
Clonality	Monoclonal
Isotype	Mouse IgG1
Calculated MW	Predicted, 47 kDa, observed, 36 kDa kDa
Gene Name	LTBR
Aliases	LTBR; Lymphotoxin Beta Receptor; TNFRSF3; TNFCR; TNF-R-III; TNFR2-RP; TNFR-RP; D12S370; Tumor Necrosis Factor Receptor Superfamily Member 3; Tumor Necrosis Factor Receptor 2-Related Protein; Tumor Necrosis Factor Receptor Type III; Tumor Necrosis Factor C Receptor; TNFR3; Lymphotoxin Beta Receptor (TNFR Superfamily, Member 3); TNFR Superfamily, Member 3; Lymphotoxin-Beta Receptor; Lymphotoxin B Receptor; LT-BETA-R; TNF-RIII; TNFR-III
Immunogen	Recombinant protein of human LTBR

KD-Validated Anti-LTBR mouse monoclonal antibody - Additional Information

Gene ID 4055

Other Names

Tumor necrosis factor receptor superfamily member 3, Lymphotoxin-beta receptor, Tumor necrosis factor C receptor, Tumor necrosis factor receptor 2-related protein, Tumor necrosis factor receptor type III, TNF-RIII, TNFR-III, LTBR, D12S370, TNFCR, TNFR3, TNFRSF3

KD-Validated Anti-LTBR mouse monoclonal antibody - Protein Information**Name** LTBR**Synonyms** D12S370, TNFCR, TNFR3, TNFRSF3**Function**

Receptor for the heterotrimeric lymphotoxin containing LTA and LTB, and for TNFS14/LIGHT (PubMed:24248355). Activates NF-kappa-B signaling pathway upon stimulation with lymphotoxin (LTA(1)-LTB(2)) (PubMed:24248355). Promotes apoptosis via TRAF3 and TRAF5. May play a role in the development of lymphoid organs.

Cellular Location

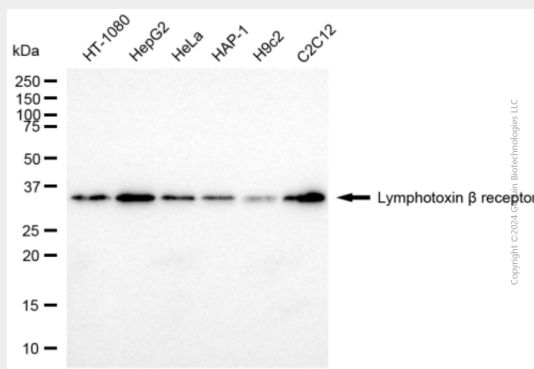
Membrane; Single-pass type I membrane protein.

KD-Validated Anti-LTBR mouse monoclonal antibody - Protocols

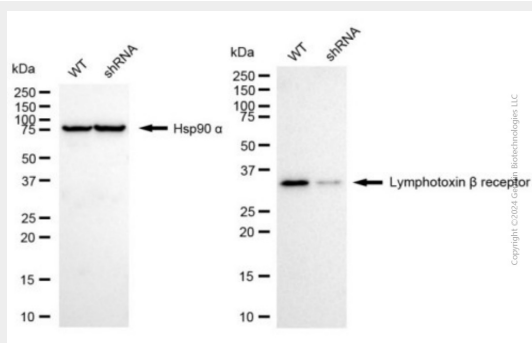
Provided below are standard protocols that you may find useful for product applications.

- [Western Blot](#)
- [Blocking Peptides](#)
- [Dot Blot](#)
- [Immunohistochemistry](#)
- [Immunofluorescence](#)
- [Immunoprecipitation](#)
- [Flow Cytometry](#)
- [Cell Culture](#)

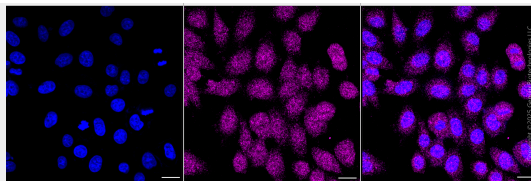
KD-Validated Anti-LTBR mouse monoclonal antibody - Images



Western blotting analysis using anti-lymphotoxin beta receptor antibody (Cat#AGI1967). Total cell lysates (30 μ g) from various cell lines were loaded and separated by SDS-PAGE. The blot was incubated with anti-lymphotoxin beta receptor antibody (Cat#AGI1967, 1:1,000) and HRP-conjugated goat anti-mouse secondary antibody respectively.



Western blotting analysis using anti-lymphotoxin beta receptor antibody (Cat#AGI1967). Lymphotoxin beta receptor expression in wild type (WT) and lymphotoxin beta receptor (LTBR) shRNA knockdown (KD) HeLa cells with 20 μ g of total cell lysates. Hsp90 α serves as a loading control. The blot was incubated with anti-lymphotoxin beta receptor antibody (Cat#AGI1967, 1:1,000) and HRP-conjugated goat anti-mouse secondary antibody respectively.



Immunocytochemical staining of HepG2 cells with anti-Lymphotoxin beta receptor antibody (Cat#AGI1967, 1:1,000). Nuclei were stained blue with DAPI; Lymphotoxin beta receptor was stained magenta with Alexa Fluor® 647. Images were taken using Leica stellaris 5. Protein abundance based on laser Intensity and smart gain: Low. Scale bar, 20 μ m.