

KD-Validated Anti-HARS1 Mouse Monoclonal Antibody
Mouse monoclonal antibody
Catalog # AGI1970**Specification****KD-Validated Anti-HARS1 Mouse Monoclonal Antibody - Product Information**

Application	WB, FC, ICC
Primary Accession	P12081
Reactivity	Human
Clonality	Monoclonal
Isotype	Mouse IgG1
Calculated MW	Predicted, 57 kDa, observed, 50 kDa kDa
Gene Name	HARS1
Aliases	HARS1; Histidyl-TRNA Synthetase 1; HisRS; HARS; Histidine--TRNA Ligase, Cytoplasmic; Histidyl-TRNA Synthetase; EC 6.1.1.21; USH3B; HRS; Histidine TRNA Ligase 1, Cytoplasmic; Histidine Translase; Usher Syndrome 3B; Jo-1 Antigen; Jo-1 Antigen; CMT2W
Immunogen	Recombinant protein of human HARS

KD-Validated Anti-HARS1 Mouse Monoclonal Antibody - Additional Information

Gene ID	3035
Other Names	
Histidine--tRNA ligase, cytoplasmic, 6.1.1.21, Histidyl-tRNA synthetase, HisRS, HARS1 (http://www.genenames.org/cgi-bin/gene_symbol_report?hgnc_id=4816) target="_blank">HGNC:4816), HARS, HRS	

KD-Validated Anti-HARS1 Mouse Monoclonal Antibody - Protein Information**Name** HARS1 ([HGNC:4816](#))**Synonyms** HARS, HRS**Function**

Catalyzes the ATP-dependent ligation of histidine to the 3'- end of its cognate tRNA, via the formation of an aminoacyl-adenylate intermediate (His-AMP) (PubMed:[29235198](http://www.uniprot.org/citations/29235198)). Plays a role in axon guidance (PubMed:[26072516](http://www.uniprot.org/citations/26072516)).

Cellular Location

Cytoplasm {ECO:0000250|UniProtKB:F1Q5D5}.

Tissue Location

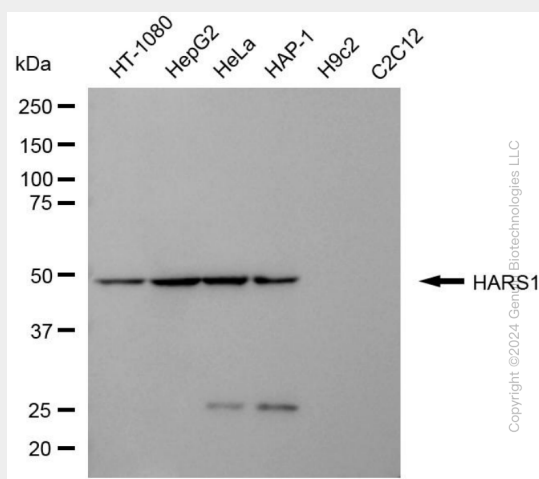
Brain, heart, liver and kidney.

KD-Validated Anti-HARS1 Mouse Monoclonal Antibody - Protocols

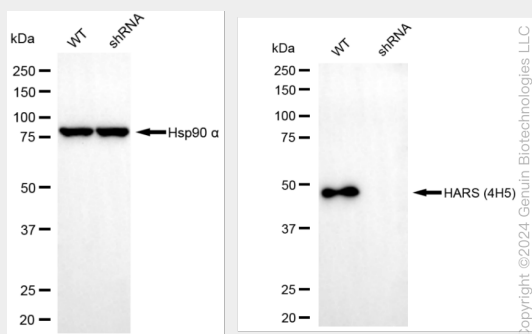
Provided below are standard protocols that you may find useful for product applications.

- [Western Blot](#)
- [Blocking Peptides](#)
- [Dot Blot](#)
- [Immunohistochemistry](#)
- [Immunofluorescence](#)
- [Immunoprecipitation](#)
- [Flow Cytometry](#)
- [Cell Culture](#)

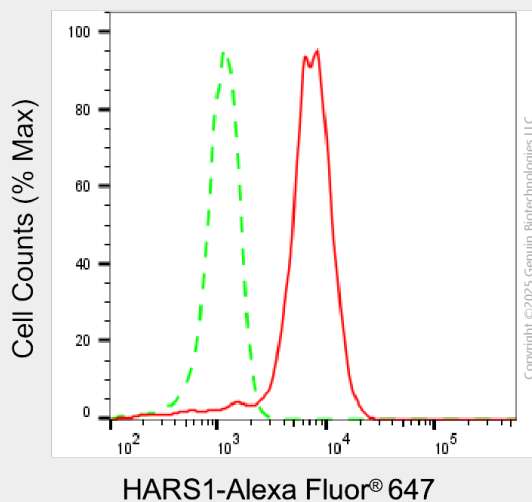
KD-Validated Anti-HARS1 Mouse Monoclonal Antibody - Images



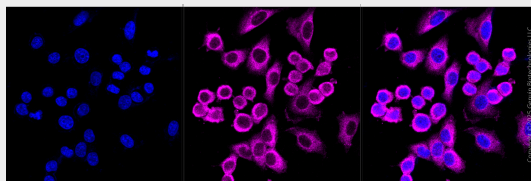
Western blotting analysis using anti-HARS1 antibody (Cat#63655). Total cell lysates (30 µg) from various cell lines were loaded and separated by SDS-PAGE. The blot was incubated with anti-HARS1 antibody (Cat#63655, 1:5,000) and HRP-conjugated goat anti-mouse secondary antibody (Cat#101, 1:20,000) respectively. Image was developed using NaQ™ ECL Substrate Kit (Cat#716).



Western blotting analysis using anti-HARS1 antibody (Cat#63655). HARS1 expression in wild-type (WT) and HARS1 shRNA knockdown (KD) HeLa cells with 20 µg of total cell lysates. Hsp90 α serves as a loading control. The blot was incubated with anti-HARS1 antibody (Cat#63655, 1:5,000) and HRP-conjugated goat anti-mouse secondary antibody (Cat#101, 1:20,000) respectively. Image was developed using NaQ™ ECL Substrate Kit (Cat#716).



Flow cytometric analysis of HARS1 expression in HepG2 cells using anti-HARS1 antibody (Cat#63655, 1:2,000). Green, isotype control; red, HARS1.



Immunocytochemical staining of HepG2 cells with anti-HARS1 antibody (Cat#63655, 1:1,000). Nuclei were stained blue with DAPI; HARS1 was stained magenta with Alexa Fluor® 647. Images were taken using Leica stellaris 5. Protein abundance based on laser Intensity and smart gain: Medium. Scale bar, 20 μ m.