

KD-Validated Anti-Annexin A6 Rabbit Monoclonal Antibody
Rabbit monoclonal antibody
Catalog # AGI1976**Specification****KD-Validated Anti-Annexin A6 Rabbit Monoclonal Antibody - Product Information**

Application	WB
Primary Accession	P08133
Reactivity	Rat, Human, Mouse
Clonality	Monoclonal
Isotype	Rabbit IgG
Calculated MW	Predicted, 76 kDa, observed, 70 kDa kDa
Gene Name	ANXA6
Aliases	ANXA6; Annexin A6; ANX6; 67 kDa Calelectrin; Chromobindin-20; Lipocortin VI; Annexin-6; CPB-II; P68; P70; Testis Secretory Sperm-Binding Protein Li 198a; Calcium-Binding Protein P68; Annexin VI (P68); Calphobindin II; Calphobindin-II; Calelectrin; Protein III; Annexin VI; CBP68
Immunogen	Recombinant protein of human Annexin VI

KD-Validated Anti-Annexin A6 Rabbit Monoclonal Antibody - Additional Information

Gene ID	309
Other Names	
Annexin A6, 67 kDa calelectrin, Annexin VI, Annexin-6, Calphobindin-II, CPB-II, Chromobindin-20, Lipocortin VI, Protein III, p68, p70, ANXA6, ANX6	

KD-Validated Anti-Annexin A6 Rabbit Monoclonal Antibody - Protein Information**Name** ANXA6**Synonyms** ANX6**Function**

May associate with CD21. May regulate the release of Ca(2+) from intracellular stores.

Cellular Location

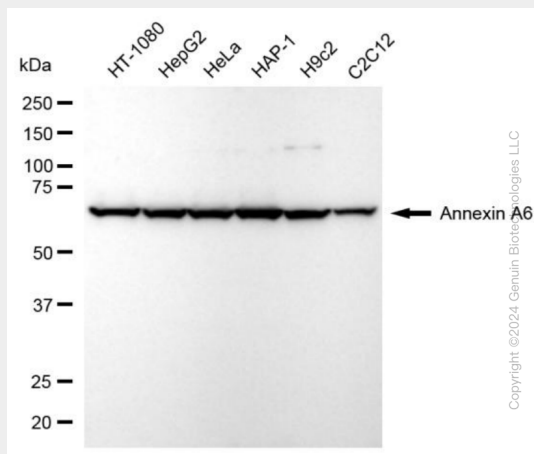
Cytoplasm. Melanosome. Note=Identified by mass spectrometry in melanosome fractions from stage I to stage IV

KD-Validated Anti-Annexin A6 Rabbit Monoclonal Antibody - Protocols

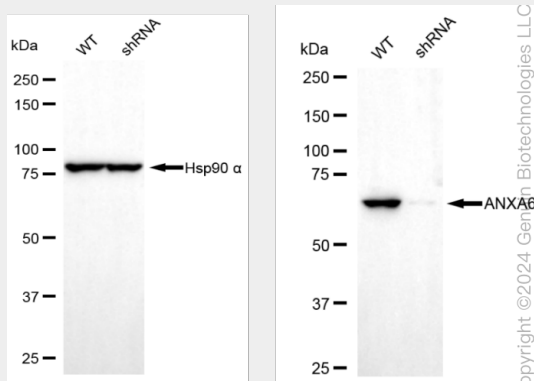
Provided below are standard protocols that you may find useful for product applications.

- [Western Blot](#)
- [Blocking Peptides](#)
- [Dot Blot](#)
- [Immunohistochemistry](#)
- [Immunofluorescence](#)
- [Immunoprecipitation](#)
- [Flow Cytometry](#)
- [Cell Culture](#)

KD-Validated Anti-Annexin A6 Rabbit Monoclonal Antibody - Images



Western blotting analysis using anti-annexin A6 antibody (Cat#63668). Total cell lysates (30 µg) from various cell lines were loaded and separated by SDS-PAGE. The blot was incubated with anti-annexin A6 antibody (Cat#63668, 1:5,000) and HRP-conjugated goat anti-rabbit secondary antibody (Cat#201, 1:20,000) respectively. Image was developed using NaQ™ ECL Substrate Kit (Cat#716).



Western blotting analysis using anti-annexin A6 antibody (Cat#63668). Annexin A6 expression in wild-type (WT) and annexin A6 (ANXA6) shRNA knockdown (KD) HT-1080 cells with 20 µg of total cell lysates. Hsp90 α serves as a loading control. The blot was incubated with anti-annexin A6 antibody (Cat#63668, 1:5,000) and HRP-conjugated goat anti-rabbit secondary antibody (Cat#201, 1:20,000) respectively. Image was developed using NaQ™ ECL Substrate Kit (Cat#716).