

**KD-Validated Anti-BTF3 Rabbit Monoclonal Antibody**  
**Rabbit monoclonal antibody**  
**Catalog # AGI1980****Specification**

---

**KD-Validated Anti-BTF3 Rabbit Monoclonal Antibody - Product Information**

Application	WB, FC, ICC
Primary Accession	<a href="#">P20290</a>
Reactivity	Rat, Human, Mouse
Clonality	Monoclonal
Isotype	Rabbit IgG
Calculated MW	Predicted, 22 kDa, observed, 18,22 kDa
Gene Name	KDa
Aliases	BTF3 BTF3; Basic Transcription Factor 3; BTF3a; BTF3b; NACB; Nascent-Polypeptide-Associated Complex Beta Polypeptide; Nascent Polypeptide-Associated Complex Subunit Beta; RNA Polymerase B Transcription Factor 3; Transcription Factor BTF3; NAC-Beta; BETA-NAC
Immunogen	Recombinant protein of human BTF3

**KD-Validated Anti-BTF3 Rabbit Monoclonal Antibody - Additional Information**

Gene ID	689
<b>Other Names</b>	
Transcription factor BTF3, Nascent polypeptide-associated complex subunit beta, NAC-beta, RNA polymerase B transcription factor 3, BTF3, NACB	

**KD-Validated Anti-BTF3 Rabbit Monoclonal Antibody - Protein Information****Name** BTF3**Synonyms** NACB**Function**

When associated with NACA, prevents inappropriate targeting of non-secretory polypeptides to the endoplasmic reticulum (ER). Binds to nascent polypeptide chains as they emerge from the ribosome and blocks their interaction with the signal recognition particle (SRP), which normally targets nascent secretory peptides to the ER. BTF3 is also a general transcription factor that can form a stable complex with RNA polymerase II. Required for the initiation of transcription.

**Cellular Location**

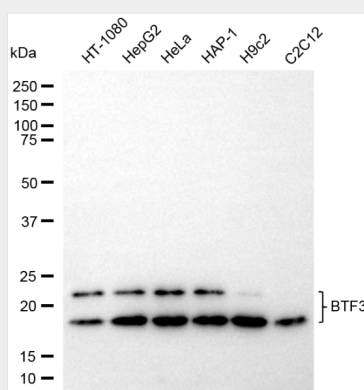
Cytoplasm. Nucleus. Note=The heterodimer with NACA is cytoplasmic

## KD-Validated Anti-BTF3 Rabbit Monoclonal Antibody - Protocols

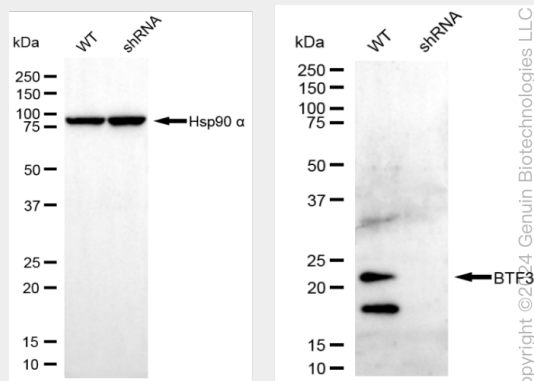
Provided below are standard protocols that you may find useful for product applications.

- [Western Blot](#)
- [Blocking Peptides](#)
- [Dot Blot](#)
- [Immunohistochemistry](#)
- [Immunofluorescence](#)
- [Immunoprecipitation](#)
- [Flow Cytometry](#)
- [Cell Culture](#)

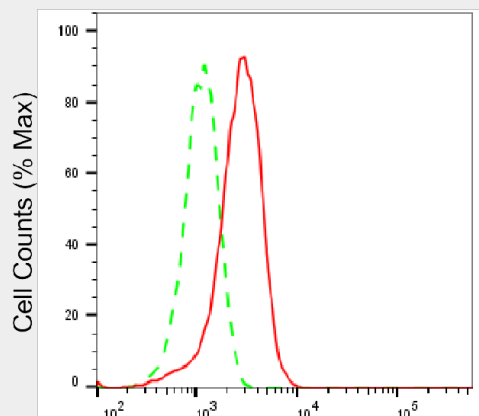
## KD-Validated Anti-BTF3 Rabbit Monoclonal Antibody - Images



Western blotting analysis using anti-BTF3 antibody (Cat#AGI1980). Total cell lysates (30 µg) from various cell lines were loaded and separated by SDS-PAGE. The blot was incubated with anti-BTF3 antibody (Cat#AGI1980, 1:5,000) and HRP-conjugated goat anti-rabbit secondary antibody respectively.



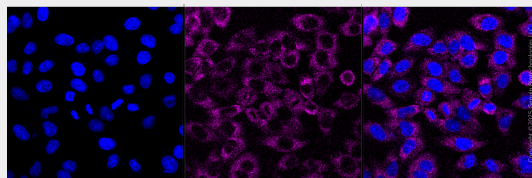
Western blotting analysis using anti-BTF3 antibody (Cat#AGI1980). BTF3 expression in wild-type (WT) and BTF3 shRNA knockdown (KD) HeLa cells with 20 µg of total cell lysates. Hsp90 α serves as a loading control. The blot was incubated with anti-BTF3 antibody (Cat#AGI1980, 1:5,000) and HRP-conjugated goat anti-rabbit secondary antibody respectively.



Copyright ©2025 Genuin Biotechnologies LLC

BTF3-Alexa Fluor® 647

Flow cytometric analysis of BTF3 expression in HepG2 cells using anti-BTF3 antibody (Cat#AGI1980, 1:2,000). Green, isotype control; red, BTF3.



Immunocytochemical staining of HepG2 cells with anti-BTF3 antibody (Cat#AGI1980, 1:1,000). Nuclei were stained blue with DAPI; BTF3 was stained magenta with Alexa Fluor® 647. Images were taken using Leica stellaris 5. Protein abundance based on laser Intensity and smart gain: Medium. Scale bar, 20 µm.