

KD-Validated Anti-RAB27 Mouse Monoclonal Antibody
Mouse monoclonal antibody
Catalog # AGI1995**Specification****KD-Validated Anti-RAB27 Mouse Monoclonal Antibody - Product Information**

Application	WB
Primary Accession	P51159
Reactivity	Human
Clonality	Monoclonal
Isotype	Mouse IgG1 kappa
Calculated MW	Predicted, 25 kDa, observed, 27 kDa
Gene Name	RAB27A
Aliases	RAB27A; RAB27A, Member RAS Oncogene Family; RAB27; HsT18676; RAM; GS2; Ras-Related Protein Rab-27A; GTP-Binding Protein Ram; Rab-27; Mutant Ras-Related Protein Rab-27A; EC 3.6.5.2
Immunogen	Recombinant protein of human RAB27

KD-Validated Anti-RAB27 Mouse Monoclonal Antibody - Additional Information

Gene ID	5873
Other Names	
Ras-related protein Rab-27A, Rab-27, 3.6.5.2, GTP-binding protein Ram, RAB27A, RAB27	

KD-Validated Anti-RAB27 Mouse Monoclonal Antibody - Protein Information**Name** RAB27A**Synonyms** RAB27**Function**

Small GTPase which cycles between active GTP-bound and inactive GDP-bound states. In its active state, binds to a variety of effector proteins to regulate homeostasis of late endocytic pathway, including endosomal positioning, maturation and secretion (PubMed:30771381). Plays a role in cytotoxic granule exocytosis in lymphocytes. Required for both granule maturation and granule docking and priming at the immunologic synapse.

Cellular Location

Membrane; Lipid-anchor. Melanosome. Late endosome. Lysosome. Note=Identified by mass spectrometry in melanosome fractions from stage I to stage IV (PubMed:12643545, PubMed:17081065). Localizes to endosomal exocytic vesicles (PubMed:17237785).

Tissue Location

Found in all the examined tissues except in brain. Low expression was found in thymus, kidney, muscle and placenta Detected in melanocytes, and in most tumor cell lines examined Expressed in

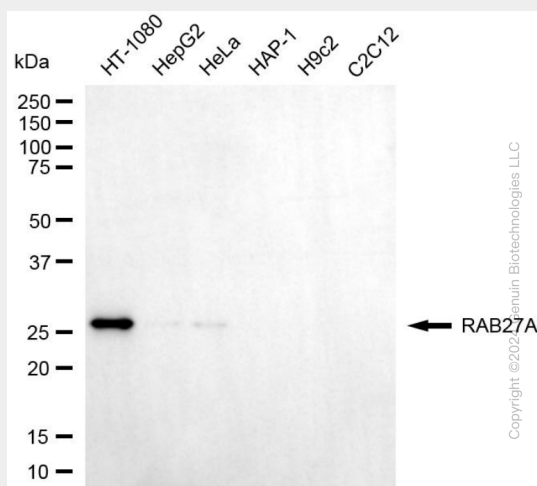
cytotoxic T-lymphocytes (CTL) and mast cells

KD-Validated Anti-RAB27 Mouse Monoclonal Antibody - Protocols

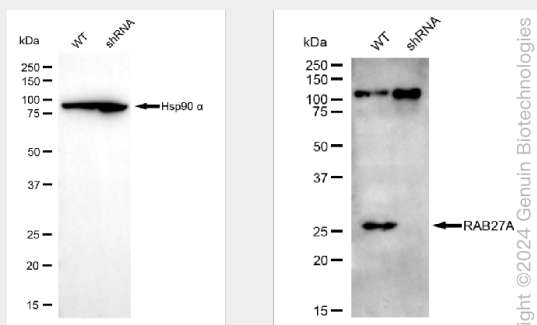
Provided below are standard protocols that you may find useful for product applications.

- [Western Blot](#)
- [Blocking Peptides](#)
- [Dot Blot](#)
- [Immunohistochemistry](#)
- [Immunofluorescence](#)
- [Immunoprecipitation](#)
- [Flow Cytometry](#)
- [Cell Culture](#)

KD-Validated Anti-RAB27 Mouse Monoclonal Antibody - Images



Western blotting analysis using anti-RAB27A antibody (Cat#AGI1995). Total cell lysates (30 µg) from various cell lines were loaded and separated by SDS-PAGE. The blot was incubated with anti-RAB27A antibody (Cat#AGI1995, 1:5,000) and HRP-conjugated goat anti-mouse secondary antibody respectively.



Western blotting analysis using anti-RAB27A antibody (Cat#AGI1995). RAB27A expression in wild-type (WT) and RAB27A shRNA knockdown (KD) HeLa cells with 20 µg of total cell lysates. Hsp90 α serves as a loading control. The blot was incubated with anti-RAB27A antibody (Cat#AGI1995, 1:1,000) and HRP-conjugated goat anti-mouse secondary antibody respectively.