

**KD-Validated Anti-BCAT1 Mouse Monoclonal Antibody**  
**Mouse monoclonal antibody**  
**Catalog # AGI2010****Specification****KD-Validated Anti-BCAT1 Mouse Monoclonal Antibody - Product Information**

Application	WB, FC
Primary Accession	<a href="#">P54687</a>
Reactivity	Human, Mouse
Clonality	Monoclonal
Isotype	Mouse IgG2a
Calculated MW	Predicted, 43 kDa, observed, 43 kDa kDa
Gene Name	BCAT1
Aliases	BCAT1; Branched Chain Amino Acid Transaminase 1; BCATc; BCT1; Branched-Chain-Amino-Acid Aminotransferase, Cytosolic; Branched Chain Aminotransferase 1, Cytosolic; EC 2.6.1.42; ECA39; Branched Chain Amino-Acid Transaminase 1, Cytosolic; Placental Protein 18; Protein ECA39; PNAS121; BCAT(C); MECA39; PP18
Immunogen	Recombinant protein of human BCAT1

**KD-Validated Anti-BCAT1 Mouse Monoclonal Antibody - Additional Information**

Gene ID	586
<b>Other Names</b>	
Branched-chain-amino-acid aminotransferase, cytosolic, BCAT(c), 2.6.1.42, BCAT1, BCT1, ECA39 {ECO:0000303 PubMed:8692959}	

**KD-Validated Anti-BCAT1 Mouse Monoclonal Antibody - Protein Information****Name** BCAT1**Synonyms** BCT1, ECA39 {ECO:0000303|PubMed:8692959}**Function**

Catalyzes the first reaction in the catabolism of the essential branched chain amino acids leucine, isoleucine, and valine.

**Cellular Location**

Cytoplasm {ECO:0000250|UniProtKB:P54690}.

**Tissue Location**

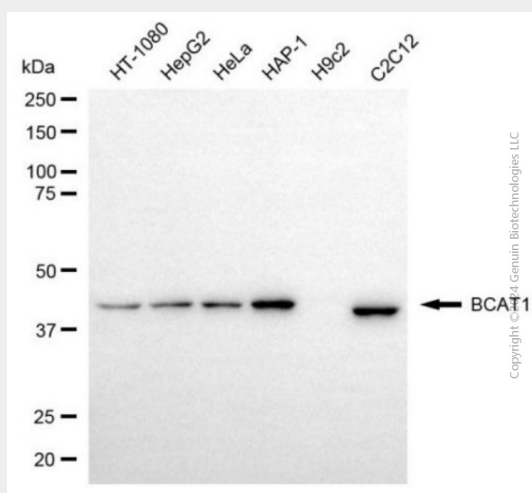
During embryogenesis, expressed in the brain and kidney. Overexpressed in MYC-induced tumors such as Burkitt's lymphoma

## KD-Validated Anti-BCAT1 Mouse Monoclonal Antibody - Protocols

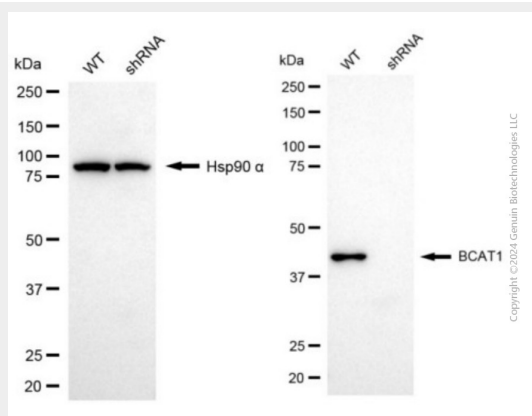
Provided below are standard protocols that you may find useful for product applications.

- [Western Blot](#)
- [Blocking Peptides](#)
- [Dot Blot](#)
- [Immunohistochemistry](#)
- [Immunofluorescence](#)
- [Immunoprecipitation](#)
- [Flow Cytometry](#)
- [Cell Culture](#)

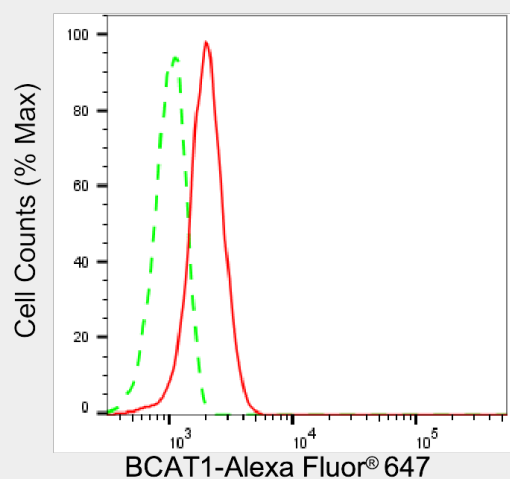
## KD-Validated Anti-BCAT1 Mouse Monoclonal Antibody - Images



Western blotting analysis using anti-BCAT1 antibody (Cat#AGI2010). Total cell lysates (30 µg) from various cell lines were loaded and separated by SDS-PAGE. The blot was incubated with anti-BCAT1 antibody (Cat#AGI2010, 1:5,000) and HRP-conjugated goat anti-mouse secondary antibody respectively.



Western blotting analysis using anti-BCAT1 antibody (Cat#AGI2010). BCAT1 expression in wild type (WT) and BCAT1 shRNA knockdown (KD) HeLa cells with 20 µg of total cell lysates. Hsp90 α serves as a loading control. The blot was incubated with anti-BCAT1 antibody (Cat#AGI2010, 1:5,000) and HRP-conjugated goat anti-mouse secondary antibody respectively.



Flow cytometric analysis of BCAT1 expression in C2C12 cells using anti-BCAT1 antibody (Cat#AGI2010, 1:1,000). Green, isotype control; red, BCAT1.