

KD-Validated Anti-CBX8 Mouse Monoclonal Antibody
Mouse monoclonal antibody
Catalog # AGI2014**Specification**

KD-Validated Anti-CBX8 Mouse Monoclonal Antibody - Product Information

Application	WB, FC
Primary Accession	Q9HC52
Reactivity	Human
Clonality	Monoclonal
Isotype	Mouse IgG2b
Calculated MW	Predicted, 43 kDa, observed, 43 kDa kDa
Gene Name	CBX8
Aliases	CBX8; Chromobox 8; RC1; PC3; Chromobox Protein Homolog 8; Rectachrome 1; Polycomb 3; HPC3; Chromobox Homolog 8 (Pc Class Homolog, Drosophila); Chromobox Homolog 8 (Drosophila Pc Class); Pc Class 3 Homolog (Drosophila); Chromobox Homolog 8; Pc Class 3 Homolog; Polycomb 3 Homolog; HPc3; Pc3
Immunogen	Recombinant protein of human CBX8

KD-Validated Anti-CBX8 Mouse Monoclonal Antibody - Additional Information

Gene ID	57332
Other Names	Chromobox protein homolog 8, Polycomb 3 homolog, Pc3, hPc3, Rectachrome 1, CBX8, PC3, RC1

KD-Validated Anti-CBX8 Mouse Monoclonal Antibody - Protein Information**Name** CBX8**Synonyms** PC3, RC1**Function**

Component of a Polycomb group (PcG) multiprotein PRC1-like complex, a complex class required to maintain the transcriptionally repressive state of many genes, including Hox genes, throughout development. PcG PRC1 complex acts via chromatin remodeling and modification of histones; it mediates monoubiquitination of histone H2A 'Lys-119', rendering chromatin heritably changed in its expressibility.

Cellular Location

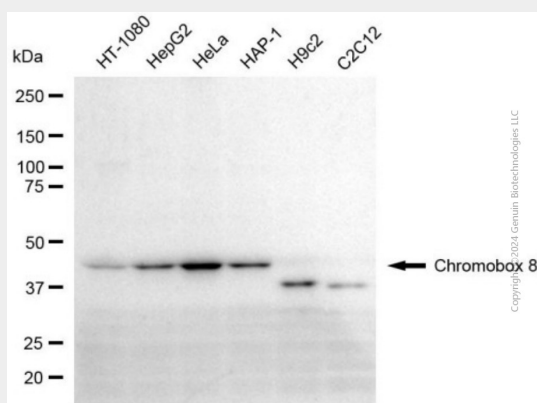
Nucleus.

KD-Validated Anti-CBX8 Mouse Monoclonal Antibody - Protocols

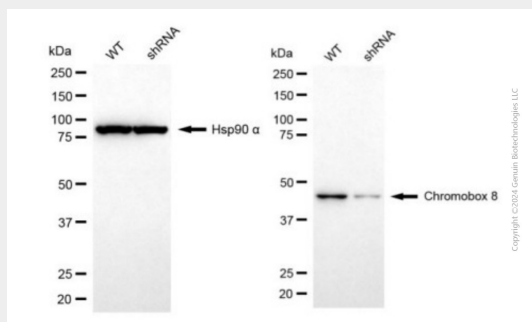
Provided below are standard protocols that you may find useful for product applications.

- [Western Blot](#)
- [Blocking Peptides](#)
- [Dot Blot](#)
- [Immunohistochemistry](#)
- [Immunofluorescence](#)
- [Immunoprecipitation](#)
- [Flow Cytometry](#)
- [Cell Culture](#)

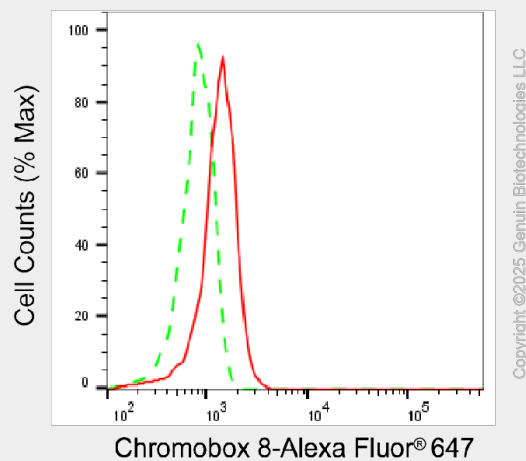
KD-Validated Anti-CBX8 Mouse Monoclonal Antibody - Images



Western blotting analysis using anti-chromobox 8 antibody (Cat#AGI2014). Total cell lysates (30 μ g) from various cell lines were loaded and separated by SDS-PAGE. The blot was incubated with anti-chromobox 8 antibody (Cat#AGI2014, 1:1,000) and HRP-conjugated goat anti-mouse secondary antibody respectively.



Western blotting analysis using anti-chromobox 8 antibody (Cat#AGI2014). Chromobox 8 expression in wild-type (WT) and chromobox 8 (CBX8) shRNA knockdown (KD) HeLa cells with 20 μ g of total cell lysates. Hsp90 α serves as a loading control. The blot was incubated with anti-chromobox 8 antibody (Cat#AGI2014, 1:1,000) and HRP-conjugated goat anti-mouse secondary antibody respectively.



Flow cytometric analysis of Chromobox 8 expression in HeLa cells using anti-Chromobox 8 antibody (Cat#AGI2014, 1:1,000). Green, isotype control; red, Chromobox 8.