

KD-Validated Anti-CRLF3 Mouse Monoclonal Antibody
Mouse monoclonal antibody
Catalog # AGI2022**Specification****KD-Validated Anti-CRLF3 Mouse Monoclonal Antibody - Product Information**

Application	WB, FC
Primary Accession	Q8IU18
Reactivity	Human
Clonality	Monoclonal
Isotype	Mouse IgG1
Calculated MW	Predicted, 50 kDa, observed, 51 kDa kDa
Gene Name	CRLF3
Aliases	CRLF3; Cytokine Receptor Like Factor 3; CREME9; CYTOR4; Cytokine Receptor-Like Factor 3; Type I Cytokine Receptor-Related Protein 4; Cytokine Receptor-Like Molecule 9; CREME-9; CRLM9; P48.2; FRWS; P48
Immunogen	Recombinant protein of human CRLF3

KD-Validated Anti-CRLF3 Mouse Monoclonal Antibody - Additional Information

Gene ID	51379
Other Names	Cytokine receptor-like factor 3, Cytokine receptor-like molecule 9, CREME-9, Cytokine receptor-related protein 4, Type I cytokine receptor-like factor p48, CRLF3, CREME9, CRLM9, CYTOR4, P48

KD-Validated Anti-CRLF3 Mouse Monoclonal Antibody - Protein Information**Name** CRLF3**Synonyms** CREME9, CRLM9, CYTOR4, P48**Function**

May play a role in the negative regulation of cell cycle progression.

Cellular Location

Cytoplasm. Note=The EGFP- and MYC-tagged protein has been shown to be cytoplasmic

Tissue Location

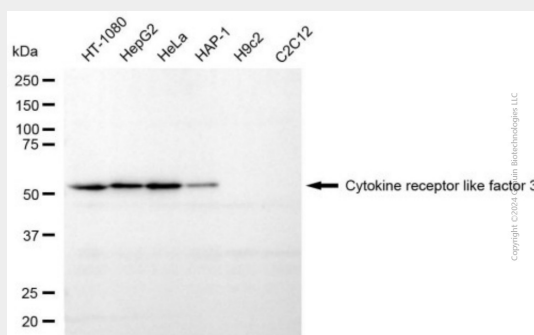
Expressed in several embryonic and adult tissues, including adult and fetal brain, liver, spleen and pancreas. Expressed in adult, but not fetal kidney. Expressed in skin and squamous cell carcinoma (SCC) and in several other cancer types. Also detected in lesion actinic keratosis (AK).

KD-Validated Anti-CRLF3 Mouse Monoclonal Antibody - Protocols

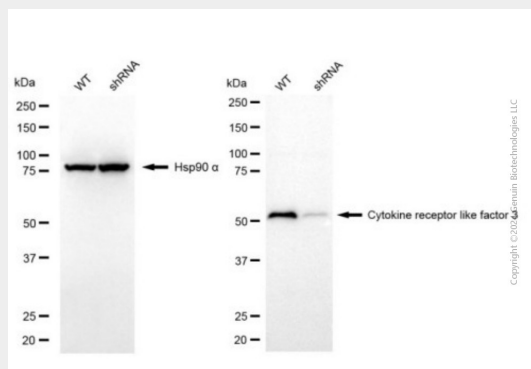
Provided below are standard protocols that you may find useful for product applications.

- [Western Blot](#)
- [Blocking Peptides](#)
- [Dot Blot](#)
- [Immunohistochemistry](#)
- [Immunofluorescence](#)
- [Immunoprecipitation](#)
- [Flow Cytometry](#)
- [Cell Culture](#)

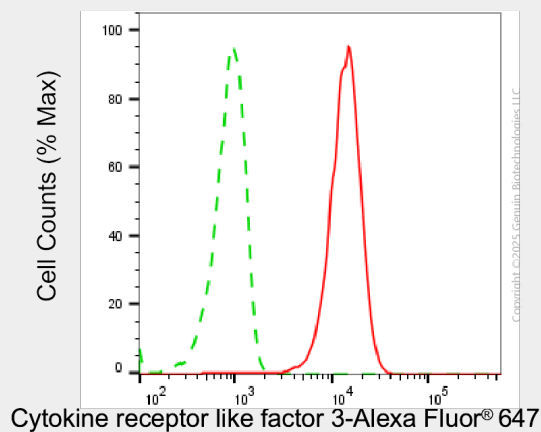
KD-Validated Anti-CRLF3 Mouse Monoclonal Antibody - Images



Western blotting analysis using anti-cytokine receptor like factor 3 antibody (Cat#AGI2022). Total cell lysates (30 µg) from various cell lines were loaded and separated by SDS-PAGE. The blot was incubated with anti-cytokine receptor like factor 3 antibody (Cat#AGI2022, 1:1,000) and HRP-conjugated goat anti-mouse secondary antibody respectively.



Western blotting analysis using anti-cytokine receptor like factor 3 antibody (Cat#AGI2022). Cytokine receptor like factor 3 expression in wild-type (WT) and cytokine receptor like factor 3 (CRLF3) shRNA knockdown (KD) HeLa cells with 20 µg of total cell lysates. Hsp90 α serves as a loading control. The blot was incubated with anti-cytokine receptor like factor 3 antibody (Cat#AGI2022, 1:1,000) and HRP-conjugated goat anti-mouse secondary antibody respectively.



Flow cytometric analysis of Cytokine receptor like factor 3 expression in HepG2 cells using anti-Cytokine receptor like factor 3 antibody (Cat#AGI2022, 1:2,000). Green, isotype control; red, Cytokine receptor like factor 3.