

**KD-Validated Anti-EIF2B3 Mouse Monoclonal Antibody**  
**Mouse monoclonal antibody**  
**Catalog # AGI2028****Specification****KD-Validated Anti-EIF2B3 Mouse Monoclonal Antibody - Product Information**

Application	WB, FC
Primary Accession	<a href="#">Q9NR50</a>
Reactivity	Rat, Human, Mouse
Clonality	Monoclonal
Isotype	Mouse IgG1
Calculated MW	Predicted, 50 kDa, observed, 50 kDa kDa
Gene Name	EIF2B3
Aliases	EIF2B3; Eukaryotic Translation Initiation Factor 2B Subunit Gamma; EIF2Bgamma; EIF-2B; Eukaryotic Translation Initiation Factor 2B, Subunit 3 Gamma, 58kDa; Translation Initiation Factor EIF2B Subunit Gamma; EIF2B GDP-GTP Exchange Factor Subunit Gamma; Eukaryotic Translation Initiation Factor 2B, Subunit 3 (Gamma, 58kD); Translation Initiation Factor EIF-2B Subunit Gamma; EIF-2B GDP-GTP Exchange Factor Subunit Gamma; VWM3
Immunogen	Recombinant protein of human EIF2B3

**KD-Validated Anti-EIF2B3 Mouse Monoclonal Antibody - Additional Information**

Gene ID	8891
<b>Other Names</b>	
Translation initiation factor eIF2B subunit gamma, eIF2B GDP-GTP exchange factor subunit gamma, EIF2B3	

**KD-Validated Anti-EIF2B3 Mouse Monoclonal Antibody - Protein Information****Name** EIF2B3**Function**

Acts as a component of the translation initiation factor 2B (eIF2B) complex, which catalyzes the exchange of GDP for GTP on the eukaryotic initiation factor 2 (eIF2) complex gamma subunit (PubMed: [25858979](http://www.uniprot.org/citations/25858979), PubMed: [27023709](http://www.uniprot.org/citations/27023709), PubMed: [31048492](http://www.uniprot.org/citations/31048492)). Its guanine nucleotide exchange factor activity is repressed when bound to eIF2 complex phosphorylated on the alpha subunit, thereby limiting the amount of methionyl-initiator methionine tRNA available to the ribosome and consequently global translation is repressed (PubMed: [25858979](http://www.uniprot.org/citations/25858979), PubMed: [31048492](http://www.uniprot.org/citations/31048492)).

## Cellular Location

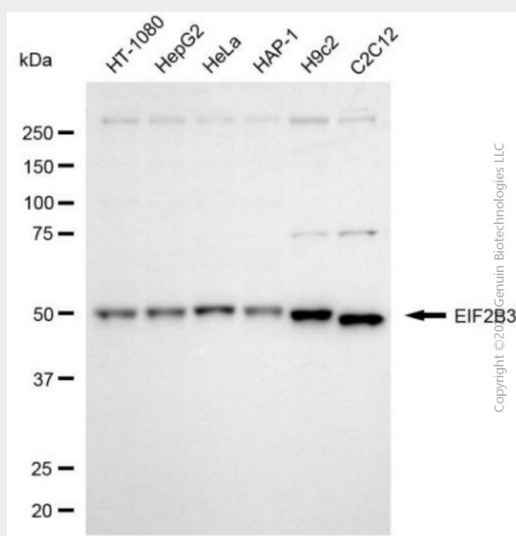
Cytoplasm, cytosol {ECO:0000250|UniProtKB:P56288}

## KD-Validated Anti-EIF2B3 Mouse Monoclonal Antibody - Protocols

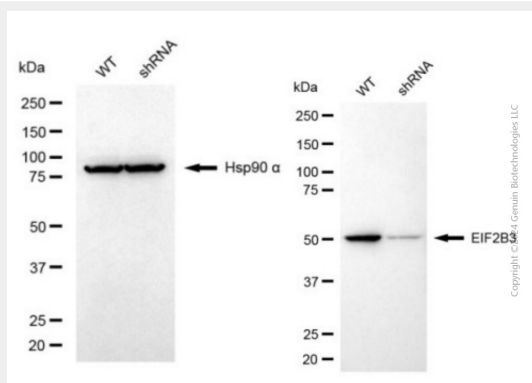
Provided below are standard protocols that you may find useful for product applications.

- [Western Blot](#)
- [Blocking Peptides](#)
- [Dot Blot](#)
- [Immunohistochemistry](#)
- [Immunofluorescence](#)
- [Immunoprecipitation](#)
- [Flow Cytometry](#)
- [Cell Culture](#)

## KD-Validated Anti-EIF2B3 Mouse Monoclonal Antibody - Images

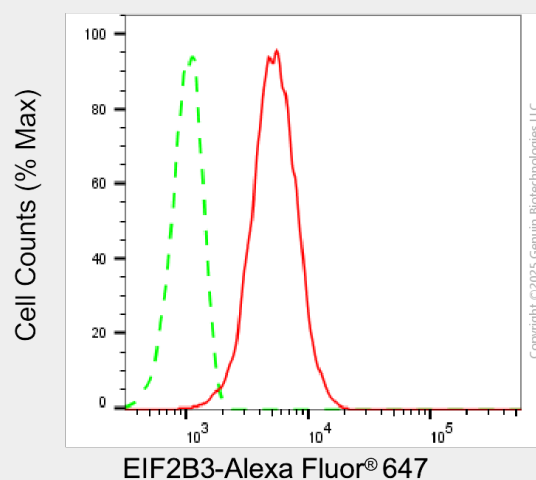


Western blotting analysis using anti-EIF2B3 antibody (Cat#AGI2028). Total cell lysates (30 µg) from various cell lines were loaded and separated by SDS-PAGE. The blot was incubated with anti-EIF2B3 antibody (Cat#AGI2028, 1:2,500) and HRP-conjugated goat anti-mouse secondary antibody respectively.



Western blotting analysis using anti-EIF2B3 antibody (Cat#AGI2028). EIF2B3 expression in wild

type (WT) and EIF2B3 shRNA knockdown (KD) HeLa cells with 20 µg of total cell lysates. Hsp90 α serves as a loading control. The blot was incubated with anti-EIF2B3 antibody (Cat#AGI2028, 1:2,500) and HRP-conjugated goat anti-mouse secondary antibody respectively.



Flow cytometric analysis of EIF2B3 expression in C2C12 cells using anti-EIF2B3 antibody (Cat#AGI2028, 1:1,000). Green, isotype control; red, EIF2B3.