

**KD-Validated Anti-Epsin 2 Mouse Monoclonal Antibody**  
**Mouse monoclonal antibody**  
**Catalog # AGI2032****Specification**

---

**KD-Validated Anti-Epsin 2 Mouse Monoclonal Antibody - Product Information**

Application	WB, FC
Primary Accession	<a href="#">O95208</a>
Reactivity	Human
Clonality	Monoclonal
Isotype	Mouse IgG1
Calculated MW	Predicted, 68 kDa, observed, 68 kDa kDa
Gene Name	EPN2
Aliases	EPN2; Epsin 2; KIAA1065; EHB21; EPS-15-Interacting Protein 2; Eps15 Binding Protein; Epsin-2
Immunogen	Recombinant protein of human EPN2

**KD-Validated Anti-Epsin 2 Mouse Monoclonal Antibody - Additional Information**

Gene ID	22905
<b>Other Names</b>	
Epsin-2, EPS-15-interacting protein 2, EPN2, KIAA1065	

**KD-Validated Anti-Epsin 2 Mouse Monoclonal Antibody - Protein Information****Name** EPN2**Synonyms** KIAA1065**Function**

Plays a role in the formation of clathrin-coated invaginations and endocytosis.

**Cellular Location**

Cytoplasm. Cytoplasmic vesicle, clathrin-coated vesicle. Note=In punctate structures throughout the cell, associated with clathrin-coated vesicles, and particularly concentrated in the region of the Golgi complex

**Tissue Location**

Highest expression is found in brain. Detected at lower levels in lung and liver.

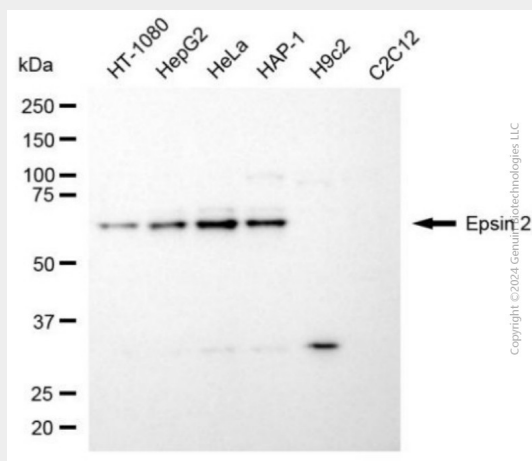
**KD-Validated Anti-Epsin 2 Mouse Monoclonal Antibody - Protocols**

Provided below are standard protocols that you may find useful for product applications.

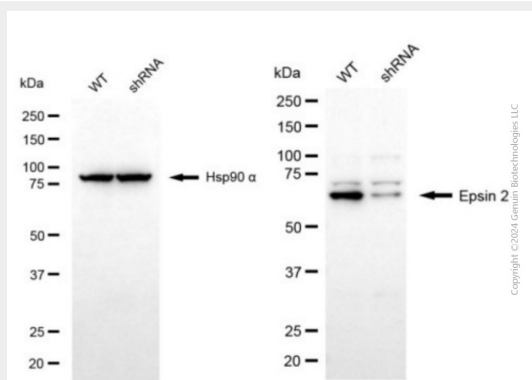
- [Western Blot](#)

- [Blocking Peptides](#)
- [Dot Blot](#)
- [Immunohistochemistry](#)
- [Immunofluorescence](#)
- [Immunoprecipitation](#)
- [Flow Cytometry](#)
- [Cell Culture](#)

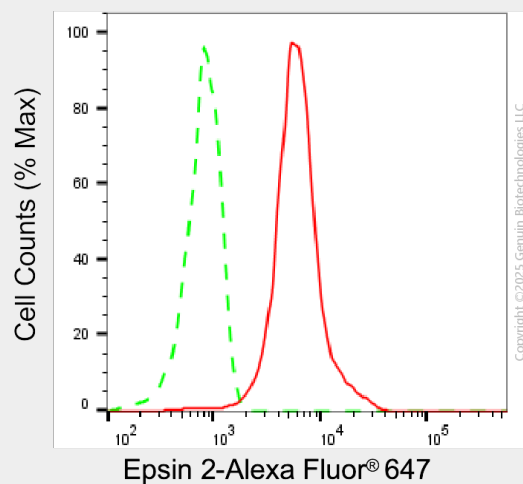
## KD-Validated Anti-Epsin 2 Mouse Monoclonal Antibody - Images



Western blotting analysis using anti-epsin 2 antibody (Cat#63852). Total cell lysates (30 µg) from various cell lines were loaded and separated by SDS-PAGE. The blot was incubated with anti-epsin 2 antibody (Cat#63852, 1:2,500) and HRP-conjugated goat anti-mouse secondary antibody (Cat#101, 1:20,000) respectively. Image was developed using NaQ™ ECL Substrate Kit (Cat#716).



Western blotting analysis using anti-epsin 2 antibody (Cat#63852). Epsin 2 expression in wild type (WT) and epsin 2 (EPN2) shRNA knockdown (KD) HeLa cells with 20 µg of total cell lysates. Hsp90 α serves as a loading control. The blot was incubated with anti-epsin 2 antibody (Cat#63852, 1:2,500) and HRP-conjugated goat anti-mouse secondary antibody (Cat#101, 1:20,000) respectively. Image was developed using NaQ™ ECL Substrate Kit (Cat#716).



Flow cytometric analysis of Epsin 2 expression in HeLa cells using anti-Epsin 2 antibody (Cat#63852, 1:1,000). Green, isotype control; red, Epsin 2.