

KD-Validated Anti-EPHX1 Mouse Monoclonal Antibody
Mouse monoclonal antibody
Catalog # AGI2035**Specification****KD-Validated Anti-EPHX1 Mouse Monoclonal Antibody - Product Information**

Application	WB
Primary Accession	P07099
Reactivity	Human
Clonality	Monoclonal
Isotype	Mouse IgG2b
Calculated MW	Predicted, 53 kDa, observed, 48 kDa kDa
Gene Name	EPHX1
Aliases	EPHX1; Epoxide Hydrolase 1; EPHX; Epoxide Hydrolase 1, Microsomal (Xenobiotic); Epoxide Hydratase; EPOX; MEH; Epoxide Hydrolase 1 Microsomal; Microsomal Epoxide Hydrolase; EC 3.3.2.9; HYL1
Immunogen	Recombinant protein of human EPHX1

KD-Validated Anti-EPHX1 Mouse Monoclonal Antibody - Additional Information

Gene ID	2052
Other Names	
Epoxide hydrolase 1, 3.3.2.9, EPHX1 (http://www.genenames.org/cgi-bin/gene_symbol_report?hgnc_id=3401) target="_blank">HGNC:3401), EPHX, EPOX	

KD-Validated Anti-EPHX1 Mouse Monoclonal Antibody - Protein Information**Name** EPHX1 ([HGNC:3401](#))**Synonyms** EPHX, EPOX**Function**

Biotransformation enzyme that catalyzes the hydrolysis of arene and aliphatic epoxides to less reactive and more water soluble dihydrodiols by the trans addition of water (By similarity). Plays a role in the metabolism of endogenous lipids such as epoxide-containing fatty acids (PubMed:[22798687](http://www.uniprot.org/citations/22798687)). Metabolizes the abundant endocannabinoid 2-arachidonoylglycerol (2-AG) to free arachidonic acid (AA) and glycerol (PubMed:[24958911](http://www.uniprot.org/citations/24958911)). Binds 20(S)-hydroxycholesterol (20(S)-OHC) (By similarity).

Cellular Location

Microsome membrane; Single-pass type III membrane protein. Endoplasmic reticulum membrane {ECO:0000250|UniProtKB:P07687}; Single-pass type III membrane protein {ECO:0000250|UniProtKB:P07687}

Tissue Location

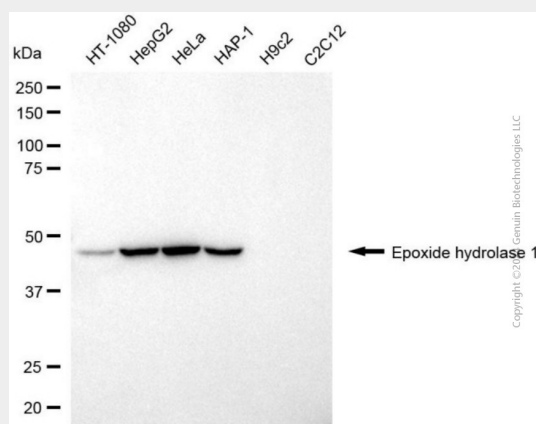
Found in liver..

KD-Validated Anti-EPHX1 Mouse Monoclonal Antibody - Protocols

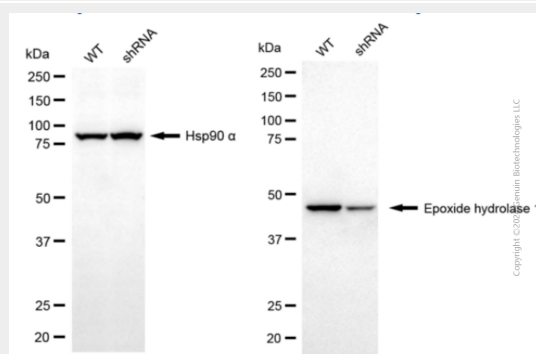
Provided below are standard protocols that you may find useful for product applications.

- [Western Blot](#)
- [Blocking Peptides](#)
- [Dot Blot](#)
- [Immunohistochemistry](#)
- [Immunofluorescence](#)
- [Immunoprecipitation](#)
- [Flow Cytometry](#)
- [Cell Culture](#)

KD-Validated Anti-EPHX1 Mouse Monoclonal Antibody - Images



Western blotting analysis using anti-epoxide hydrolase 1 antibody (Cat#3859). Total cell lysates (30 µg) from various cell lines were loaded and separated by SDS-PAGE. The blot was incubated with anti-epoxide hydrolase 1 antibody (Cat#3859, 1:2,500) and HRP-conjugated goat anti-mouse secondary antibody (Cat#101, 1:20,000) respectively. Image was developed using FeQ™ ECL Substrate Kit (Cat#226).



Western blotting analysis using anti-epoxide hydrolase 1 antibody (Cat#63859). Epoxide hydrolase 1 expression in wild-type (WT) and epoxide hydrolase 1 (EPHX1) shRNA knockdown (KD) HeLa cells with 20 µg of total cell lysates. Hsp90 α serves as a loading control. The blot was incubated with anti-epoxide hydrolase 1 antibody (Cat#63859, 1:2,500) and HRP-conjugated goat anti-mouse secondary antibody (Cat#101, 1:20,000) respectively. Image was developed using

FeQ™ ECL Substrate Kit (Cat#226).