

**KD-Validated Anti-FARSB Mouse Monoclonal Antibody**  
**Mouse monoclonal antibody**  
**Catalog # AGI2040****Specification**

---

**KD-Validated Anti-FARSB Mouse Monoclonal Antibody - Product Information**

Application	WB, FC
Primary Accession	<a href="#">Q9NSD9</a>
Reactivity	Rat, Human, Mouse
Clonality	Monoclonal
Isotype	Mouse IgG1
Calculated MW	Predicted, 66 kDa, observed, 66 kDa kDa
Gene Name	FARSB
Aliases	FARSB; Phenylalanyl-TRNA Synthetase Subunit Beta; FRSB; FARSLB; PheHB; Phenylalanyl-TRNA Synthetase-Like, Beta Subunit; Phenylalanine TRNA Ligase 1, Beta, Cytoplasmic; Phenylalanyl-TRNA Synthetase Beta Subunit; Phenylalanine--TRNA Ligase Beta Subunit; EC 6.1.1.20; PheRS; Phenylalanine-TRNA Synthetase-Like, Beta Subunit; Phenylalanyl-TRNA Synthetase Beta Chain; Phenylalanine-TRNA Ligase Beta Chain; EC 6.1.1; HSPC173; NEDBLLA; RILDBC1; RILDBC; RJBS
Immunogen	Recombinant protein of human FARSB

**KD-Validated Anti-FARSB Mouse Monoclonal Antibody - Additional Information**

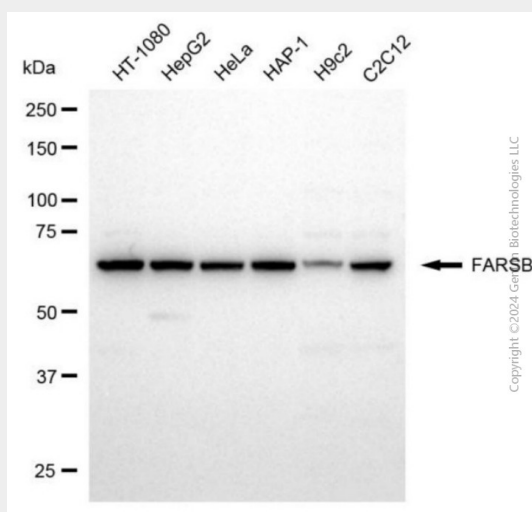
Gene ID	10056
<b>Other Names</b>	
Phenylalanine--tRNA ligase beta subunit, 6.1.1.20, Phenylalanyl-tRNA synthetase beta subunit, PheRS, FARSB, FARSLB, FRSB	

**KD-Validated Anti-FARSB Mouse Monoclonal Antibody - Protein Information****Name** FARSB**Synonyms** FARSLB, FRSB**Cellular Location**  
Cytoplasm.**KD-Validated Anti-FARSB Mouse Monoclonal Antibody - Protocols**

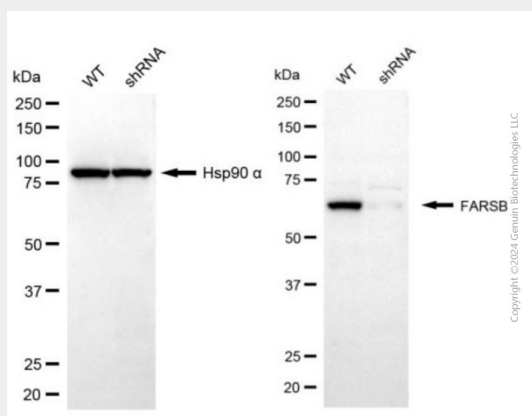
Provided below are standard protocols that you may find useful for product applications.

- [Western Blot](#)
- [Blocking Peptides](#)
- [Dot Blot](#)
- [Immunohistochemistry](#)
- [Immunofluorescence](#)
- [Immunoprecipitation](#)
- [Flow Cytometry](#)
- [Cell Culture](#)

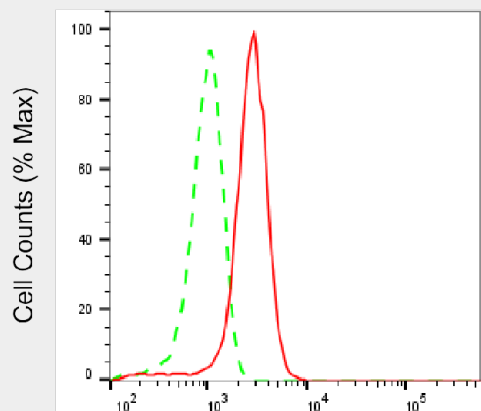
### KD-Validated Anti-FARSB Mouse Monoclonal Antibody - Images



Western blotting analysis using anti-FARSF antibody (Cat#AGI2040). Total cell lysates (30 µg) from various cell lines were loaded and separated by SDS-PAGE. The blot was incubated with anti-FARSF antibody (Cat#AGI2040, 1:1,000) and HRP-conjugated goat anti-mouse secondary antibody respectively.



Western blotting analysis using anti-FARSF antibody (Cat#AGI2040). FARSF expression in wild type (WT) and FARSF shRNA knockdown (KD) HeLa cells with 20 µg of total cell lysates. Hsp90 α serves as a loading control. The blot was incubated with anti-FARSF antibody (Cat#AGI2040, 1:1,000) and HRP-conjugated goat anti-mouse secondary antibody respectively.



Copyright ©2025 Genuin Biotechnologies LLC

Flow cytometric analysis of FARSB expression in HepG2 cells using anti-FARSB antibody (Cat#AGI2040, 1:1,000). Green, isotype control; red, FARSB.