

**KD-Validated Anti-CWC27 Mouse Monoclonal Antibody**  
**Mouse monoclonal antibody**  
**Catalog # AGI2044****Specification****KD-Validated Anti-CWC27 Mouse Monoclonal Antibody - Product Information**

Application	WB, FC, ICC
Primary Accession	<a href="#">Q6UX04</a>
Reactivity	Rat, Human, Mouse
Clonality	Monoclonal
Isotype	Mouse IgG1
Calculated MW	Predicted, 54 kDa, observed, 62 kDa kDa
Gene Name	CWC27
Aliases	CWC27; CWC27 Spliceosome Associated Cyclophilin; Serologically Defined Colon Cancer Antigen 10; SDCCAG-10; NY-CO-10; SDCCAG10; Probable Inactive Peptidyl-Prolyl Cis-Trans Isomerase CWC27 Homolog; CWC27 Spliceosome Associated Protein Homolog; Spliceosome-Associated Protein CWC27 Homolog; Antigen NY-CO-10; PPIase CWC27; CWC27 Spliceosome-Associated Protein Homolog (S. Cerevisiae); Peptidyl-Prolyl Cis-Trans Isomerase CWC27 Homolog; CWC27 Spliceosome-Associated Protein Homolog; Peptidyl-Prolyl Cis-Trans Isomerase SDCCAG10; PPIase SDCCAG10; RPSKA
Immunogen	Recombinant protein of human CWC27

**KD-Validated Anti-CWC27 Mouse Monoclonal Antibody - Additional Information**

Gene ID 10283

**Other Names**

Spliceosome-associated protein CWC27 homolog, Antigen NY-CO-10, Probable inactive peptidyl-prolyl cis-trans isomerase CWC27 homolog, PPIase CWC27, Serologically defined colon cancer antigen 10, CWC27 ([http://www.genenames.org/cgi-bin/gene\\_symbol\\_report?hgnc\\_id=10664](http://www.genenames.org/cgi-bin/gene_symbol_report?hgnc_id=10664))

**KD-Validated Anti-CWC27 Mouse Monoclonal Antibody - Protein Information**Name CWC27 ([HGNC:10664](#))**Function**

As part of the spliceosome, plays a role in pre-mRNA splicing (PubMed:<http://www.uniprot.org/citations/29360106>). Probable inactive PPIase with no peptidyl-prolyl cis-trans isomerase activity (PubMed:[http://www.uniprot.org/citations/29360106](#))

href="http://www.uniprot.org/citations/20676357" target="\_blank">20676357</a>). As a component of the minor spliceosome, involved in the splicing of U12-type introns in pre- mRNAs (Probable).

#### Cellular Location

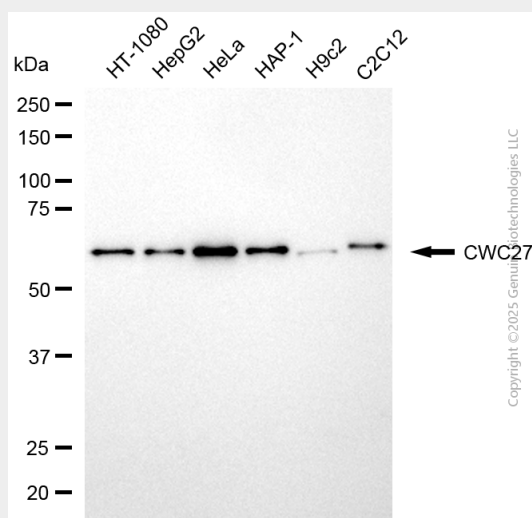
Nucleus.

#### KD-Validated Anti-CWC27 Mouse Monoclonal Antibody - Protocols

Provided below are standard protocols that you may find useful for product applications.

- [Western Blot](#)
- [Blocking Peptides](#)
- [Dot Blot](#)
- [Immunohistochemistry](#)
- [Immunofluorescence](#)
- [Immunoprecipitation](#)
- [Flow Cytometry](#)
- [Cell Culture](#)

#### KD-Validated Anti-CWC27 Mouse Monoclonal Antibody - Images



Western blotting analysis using anti-CWC27 antibody (Cat#AGI2044). Total cell lysates (30 µg) from various cell lines were loaded and separated by SDS-PAGE. The blot was incubated with anti-CWC27 antibody (Cat#AGI2044, 1:2,500) and HRP-conjugated goat anti-mouse secondary antibody respectively.

