

KD-Validated Anti-FANCC Mouse Monoclonal Antibody
Mouse monoclonal antibody
Catalog # AGI2046**Specification**

KD-Validated Anti-FANCC Mouse Monoclonal Antibody - Product Information

Application	WB
Primary Accession	Q00597
Reactivity	Human
Clonality	Monoclonal
Isotype	Mouse IgG1
Calculated MW	Predicted, 63 kDa, observed, 55 kDa kDa
Gene Name	FANCC
Aliases	FANCC; FA Complementmentation Group C; FAC; FACC; FA3; Fanconi Anemia Complementmentation Group C; Fanconi Anemia Group C Protein; Protein FACC
Immunogen	Recombinant protein of human FANCC

KD-Validated Anti-FANCC Mouse Monoclonal Antibody - Additional Information

Gene ID	2176
Other Names	
Fanconi anemia group C protein, Protein FACC, FANCC, FAC, FACC	

KD-Validated Anti-FANCC Mouse Monoclonal Antibody - Protein Information**Name** FANCC**Synonyms** FAC, FACC**Function**

DNA repair protein that may operate in a postreplication repair or a cell cycle checkpoint function. May be implicated in interstrand DNA cross-link repair and in the maintenance of normal chromosome stability. Upon IFNG induction, may facilitate STAT1 activation by recruiting STAT1 to IFNGR1.

Cellular Location

Nucleus. Cytoplasm. Note=The major form is nuclear. The minor form is cytoplasmic

Tissue Location

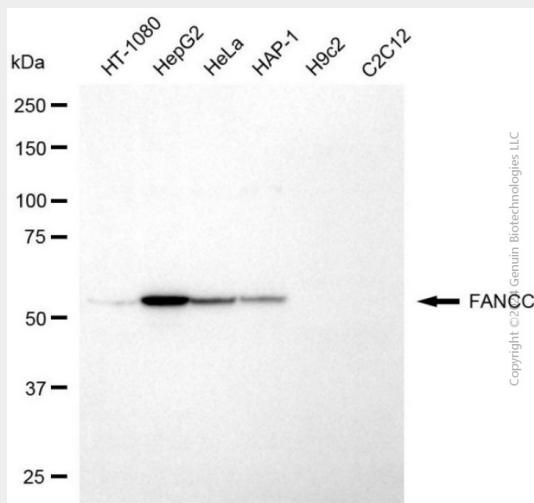
Ubiquitous.

KD-Validated Anti-FANCC Mouse Monoclonal Antibody - Protocols

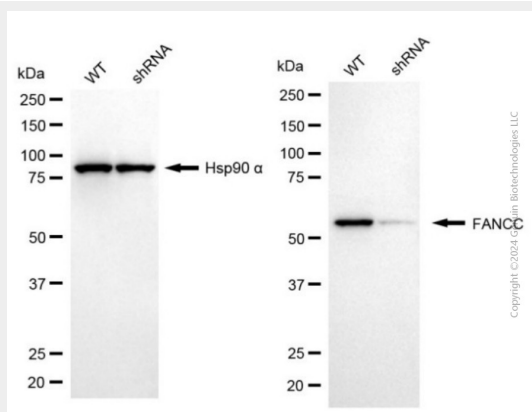
Provided below are standard protocols that you may find useful for product applications.

- [Western Blot](#)
- [Blocking Peptides](#)
- [Dot Blot](#)
- [Immunohistochemistry](#)
- [Immunofluorescence](#)
- [Immunoprecipitation](#)
- [Flow Cytometry](#)
- [Cell Culture](#)

KD-Validated Anti-FANCC Mouse Monoclonal Antibody - Images



Western blotting analysis using anti-FANCC antibody (Cat#AGI2046). Total cell lysates (30 µg) from various cell lines were loaded and separated by SDS-PAGE. The blot was incubated with anti-FANCC antibody (Cat#AGI2046, 1:2,500) and HRP-conjugated goat anti-mouse secondary antibody respectively.



Western blotting analysis using anti-FANCC antibody (Cat#AGI2046). FANCC expression in wild type (WT) and FANCC shRNA knockdown (KD) HeLa cells with 20 µg of total cell lysates. Hsp90 α serves as a loading control. The blot was incubated with anti-FANCC antibody (Cat#AGI2046, 1:2,500) and HRP-conjugated goat anti-mouse secondary antibody respectively.