

**KD-Validated Anti-CDA Rabbit Monoclonal Antibody**  
**Rabbit monoclonal antibody**  
**Catalog # AGI2048****Specification**

---

**KD-Validated Anti-CDA Rabbit Monoclonal Antibody - Product Information**

Application	WB, FC, ICC
Primary Accession	<a href="#">P32320</a>
Reactivity	Human
Clonality	Monoclonal
Isotype	Rabbit IgG
Calculated MW	Predicted, 16 kDa, observed, 16 kDa kDa
Gene Name	CDA
Aliases	CDA; Cytidine Deaminase; CDD; Cytidine Aminohydrolase; Cytosine Nucleoside Deaminase; Small Cytidine Deaminase; EC 3.5.4.5
Immunogen	Recombinant protein of human CDA

**KD-Validated Anti-CDA Rabbit Monoclonal Antibody - Additional Information**

Gene ID	978
<b>Other Names</b>	
Cytidine deaminase, 3.5.4.5, Cytidine aminohydrolase, CDA ( <a href="http://www.genenames.org/cgi-bin/gene_symbol_report?hgnc_id=1712" target="_blank">http://www.genenames.org/cgi-bin/gene_symbol_report?hgnc_id=1712</a> ), CDD	

**KD-Validated Anti-CDA Rabbit Monoclonal Antibody - Protein Information****Name** CDA ([HGNC:1712](#))**Synonyms** CDD**Function**

This enzyme scavenges exogenous and endogenous cytidine and 2'-deoxycytidine for UMP synthesis.

**Tissue Location**

Highly expressed in granulocytes while expression is very low in fibroblasts, chondrocytes, monocytes, and T- as well as B-cell lines

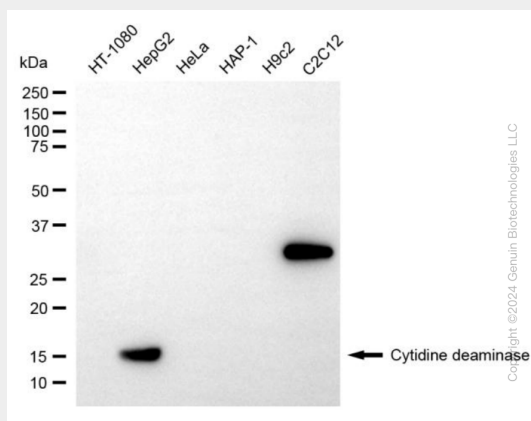
**KD-Validated Anti-CDA Rabbit Monoclonal Antibody - Protocols**

Provided below are standard protocols that you may find useful for product applications.

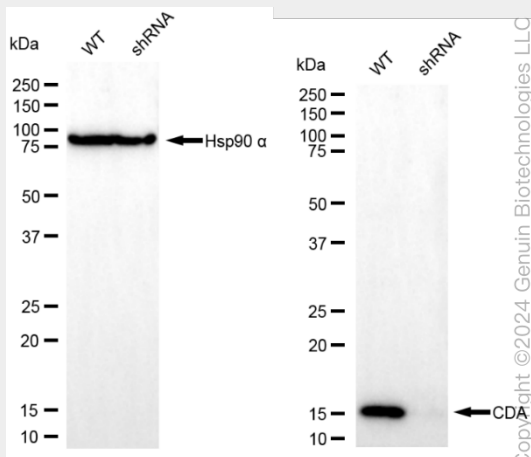
- [Western Blot](#)

- [Blocking Peptides](#)
- [Dot Blot](#)
- [Immunohistochemistry](#)
- [Immunofluorescence](#)
- [Immunoprecipitation](#)
- [Flow Cytometry](#)
- [Cell Culture](#)

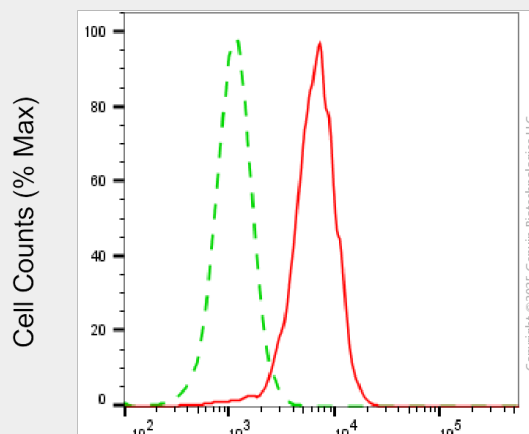
## KD-Validated Anti-CDA Rabbit Monoclonal Antibody - Images



Western blotting analysis using anti-cytidine deaminase antibody (Cat#AGI2048). Total cell lysates (30 µg) from various cell lines were loaded and separated by SDS-PAGE. The blot was incubated with anti-cytidine deaminase antibody (Cat#AGI2048, 1:5,000) and HRP-conjugated goat anti-rabbit secondary antibody respectively.

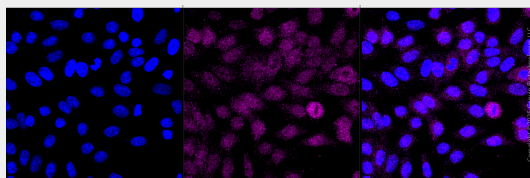


Western blotting analysis using anti-cytidine deaminase antibody (Cat#AGI2048). Cytidine deaminase expression in wild type (WT) and cytidine deaminase (CDA) knockdown (KD) HSHC cells with 20 µg of total cell lysates. Hsp90 α serves as a loading control. The blot was incubated with anti-cytidine deaminase antibody (Cat#AGI2048, 1:5,000) and HRP-conjugated goat anti-rabbit secondary antibody respectively.



Cytidine deaminase-Alexa Fluor® 647

Flow cytometric analysis of Cytidine deaminase expression in HepG2 cells using anti-Cytidine deaminase antibody (Cat#AGI2048, 1:2,000). Green, isotype control; red, Cytidine deaminase.



Immunocytochemical staining of HepG2 cells with anti-Cytidine deaminase antibody (Cat#AGI2048, 1:1,000). Nuclei were stained blue with DAPI; Cytidine deaminase was stained magenta with Alexa Fluor® 647. Images were taken using Leica stellaris 5. Protein abundance based on laser Intensity and smart gain: Medium. Scale bar, 20  $\mu$ m.