

**KD-Validated Anti-GBE1 Mouse Monoclonal Antibody**  
Mouse monoclonal antibody  
Catalog # AGI2056**Specification****KD-Validated Anti-GBE1 Mouse Monoclonal Antibody - Product Information**

Application	WB
Primary Accession	<a href="#">Q04446</a>
Reactivity	Human
Clonality	Monoclonal
Isotype	Mouse IgG1
Calculated MW	Predicted, 80 kDa, observed, 70 kDa kDa
Gene Name	GBE1
Aliases	GBE1; 1,4-Alpha-Glucan Branching Enzyme 1; Glucan (1,4-Alpha-), Branching Enzyme 1; 1,4-Alpha-Glucan-Branched Enzyme; Glycogen Branching Enzyme; Brancher Enzyme; EC 2.4.1.18; Amylo-(1,4 To 1,6) Transglucosidase; Amylo-(1,4 To 1,6) Transglycosylase; Glycogen Storage Disease Type IV; Glycogen-Branched Enzyme; Andersen Disease; APBD; GSD4; GBE
Immunogen	Recombinant protein of human GBE1

**KD-Validated Anti-GBE1 Mouse Monoclonal Antibody - Additional Information**

Gene ID	2632
<b>Other Names</b>	1, 4-alpha-glucan-branching enzyme, 2.4.1.18, Brancher enzyme, Glycogen-branching enzyme, GBE1

**KD-Validated Anti-GBE1 Mouse Monoclonal Antibody - Protein Information****Name** GBE1**Function**

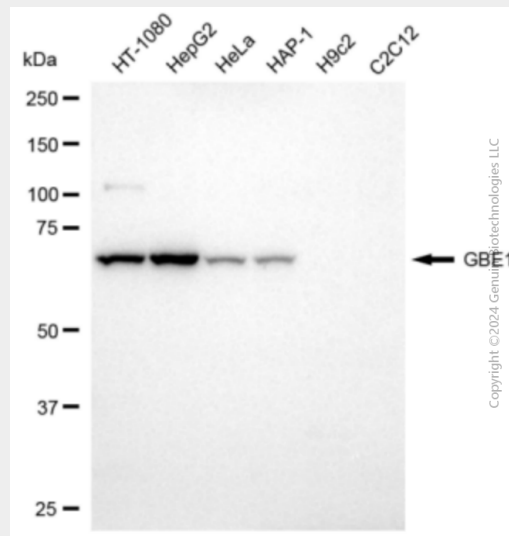
Glycogen-branching enzyme participates in the glycogen biosynthetic process along with glycogenin and glycogen synthase. Generates alpha-1,6-glucosidic branches from alpha-1,4-linked glucose chains, to increase solubility of the glycogen polymer (PubMed:[26199317](http://www.uniprot.org/citations/26199317)), PubMed:[8463281](http://www.uniprot.org/citations/8463281)), PubMed:[8613547](http://www.uniprot.org/citations/8613547)).

**KD-Validated Anti-GBE1 Mouse Monoclonal Antibody - Protocols**

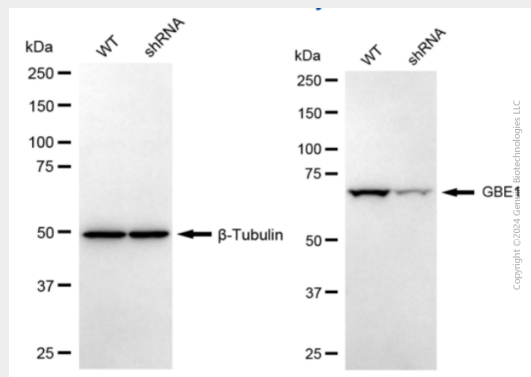
Provided below are standard protocols that you may find useful for product applications.

- [Western Blot](#)
- [Blocking Peptides](#)
- [Dot Blot](#)
- [Immunohistochemistry](#)
- [Immunofluorescence](#)
- [Immunoprecipitation](#)
- [Flow Cytometry](#)
- [Cell Culture](#)

### KD-Validated Anti-GBE1 Mouse Monoclonal Antibody - Images



Western blotting analysis using anti-GBE1 antibody (Cat#AGI2056). Total cell lysates (30 µg) from various cell lines were loaded and separated by SDS-PAGE. The blot was incubated with anti-GBE1 antibody (Cat#AGI2056, 1:2,500) and HRP-conjugated goat anti-mouse secondary antibody respectively.



Western blotting analysis using anti-GBE1 antibody (Cat#AGI2056). GBE1 expression in wild-type (WT) and GBE1 shRNA knockdown (KD) HeLa cells with 20 µg of total cell lysates. β-Tubulin serves as a loading control. The blot was incubated with anti-GBE1 antibody (Cat#AGI2056, 1:2,500) and HRP-conjugated goat anti-mouse secondary antibody respectively.