

**KD-Validated Anti-HIBCH Mouse Monoclonal Antibody**  
**Mouse monoclonal antibody**  
**Catalog # AGI2058****Specification****KD-Validated Anti-HIBCH Mouse Monoclonal Antibody - Product Information**

Application	WB
Primary Accession	<a href="#">Q6NVY1</a>
Reactivity	Rat, Human, Mouse
Clonality	Monoclonal
Isotype	Mouse IgG2a
Calculated MW	Predicted, 43 kDa, observed, 37 kDa kDa
Gene Name	HIBCH
Aliases	HIBCH; 3-Hydroxyisobutyryl-CoA Hydrolase; 3-Hydroxyisobutyryl-Coenzyme A Hydrolase; 3-Hydroxyisobutyryl-CoA Hydrolase, Mitochondrial; HIB-CoA Hydrolase; HIBYL-CoA-H; EC 3.1.2.4; Testicular Tissue Protein Li 86; HIBYLCOAH Recombinant protein of human HIBCH
Immunogen	

**KD-Validated Anti-HIBCH Mouse Monoclonal Antibody - Additional Information**

Gene ID	26275
<b>Other Names</b>	
3-hydroxyisobutyryl-CoA hydrolase, mitochondrial, 3.1.2.4, 3-hydroxyisobutyryl-coenzyme A hydrolase, HIB-CoA hydrolase, HIBYL-CoA-H, HIBCH	

**KD-Validated Anti-HIBCH Mouse Monoclonal Antibody - Protein Information****Name** HIBCH**Function**

Hydrolyzes 3-hydroxyisobutyryl-CoA (HIBYL-CoA), a saline catabolite. Has high activity toward isobutyryl-CoA. Could be an isobutyryl-CoA dehydrogenase that functions in valine catabolism. Also hydrolyzes 3-hydroxypropanoyl-CoA.

**Cellular Location**

Mitochondrion.

**Tissue Location**

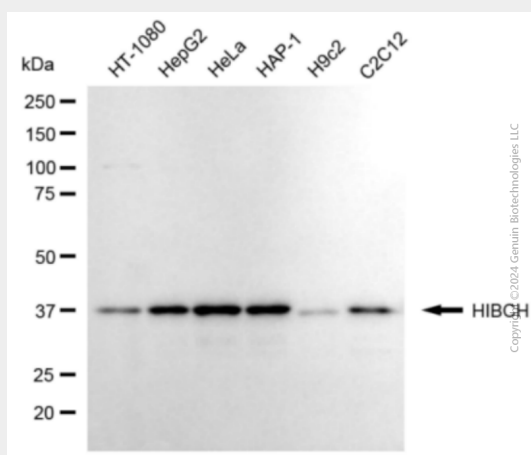
Highly expressed in liver and kidney, also detected in heart, muscle and brain (at protein level).  
Not detected in lung

**KD-Validated Anti-HIBCH Mouse Monoclonal Antibody - Protocols**

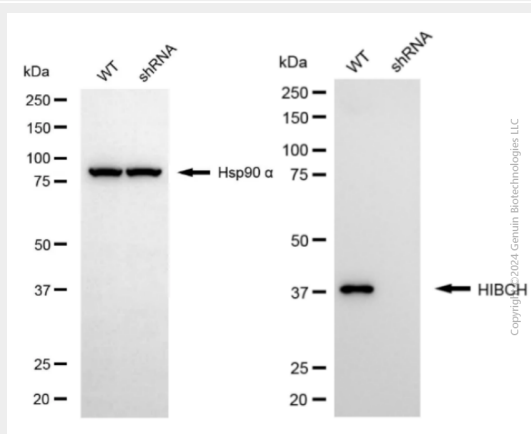
Provided below are standard protocols that you may find useful for product applications.

- [Western Blot](#)
- [Blocking Peptides](#)
- [Dot Blot](#)
- [Immunohistochemistry](#)
- [Immunofluorescence](#)
- [Immunoprecipitation](#)
- [Flow Cytometry](#)
- [Cell Culture](#)

### KD-Validated Anti-HIBCH Mouse Monoclonal Antibody - Images



Western blotting analysis using anti-HIBCH antibody (Cat#AGI2058). Total cell lysates (30 µg) from various cell lines were loaded and separated by SDS-PAGE. The blot was incubated with anti-HIBCH antibody (Cat#AGI2058, 1:2,500) and HRP-conjugated goat anti-mouse secondary antibody respectively.



Western blotting analysis using anti-HIBCH antibody (Cat#AGI2058). HIBCH expression in wild-type (WT) and HIBCH shRNA knockdown (KD) HeLa cells with 20 µg of total cell lysates. Hsp90 α serves as a loading control. The blot was incubated with anti-HIBCH antibody (Cat#AGI2058, 1:2,500) and HRP-conjugated goat anti-mouse secondary antibody respectively.