

KD-Validated Anti-GTP Cyclohydrolase 1 Mouse Monoclonal Antibody
Mouse monoclonal antibody
Catalog # AGI2065**Specification**

KD-Validated Anti-GTP Cyclohydrolase 1 Mouse Monoclonal Antibody - Product Information

Application	WB
Primary Accession	P30793
Reactivity	Human
Clonality	Monoclonal
Isotype	Mouse IgG2a
Calculated MW	Predicted, 28 kDa, observed, 30 kDa kDa
Gene Name	GCH1
Aliases	GCH1; GTP Cyclohydrolase 1; GTP Cyclohydrolase I; GTPCH1; DYT5a; DYT5; GCH; Dystonia 14; EC 3.5.4.16; GTP-CH-I; DYT14; Guanosine 5'-Triphosphate Cyclohydrolase I; Dopa-Responsive Dystonia; GTP-CH-1; HPABH4B
Immunogen	Recombinant protein of human GCH1

KD-Validated Anti-GTP Cyclohydrolase 1 Mouse Monoclonal Antibody - Additional Information

Gene ID	2643
Other Names	
GTP cyclohydrolase 1, 3.5.4.16, GTP cyclohydrolase I, GTP-CH-I, GCH1, DYT5, GCH	

KD-Validated Anti-GTP Cyclohydrolase 1 Mouse Monoclonal Antibody - Protein Information**Name** GCH1**Synonyms** DYT5, GCH**Function**

Positively regulates nitric oxide synthesis in umbilical vein endothelial cells (HUVECs). May be involved in dopamine synthesis. May modify pain sensitivity and persistence. Isoform GCH-1 is the functional enzyme, the potential function of the enzymatically inactive isoforms remains unknown.

Cellular Location

Cytoplasm. Nucleus

Tissue Location

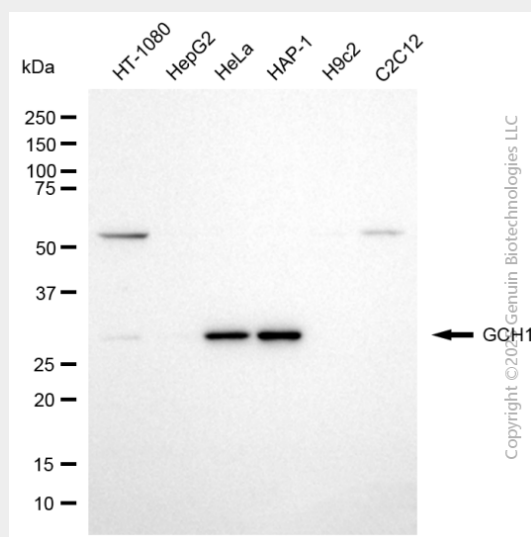
In epidermis, expressed predominantly in basal undifferentiated keratinocytes and in some but not all melanocytes (at protein level).

KD-Validated Anti-GTP Cyclohydrolase 1 Mouse Monoclonal Antibody - Protocols

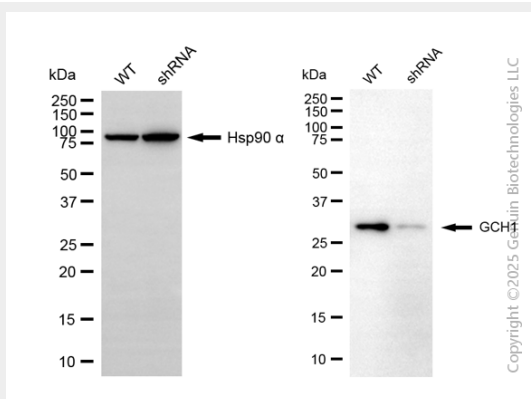
Provided below are standard protocols that you may find useful for product applications.

- [Western Blot](#)
- [Blocking Peptides](#)
- [Dot Blot](#)
- [Immunohistochemistry](#)
- [Immunofluorescence](#)
- [Immunoprecipitation](#)
- [Flow Cytometry](#)
- [Cell Culture](#)

KD-Validated Anti-GTP Cyclohydrolase 1 Mouse Monoclonal Antibody - Images



Western blotting analysis using anti-GCH1 antibody (Cat#AGI2065). Total cell lysates (30 µg) from various cell lines were loaded and separated by SDS-PAGE. The blot was incubated with anti-GCH1 antibody (Cat#AGI2065, 1:2,500) and HRP-conjugated goat anti-mouse secondary antibody respectively.



Western blotting analysis using anti-GCH1 antibody (Cat#AGI2065). GCH1 expression in wild-type (WT) and GCH1 shRNA knockdown (KD) HeLa cells with 30 µg of total cell lysates. Hsp90 α serves as a loading control. The blot was incubated with anti-GCH1 antibody (Cat#AGI2065, 1:2,500) and HRP-conjugated goat anti-mouse secondary antibody respectively.