

KD-Validated Anti-GDI1 Mouse Monoclonal Antibody
Mouse monoclonal antibody
Catalog # AGI2068**Specification**

KD-Validated Anti-GDI1 Mouse Monoclonal Antibody - Product Information

Application	WB
Primary Accession	P31150
Reactivity	Human
Clonality	Monoclonal
Isotype	Mouse IgG1
Calculated MW	Predicted, 51 kDa, observed, 60 kDa kDa
Gene Name	GDI1
Aliases	GDI1; GDP Dissociation Inhibitor 1; RABGDIA; OPHN2; Oligophrenin-2; XAP-4; GDIL; Guanosine Diphosphate Dissociation Inhibitor 1; Rab GDP-Dissociation Inhibitor, Alpha; Rab GDP Dissociation Inhibitor Alpha; Protein XAP-4; Rab GDI Alpha; FLJ41411; MRX41; MRX48; GDI-1; Testis Secretory Sperm-Binding Protein Li 208a; Mental Retardation, X-Linked 41; Mental Retardation, X-Linked 48; RABGD1A; XLID41; XAP4; 1A
Immunogen	Recombinant protein of human GDI1

KD-Validated Anti-GDI1 Mouse Monoclonal Antibody - Additional Information

Gene ID	2664
Other Names	
Rab GDP dissociation inhibitor alpha, Rab GDI alpha, Guanosine diphosphate dissociation inhibitor 1, GDI-1, Oligophrenin-2, Protein XAP-4, GDIL, OPHN2, RABGDIA, XAP4	

KD-Validated Anti-GDI1 Mouse Monoclonal Antibody - Protein Information**Name** GDI1**Synonyms** GDIL, OPHN2, RABGDIA, XAP4**Function**

Regulates the GDP/GTP exchange reaction of most Rab proteins by inhibiting the dissociation of GDP from them, and the subsequent binding of GTP to them. Promotes the dissociation of GDP-bound Rab proteins from the membrane and inhibits their activation. Promotes the dissociation of RAB1A, RAB3A, RAB5A and RAB10 from membranes.

Cellular Location

Cytoplasm. Golgi apparatus, trans-Golgi network

Tissue Location

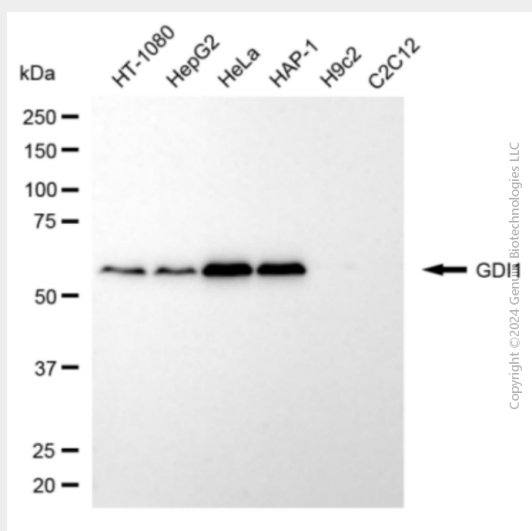
Brain; predominant in neural and sensory tissues.

KD-Validated Anti-GDI1 Mouse Monoclonal Antibody - Protocols

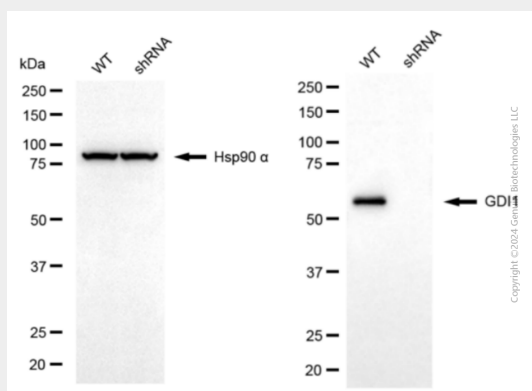
Provided below are standard protocols that you may find useful for product applications.

- [Western Blot](#)
- [Blocking Peptides](#)
- [Dot Blot](#)
- [Immunohistochemistry](#)
- [Immunofluorescence](#)
- [Immunoprecipitation](#)
- [Flow Cytometry](#)
- [Cell Culture](#)

KD-Validated Anti-GDI1 Mouse Monoclonal Antibody - Images



Western blotting analysis using anti-GDI1 antibody (Cat#AGI2068). Total cell lysates (30 µg) from various cell lines were loaded and separated by SDS-PAGE. The blot was incubated with anti-GDI1 antibody (Cat#AGI2068, 1:1,000) and HRP-conjugated goat anti-mouse secondary antibody respectively.



Western blotting analysis using anti-GDI1 antibody (Cat#AGI2068). GDI1 expression in wild-type

(WT) and GDI1 shRNA knockdown (KD) HeLa cells with 20 µg of total cell lysates. Hsp90 α serves as a loading control. The blot was incubated with anti-GDI1 antibody (Cat#AGI2068, 1:1,000) and HRP-conjugated goat anti-mouse secondary antibody respectively.