

**KD-Validated Anti-FUBP3 Mouse Monoclonal Antibody**  
**Mouse monoclonal antibody**  
**Catalog # AGI2070****Specification**

---

**KD-Validated Anti-FUBP3 Mouse Monoclonal Antibody - Product Information**

Application	WB, FC, ICC
Primary Accession	<a href="#">Q96I24</a>
Reactivity	Rat, Human, Mouse
Clonality	Monoclonal
Isotype	Mouse IgG2a
Calculated MW	Predicted, 62 kDa, observed, 62 kDa kDa
Gene Name	FUBP3
Aliases	FUBP3; Far Upstream Element Binding Protein 3; FBP3; Far Upstream Element (FUSE) Binding Protein 3; Far Upstream Element-Binding Protein 3; FUSE-Binding Protein 3
Immunogen	Recombinant protein of human FUBP3

**KD-Validated Anti-FUBP3 Mouse Monoclonal Antibody - Additional Information**

Gene ID	8939
<b>Other Names</b>	
Far upstream element-binding protein 3, FUSE-binding protein 3, FUBP3, FBP3	

**KD-Validated Anti-FUBP3 Mouse Monoclonal Antibody - Protein Information****Name** FUBP3**Synonyms** FBP3**Function**

May interact with single-stranded DNA from the far-upstream element (FUSE). May activate gene expression.

**Cellular Location**

Nucleus.

**Tissue Location**

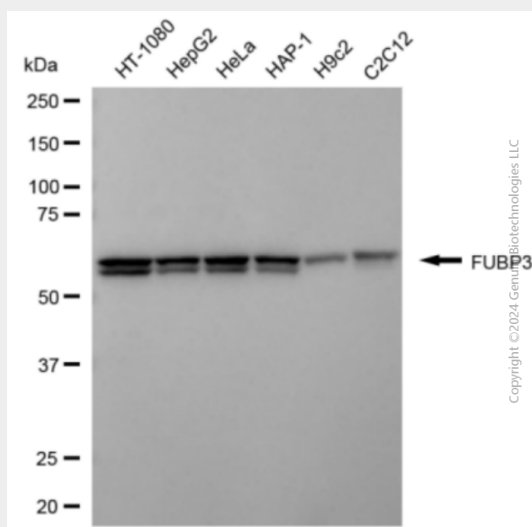
Detected in a number of cell lines.

**KD-Validated Anti-FUBP3 Mouse Monoclonal Antibody - Protocols**

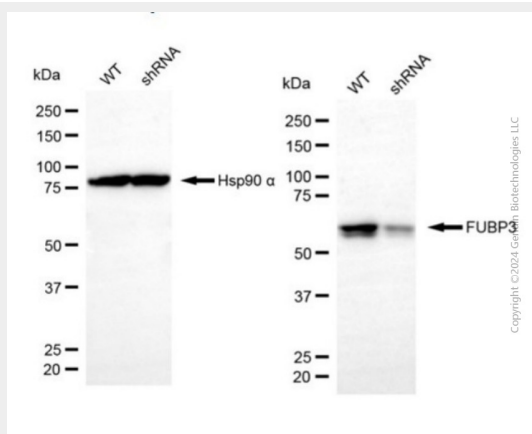
Provided below are standard protocols that you may find useful for product applications.

- [Western Blot](#)
- [Blocking Peptides](#)
- [Dot Blot](#)
- [Immunohistochemistry](#)
- [Immunofluorescence](#)
- [Immunoprecipitation](#)
- [Flow Cytometry](#)
- [Cell Culture](#)

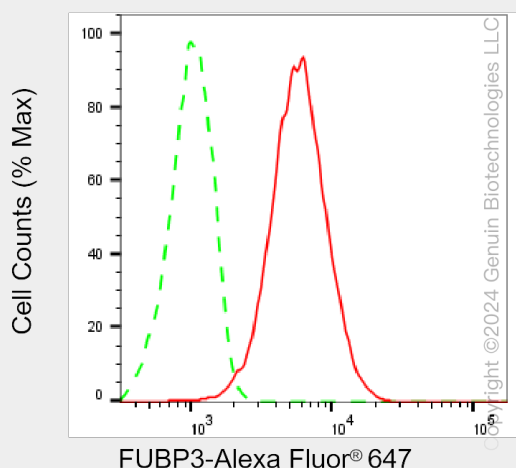
### KD-Validated Anti-FUBP3 Mouse Monoclonal Antibody - Images



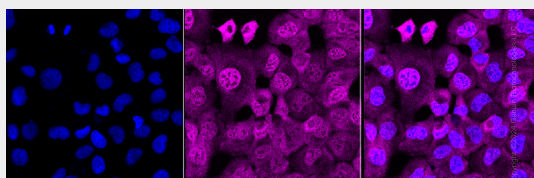
Western blotting analysis using anti-FUBP3 antibody (Cat#AGI2070). Total cell lysates (30 µg) from various cell lines were loaded and separated by SDS-PAGE. The blot was incubated with anti-FUBP3 antibody (Cat#AGI2070, 1:1,000) and HRP-conjugated goat anti-mouse secondary antibody respectively.



Western blotting analysis using anti-FUBP3 antibody (Cat #AGI2070). FUBP3 expression in wild-type (WT) and FUBP3 shRNA knockdown (KD) HeLa cells with 10 µg of total cell lysates. Hsp90 α serves as a loading control. The blot was incubated with anti-FUBP3 antibody (Cat #AGI2070, 1:1,000) and HRP-conjugated goat anti-mouse secondary antibody (Cat #101, 1:20,000) respectively.



Flow cytometric analysis of FUBP3 expression in HT-1080 cells using anti-FUBP3 antibody (Cat#AGI2070, 1:2,000). Green, isotype control; red, FUBP3.



Immunocytochemical staining of HT-1080 cells with anti-FUBP3 associated protein antibody (Cat#AGI2070, 1:1,000). Nuclei were stained blue with DAPI; FUBP3 associated protein was stained magenta with Alexa Fluor® 647. Images were taken using Leica stellaris 5. Protein abundance based on laser Intensity and smart gain: Medium. Scale bar, 20  $\mu$ m.